



Heathfield Park, Willesden Green, NW10  
£2,400 pcm

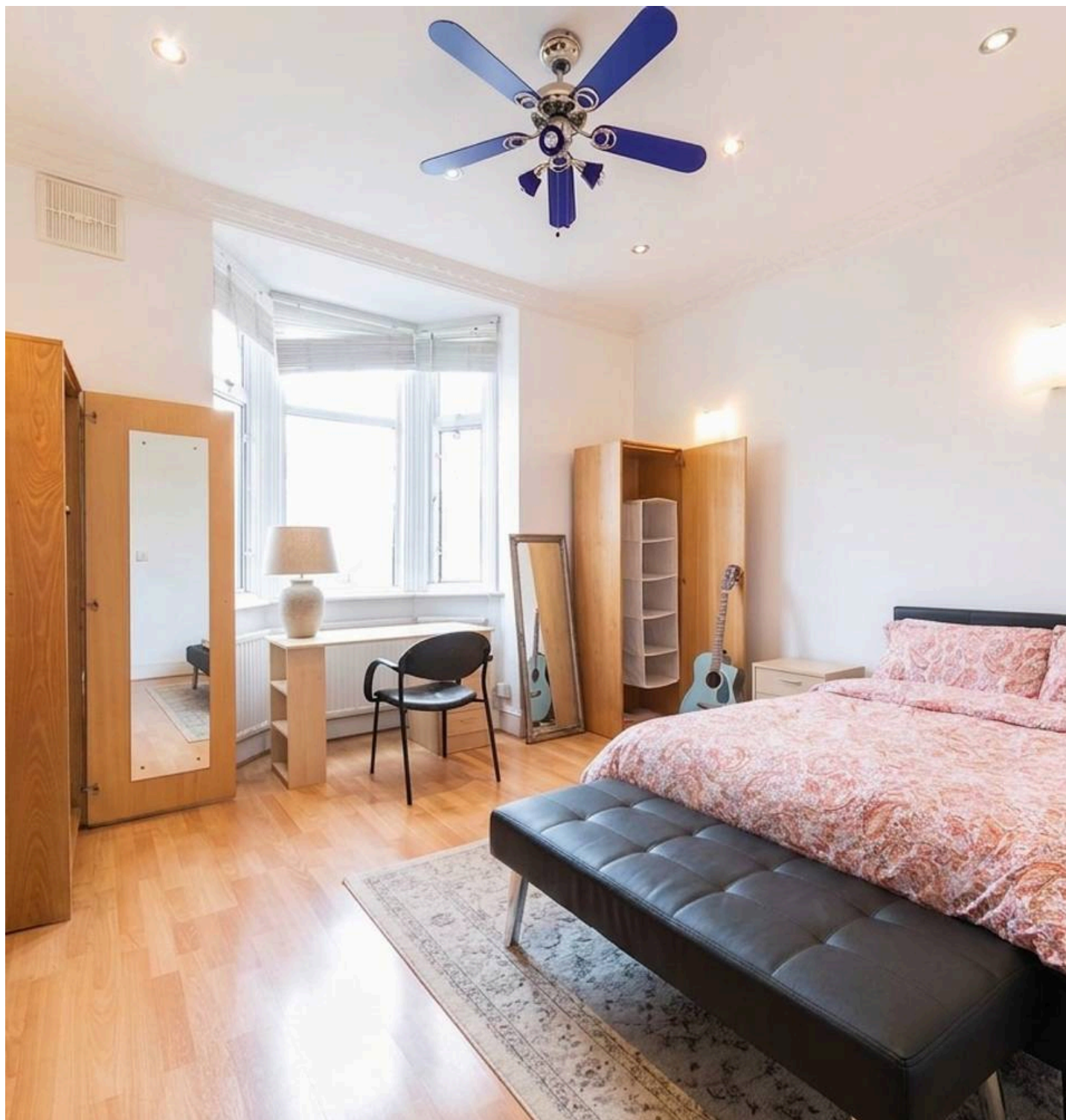
## Heathfield Park, Willesden Green, NW10

Well-presented three-bedroom furnished property located in the desirable Heathfield Park, NW2.

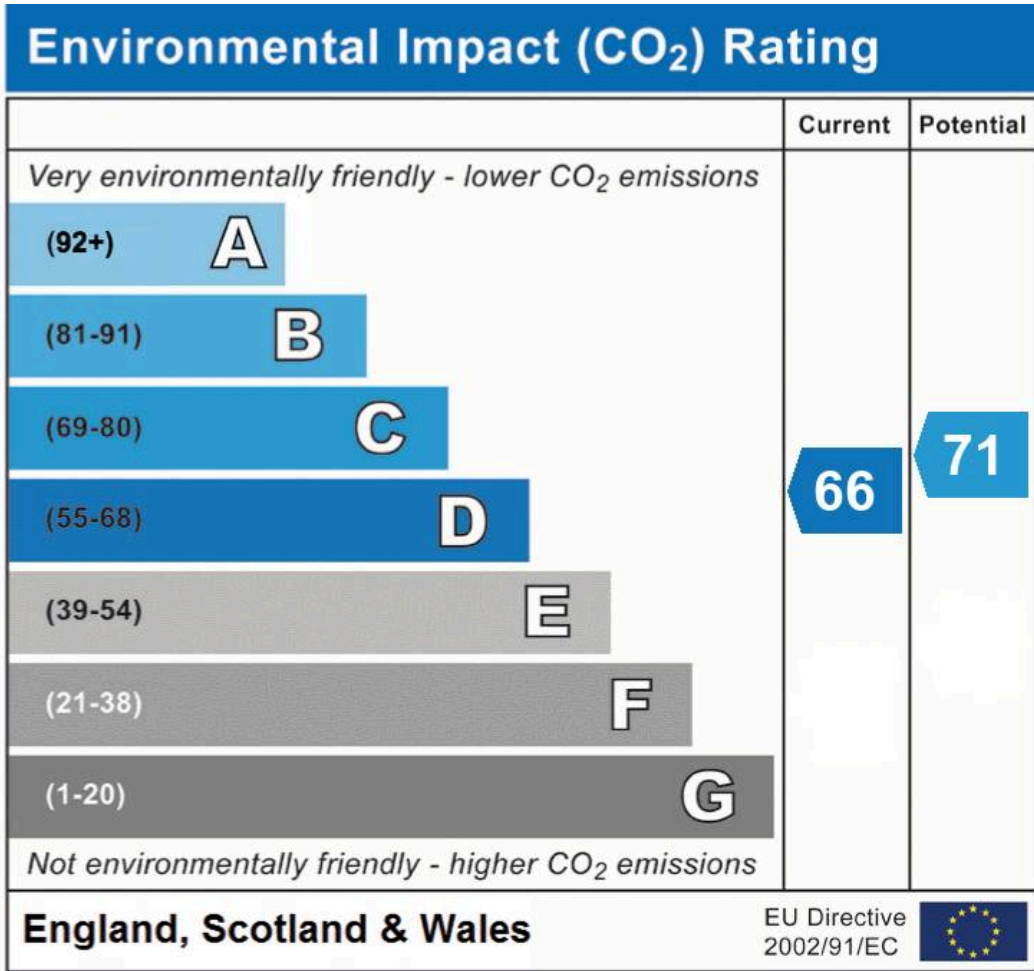
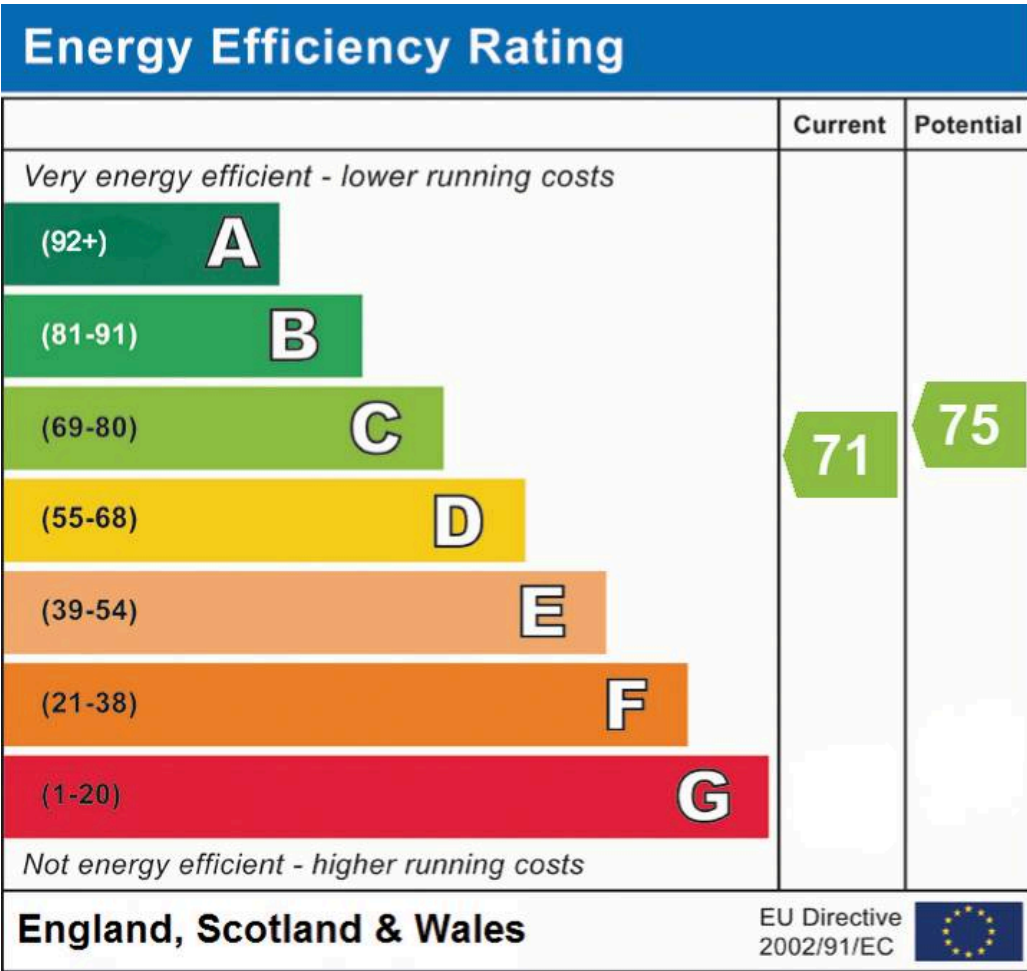
The property comprises three good-sized bedrooms, all offering excellent natural light and ample space for comfortable living. The layout is arranged with no separate lounge, maximising the bedroom accommodation and making it particularly suitable for sharers. There is also a fitted kitchen with good storage and workspace, along with a well-maintained bathroom.

Situated in a quiet residential area, the property benefits from easy access to local amenities, shops, green spaces, and excellent transport links into Central London and surrounding areas.

Available from September and offered furnished, this is a fantastic opportunity to secure a spacious home in a sought-after NW2 location.







## Black Katz

22 West Hampstead Mews, London - NW6 3BB

02073285000 • Thomas@blackkatz.com • blackkatz.com/