


est 1979

 Jeremy
Leaf & Co.



Gainsborough Road, London

Offers Over £275,000

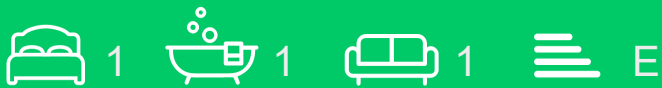
- Open Plan Kitchen / Reception
- Bathroom
- Council Tax Band B
- Long Lease - 150 years
- Chain Free
- One Bedroom
- Off-street Parking
- Service charge - £1,700 p.a
- Within 0.2 Miles of Woodside Park Tube Station
- Newly-redecorated

863 High Road, London, N12 8PT
020 8446 4295

property@jeremyleaf.co.uk
<https://www.jeremyleaf.co.uk/>

Gainsborough Road, London, N12 8AL

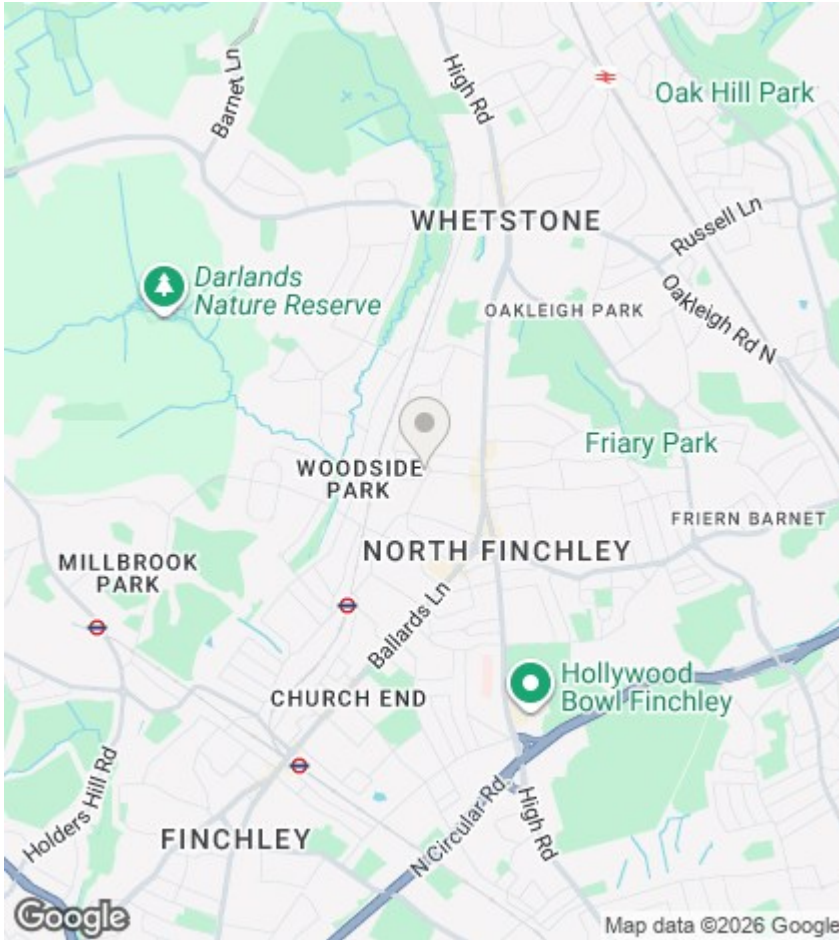
A newly-redecorated one bedroom ground floor flat, conveniently located for North Finchley's shopping and transport amenities and within 0.2 miles of Woodside Park tube station. The property benefits from off-street parking and communal gardens. Ideal for first time buyers or the rental market, offered chain-free with a 150 year lease.



Council Tax Band: B







Directions

Viewings

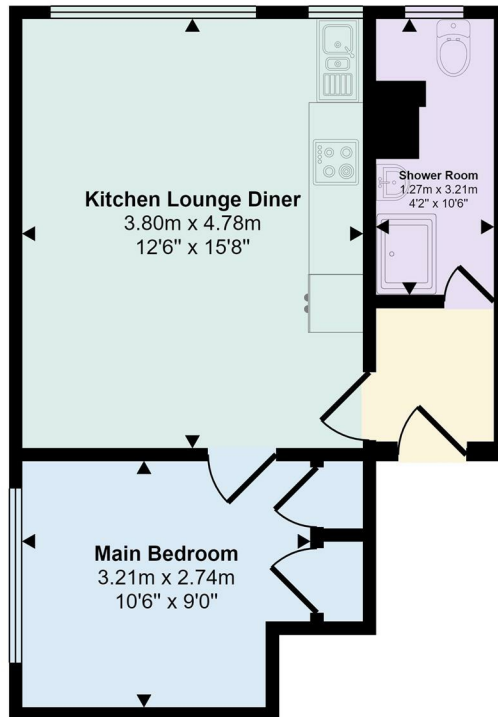
Viewings by arrangement only. Call 020 8446 4295 to make an appointment.

EPC Rating:

E

Energy Efficiency Rating		Current	Potential
Very energy efficient - lower running costs			
(92 plus) A			
(81-91) B			
(69-80) C			79
(55-68) D			
(39-54) E		49	
(21-38) F			
(1-20) G			
Not energy efficient - higher running costs			
England & Wales		EU Directive 2002/91/EC	

35 sq m / 380 sq ft



Floorplan