



 Jan Forster

 Jan Forster

Shield Street | Shieldfield | Newcastle Upon Tyne | NE2 1YA  
Auction Guide £60,000



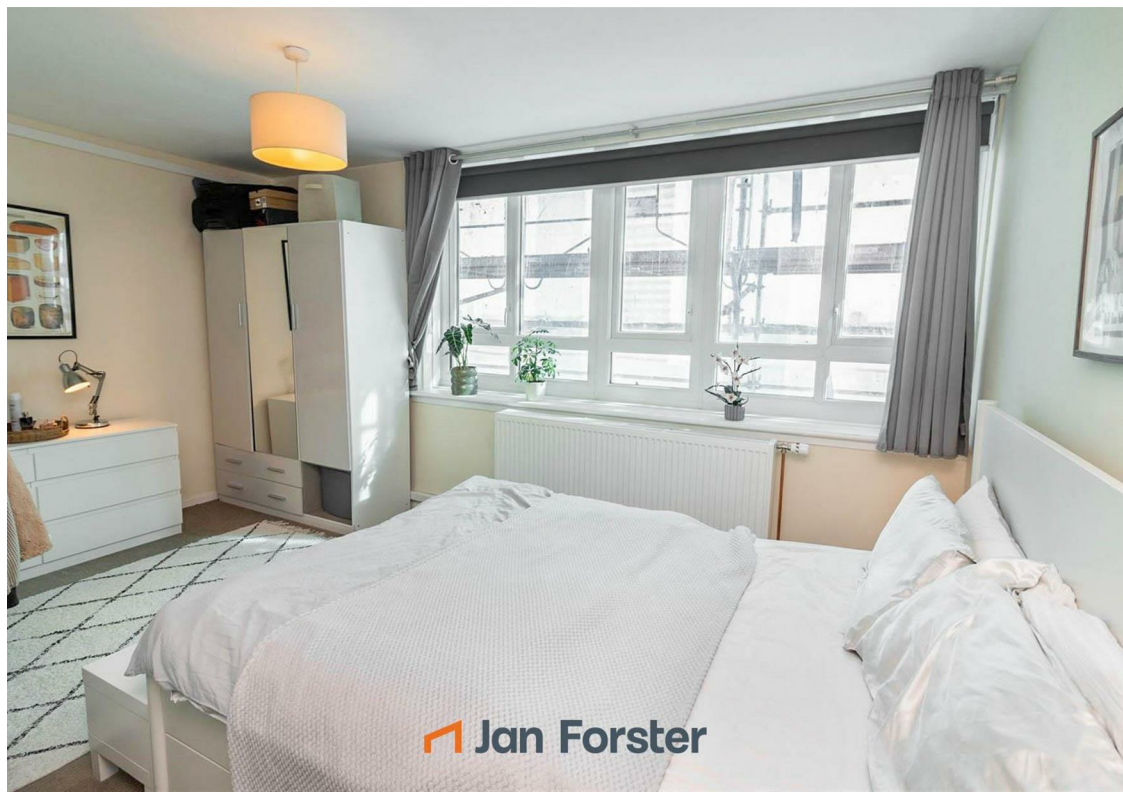
 Jan Forster



- For Sale by Modern Auction
- Subject to Reserve Price
- The Modern Method of Auction
- Close To Town
- Council Tax Band \*A\*
- T & C's Apply
- Buyers Fees Apply
- Secure Entry
- Leasehold
- Call For More Information



 Jan Forster



 Jan Forster



\*\* Video Tour on our YouTube Channel | [https://youtu.be/iIRWXL\\_6R-Q](https://youtu.be/iIRWXL_6R-Q)  
\*\*

For sale by Modern Method of Auction: Starting Bid Price £60,000 plus Reservation Fee

This property is for sale by The Great North Property Auction powered by iam-sold.

Located in the heart of Shieldfield, this two-bedroom sixth-floor apartment offers will make an ideal first time buy. Offered for sale with the benefit of no upper chain.

This property is within just a few minutes' walk to excellent amenities and transport links and perfectly positioned for easy access to the city centre. Both the Manors and Jesmond Metro stations are nearby providing excellent connections to the wider area. With a variety of local shops, cafés, and restaurants in the area, this location offers the perfect balance of convenience and comfort.

The apartment is accessed via a communal entrance with a lift and is made up of an entrance hallway with a closet, living room, kitchen with fitted wall and floor units and integrated oven and hob, two double bedrooms, both with access to the balcony, and there is a modern bathroom WC.

With an intercom and concierge service for added security and convenience, this property is an excellent option for those looking for a modern, hassle-free living experience.

For more information and to book your viewing please call our team on 0191 236 2070.

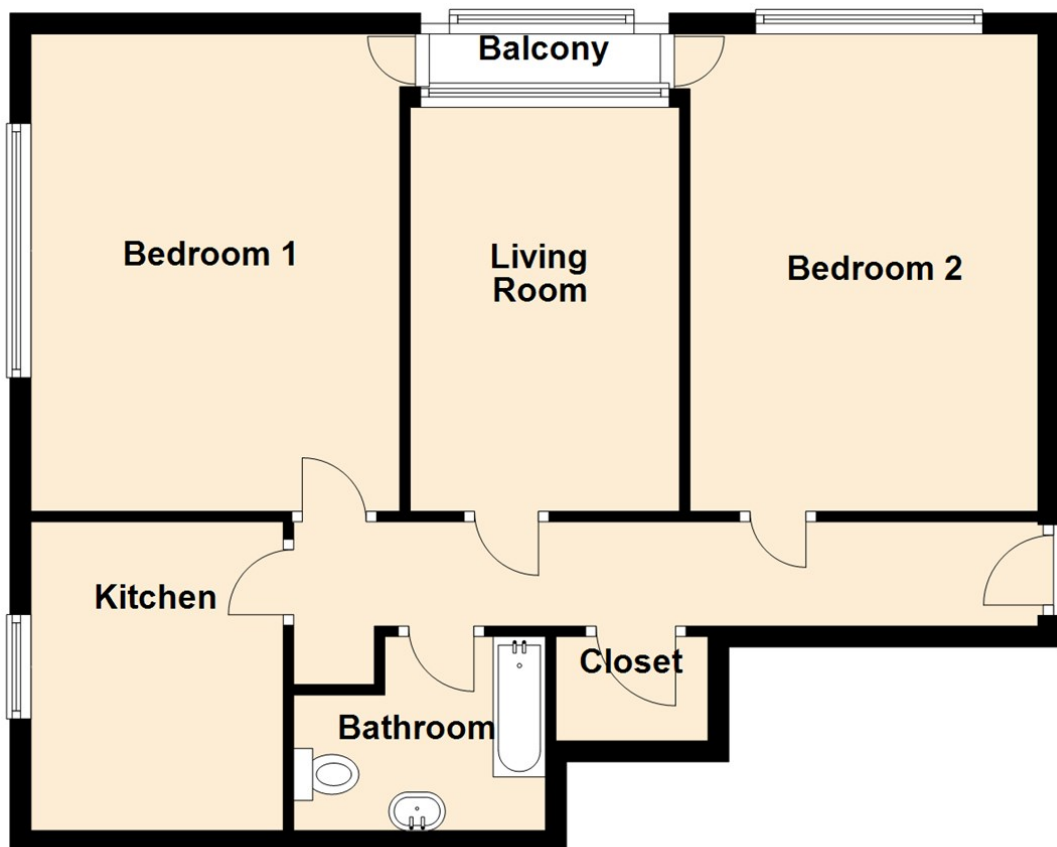
Tenure

The agent understands the property to be leasehold. However, this should be confirmed with a licenced legal representative.

Council Tax band \*A\*.



## Sixth Floor



Lounge 12'1" x 8'5" (3.70 x 2.58)

Kitchen 7'6" x 8'2" (2.30 x 2.50)

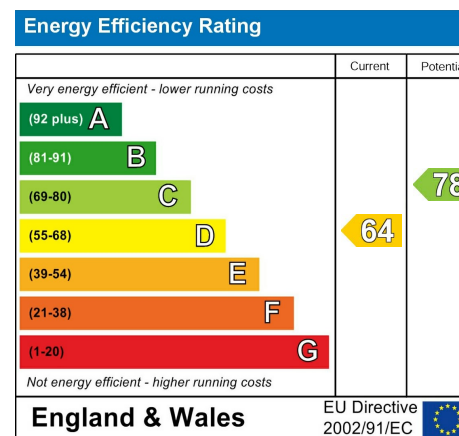
Bedroom One 11'9" x 15'1" (3.60 x 4.60)

Bedroom Two 15'1" x 8'2" (4.60 x 2.50)

Auctioneer's Comments

## The difference between house and home

You may download, store and use the material for your own personal use and research. You may not republish, retransmit, redistribute or otherwise make the material available to any party or make the same available on any website, online service or bulletin board of your own or of any other party or make the same available in hard copy or in any other media without the website owner's express prior written consent. The website owner's copyright must remain on all reproductions of material taken from this website.



Contact Us: 0191 236 2070



[www.janforsterestates.com](http://www.janforsterestates.com)

