



Guide Price
£285,000

Freehold

2x  1x  2x 

**Giddy Horn Lane,
Maidstone, Kent ME16**

Wards
Helping you move forwards



Main features

- Quaint chain free extended cottage
- Off road parking to front
- 2 separate living rooms
- Mature rear garden, perfect for enthusiasts
- Requires updating

Accommodation

GROUND FLOOR

Entrance Porch
 Lounge: 15'5 x 14'0 (4.70m x 4.27m)
 Dining Room: 11'4 x 10'9 (3.46m x 3.28m)
 Kitchen: 11'9 x 8'7 (3.58m x 2.62m)
 Rear Lobby
 Bathroom

FIRST FLOOR

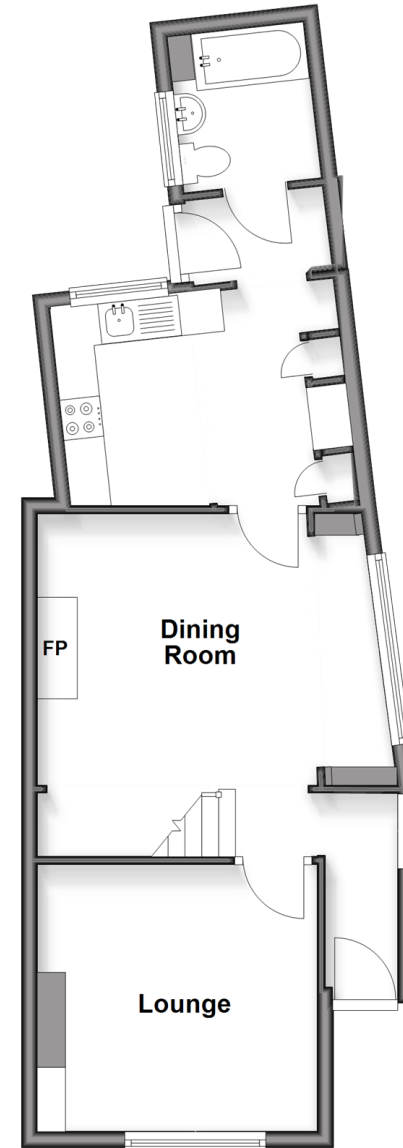
Landing
 Bedroom 1: 11'4 x 10'9 (3.46m x 3.28m)
 Bedroom 2: 11'4 x 10'9 (3.46m x 3.28m)

OUTSIDE

Rear Garden
 Off Road Parking

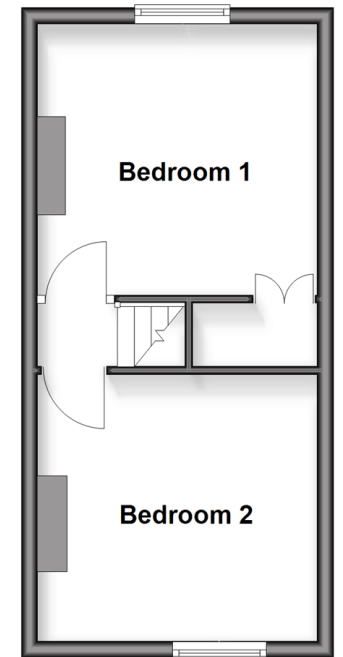
Ground Floor

Approx. 47.0 sq. metres (505.7 sq. feet)



First Floor

Approx. 26.7 sq. metres (287.1 sq. feet)



Call Maidstone - 01622 683737 ■ wardsofkent.co.uk

- Legal advice should be taken to verify fixtures/fittings, planning, alterations and/or lease details
- Appliances & services are untested, dimensions are approximate and floor plans are not to scale



13158740/20260108/CV/DS