



## Cumbrian Gardens, NW2

£900,000

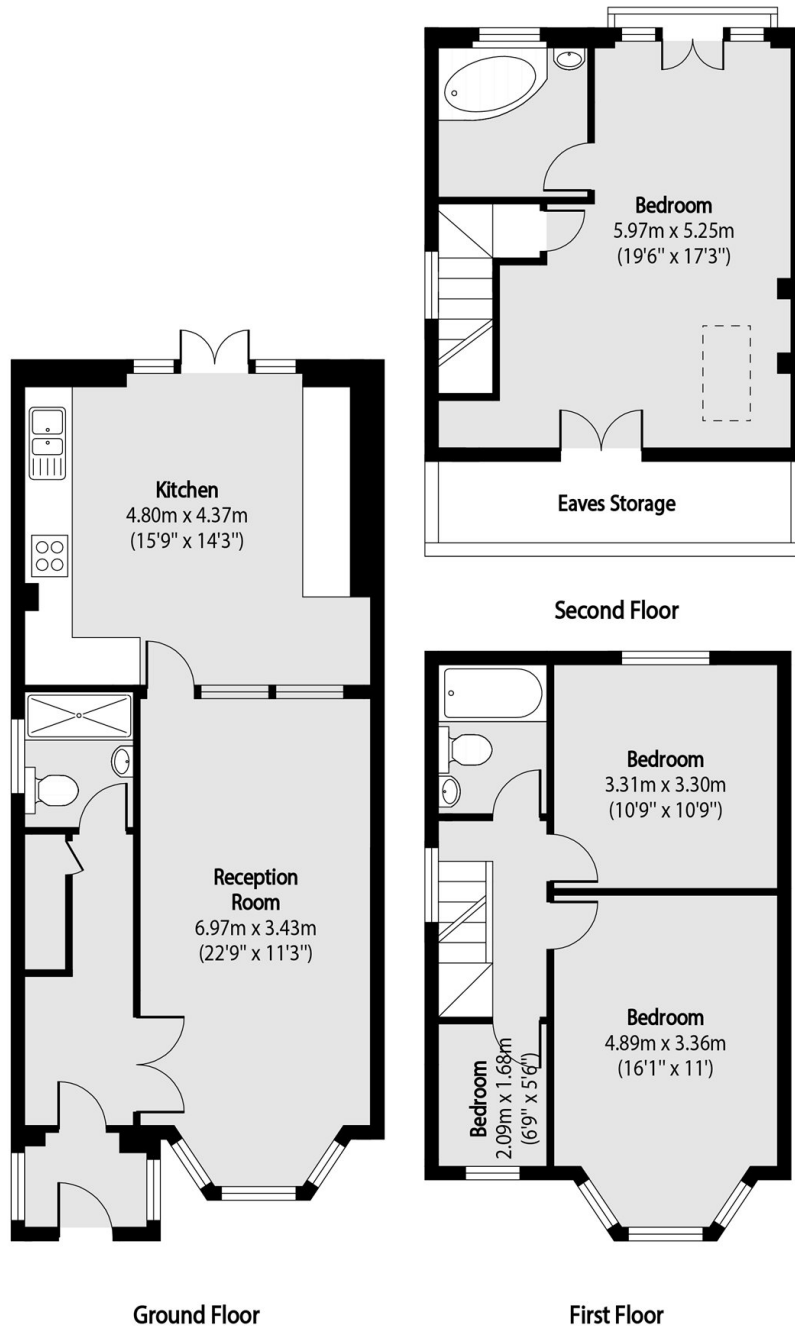
This four bedroom, three bathroom semi detached house is ideally situated in the Golders Green Estate. The house is well presented with off street parking, a private rear garden and offers excellent living space for families.

Cumbrian Gardens is ideally located close to the many amenities and transport links. Golders Green, Hampstead and Finchley are nearby in addition to Brent Cross Shopping Centre and the open spaces of Golders Hill Park and Hampstead Heath.

### Features

- Four Bedrooms
- Three Bathrooms
- Separate Reception
- Integrated Kitchen
- Private Garden
- Off Street Parking

# Cumbrian Gardens, London, NW2



Total area (approx): 129.21 sq m (1391 sq. ft)

Eaves Storage total area (approx): 6.24 sq m (67 sq. ft)