



Chapman Road, Wellingborough NN8 1JN

welcome to

Chapman Road, Wellingborough

This three bedroom, three storey town house is available with no upward chain and would be ideal for any young family's or commuter alike. The main bedroom benefits from an en-suite shower room, there is a family bathroom, two further double bedrooms with built in wardrobes.

Entrance Hall

Entered via double glazed door to the front aspect, stairs rising to first floor landing and radiator.

Cloakroom

Wash hand basin, low level WC and radiator.

Lounge

Double glazed doors leading to rear garden and window to the rear aspect and radiator.

Kitchen/Dining Room

Fitted kitchen comprising wall and base units with worksurfaces over, tiling to splash back areas, stainless steel sink and drainer unit, wall mounted boiler, plumbing for washing machine and double glazed window to the front aspect.

First Floor Landing

Stairs rising from entrance hall, double glazed window to the front aspect, built in airing cupboard, radiator, doors leading to bedroom two and three and bathroom, and stairs rising to second floor landing.

Bedroom Two

Double glazed window to the rear aspect, built in wardrobe and radiator.

Bedroom Three

Double glazed window to the front aspect, built in wardrobe and radiator.

Bathroom

Suite comprising bath with shower over, wash hand basin, low level WC, tiling to splash back areas, radiator and double glazed window to the rear aspect.





Second Floor Landing

Stairs rising from first floor landing and door leading to master bedroom.

Bedroom One

Double glazed window to the front aspect, access to loft space, restricted head height, door leading to en-suite and radiator.

En-Suite

Suite comprising shower, wash hand basin, low level WC, tiling to splash back areas, extractor fan and radiator.



Externally

Front

Tiled patio leading to front door

Rear Garden

Enclosed with fencing, mainly laid to lawn, patio leading to back door and gated access to car park at the rear.

Parking

One allocated parking space



check out more properties at williamhbrown.co.uk



welcome to

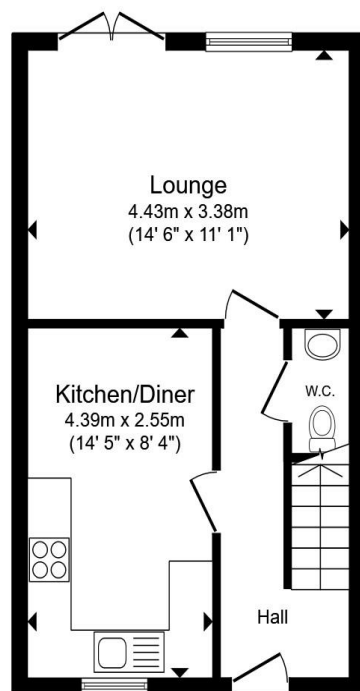
Chapman Road, Wellingborough

- Three bedrooms with en-suite to master bedroom
- Fitted kitchen with oven and hob
- Family bathroom and cloakroom WC
- Allocated parking to the rear
- Close to train station and town centre

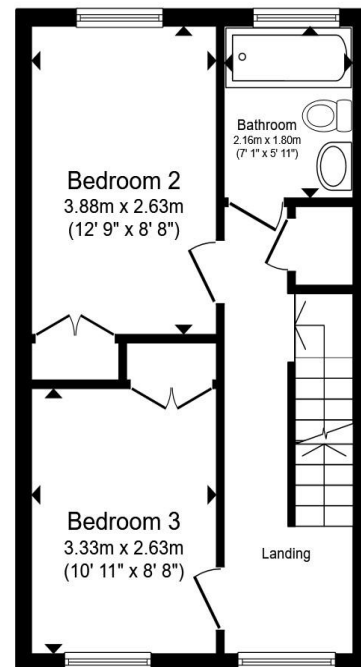
Tenure: Freehold EPC Rating: C

Council Tax Band: C

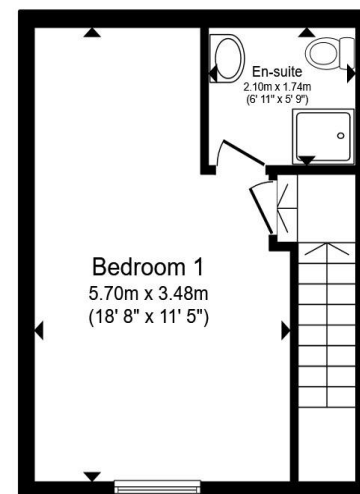
£250,000



Ground Floor



First Floor



Second Floor

Total floor area 95.0 m² (1,022 sq.ft.) approx

This floor plan is for illustrative purposes only. It is not drawn to scale. Any measurements, floor areas (including any total floor area), openings and orientation are approximate. No details are guaranteed, they cannot be relied upon for any purpose and they do not form part of any agreement. No liability is taken for any error, omission or misstatement. A party must rely upon its own inspection(s). Powered by www.propertybox.io



check out more properties at williamhbrown.co.uk



Property Ref:
WBR113690 - 0002

1. MONEY LAUNDERING REGULATIONS Intending purchasers will be asked to produce identification documentation at a later stage and we would ask for your co-operation in order that there is no delay in agreeing the sale. 2. These particulars do not constitute part or all of an offer or contract. 3. The measurements indicated are supplied for guidance only and as such must be considered incorrect. Potential buyers are advised to recheck measurements before committing to any expense. 4. We have not tested any apparatus, equipment, fixtures or services and it is in the buyers interest to check the working condition of any appliances. 5. Where an EPC, or a Home Report (Scotland only) is held for this property, it is available for inspection at the branch by appointment. If you require a printed version of a Home Report, you will need to pay a reasonable production charge reflecting printing and other costs. 6. We are not able to offer an opinion either written or verbal on the content of these reports and this must be obtained from your legal representative. 7. Whilst we take care in preparing these reports, a buyer should ensure that his/her legal representative confirms as soon as possible all matters relating to title including the extent and boundaries of the property and other important matters before exchange of contracts.

William H Brown is a trading name of Sequence (UK) Limited which is registered in England and Wales under company number 4268443, Registered Office is Cumbria House, 16-20 Hockliffe Street, Leighton Buzzard, Bedfordshire, LU7 1GN. VAT Registration Number is 500 2481 05.

Not for marketing purposes INTERNAL USE ONLY



01933 276622



wellingborough@williamhbrown.co.uk



5 Sheep Street, WELLINGBOROUGH,
Northamptonshire, NN8 1BL



williamhbrown.co.uk