



**Ludlow Close, Westbury BA13 3TQ**

**welcome to**

## **Ludlow Close, Westbury**

An extended three-bedroom home on a corner plot, offering an open-plan hall, modern kitchen/breakfast room, dining room, and living room with bi-folds to the garden. Upstairs are three bedrooms and a family bathroom, with a wrap-around garden giving access to allocated parking.

### **Ground Floor**

#### **Entrance Hall**

Open plan style hallway with front entrance door attaching to the kitchen and dining/family room.

#### **Kitchen/ Breakfast Room**

Stylish and modern kitchen/ breakfast with double glazed French doors to the patio, double glazed window to the rear, wall and base units, sink and drainer, vertical radiator, plumbing for washing machine and integrated appliances include: fridge/freezer, double electric oven, induction hob and dishwasher.

#### **Dining Room**

Spacious dining/family room with small and private double glazed window to the front, engineered hard wood flooring, radiator and stairs to the first floor with ample under stair storage and boiler.

#### **Living Room**

Light and airy living room with double glazed bi-fold doors to the rear, double glazed window to the side, TV point with entertainment unit, engineered hard wood flooring and electric fireplace.

### **First Floor**

#### **Landing**

Galleried landing attaching to all first floor areas, offering loft access, double glazed window to the rear and radiator.

#### **Master Bedroom**

Generously sized master bedroom with double glazed window to the rear, built in mirror fronted wardrobes with sliding doors and radiator.

#### **Bedroom Two**

Second double bedroom with sliding door, double glazed window to the front, airing cupboard and radiator.

#### **Bedroom Three**

Final double bedroom with sliding door, double glazed window to the rear and radiator.

#### **Bathroom**

Family bathroom to the rear with double glazed frosted window, luxury 'click vinyl' flooring, WC, wash hand basin, P shaped bath tub with two showers over and heated towel radiator.





### Outside

#### Gardens

A lovely enclosed garden that wraps from the rear to the side of the property, featuring a welcoming patio area perfect for outdoor dining, a well-kept lawn, attractive planting beds, and wood-chipped sections for added interest. A large shed offers great storage or hobby space, and there is convenient access through to the parking area.

#### Parking

Two allocated parking spaces to the rear.



**view this property online** [allenandharris.co.uk/Property/WST107858](https://www.allenandharris.co.uk/Property/WST107858)



welcome to

## Ludlow Close, Westbury

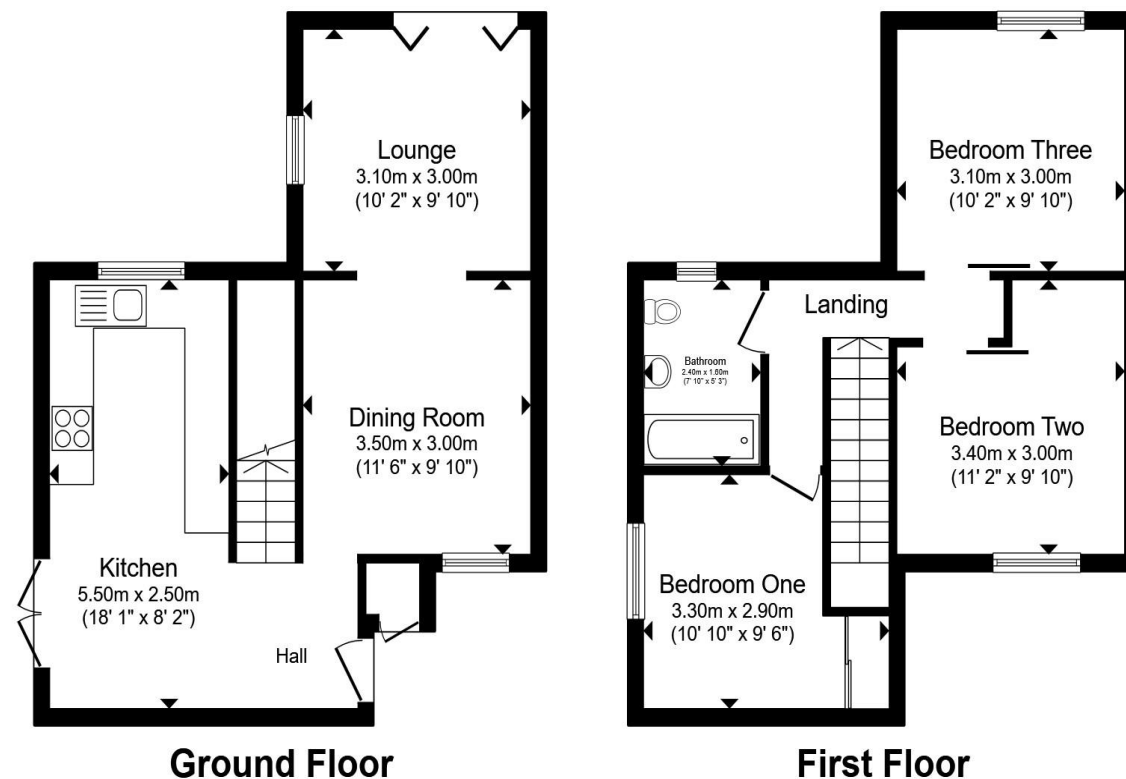
- Stylish Three Bedroom House
- Three Double Bedrooms & Ample Storage Throughout
- Outbuilding With Electric For Multiple Uses
- Side & Rear Garden
- Three Parking Spaces

Tenure: Freehold EPC Rating: D

Council Tax Band: B

offers in the region of

**£275,000**



Total floor area 78.7 m<sup>2</sup> (847 sq.ft.) approx

This floor plan is for illustrative purposes only. It is not drawn to scale. Any measurements, floor areas (including any total floor area), openings and orientation are approximate. No details are guaranteed, they cannot be relied upon for any purpose and they do not form part of any agreement. No liability is taken for any error, omission or misstatement. A party must rely upon its own inspection(s). Powered by [www.propertybox.io](http://www.propertybox.io)

allen & harris

[view this property online](http://allenandharris.co.uk/Property/WST107858) [allenandharris.co.uk/Property/WST107858](http://allenandharris.co.uk/Property/WST107858)



Property Ref:  
WST107858 - 0006

1. MONEY LAUNDERING REGULATIONS Intending purchasers will be asked to produce identification documentation at a later stage and we would ask for your co-operation in order that there is no delay in agreeing the sale. 2. These particulars do not constitute part or all of an offer or contract. 3. The measurements indicated are supplied for guidance only and as such must be considered incorrect. Potential buyers are advised to recheck measurements before committing to any expense. 4. We have not tested any apparatus, equipment, fixtures or services and it is in the buyers interest to check the working condition of any appliances. 5. Where an EPC, or a Home Report (Scotland only) is held for this property, it is available for inspection at the branch by appointment. If you require a printed version of a Home Report, you will need to pay a reasonable production charge reflecting printing and other costs. 6. We are not able to offer an opinion either written or verbal on the content of these reports and this must be obtained from your legal representative. 7. Whilst we take care in preparing these reports, a buyer should ensure that his/her legal representative confirms as soon as possible all matters relating to title including the extent and boundaries of the property and other important matters before exchange of contracts.

Allen & Harris is a trading name of Sequence (UK) Limited which is registered in England and Wales under company number 4268443, Registered Office is Cumbria House, 16-20 Hockliffe Street, Leighton Buzzard, Bedfordshire, LU7 1GN. VAT Registration Number is 500 2481 05.

allen & harris



**01373 822457**



[Westbury@allenandharris.co.uk](mailto:Westbury@allenandharris.co.uk)



15A Warminster Road, WESTBURY, Wiltshire,  
BA13 3PD



[allenandharris.co.uk](http://allenandharris.co.uk)