

## 5 Franklin Place, Fairfield

Offers Over £825,000

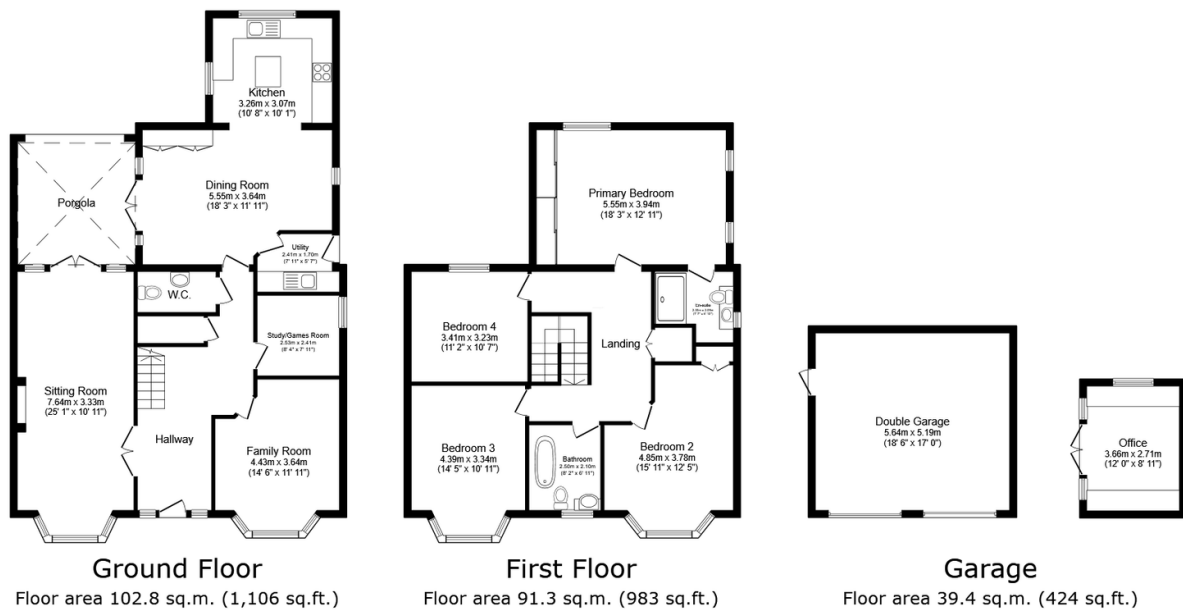
4 2 4



This handsome forever home hits the market chain free, ready for a family to move right in. You'll have lots of space, a modern layout, a good-sized garden and plenty of parking – all on the sought-after Fairfield Park development.

## Key Features

- Handsome forever family home
- Built in 2010, recently updated
- Three separate reception rooms
- Good-sized garden with studio
- Sought-after Fairfield Park
- 2,140sqft, in a modern layout
- Open-plan kitchen/dining/living
- Four double bedrooms, one en suite
- Double garage, four-car driveway
- Ideal commuter location



Total floor area: 233.4 sq.m. (2,513 sq.ft.)

This floor plan is for illustrative purposes only. It is not drawn to scale. Any measurements, floor areas (including any total floor area), openings and orientations are approximate. No details are guaranteed, they cannot be relied upon for any purpose and do not form any part of any agreement. No liability is taken for any error, omission or misstatement. A party must rely upon its own inspection(s). Powered by [www.Propertybox.io](http://www.Propertybox.io)