



## 17 School Street

Great Houghton, Barnsley, S72 0AQ

£185,000



Beautifully presented and full of character, this charming home is offered in move-in ready condition and is situated in the highly sought-after village of Great Houghton, with local amenities, schools and excellent transport links close by.

Boasting an unusually large and deceptively spacious rear garden, the outdoor space is a real feature of the property. The garden offers multiple seating areas, perfect for those who enjoy spending time outdoors, along with a useful workshop located to the rear.

Internally, the property benefits from high ceilings and generously proportioned rooms throughout. The accommodation briefly comprises a welcoming lounge with a multi-fuel burner, dining area, kitchen, two bedrooms and a house bathroom.

This delightful home offers a wonderful blend of character, space and practicality and must be viewed to fully appreciate everything it has to offer.



## GROUND FLOOR

### ENTRANCE HALL

A welcoming entrance hall accessed via a composite entrance door, featuring laminate flooring.

### LOUNGE

A bright front-facing lounge with a double glazed window allowing ample natural light to fill the room. The space benefits from a high ceiling, multi-fuel burner, TV aerial point, and radiator.

### DINING ROOM

A spacious dining room with a rear-facing double glazed window. A door provides access to a useful and generously sized storage cupboard, while a further door leads through to the kitchen. The room also benefits from a radiator.

### KITCHEN

A range of wall and base units with worktop surfaces incorporating a sink unit with mixer tap. There is plumbing for a washing machine, along with space for a cooker and further appliances. The room benefits from a rear-facing double glazed window and a side entrance door.

## FIRST FLOOR

### BEDROOM ONE

A spacious bedroom benefiting from an abundance of natural light. The room also features a spacious storage cupboard and a radiator.

### BEDROOM TWO

A second bedroom offering ample space for all necessary furniture. The room features a rear-facing double glazed window overlooking the rear garden and a radiator.

### BATHROOM

A four-piece suite comprising a shower, bath, WC and wash hand basin. The room also benefits from a window with obscure glazing and a radiator.

## OUTSIDE

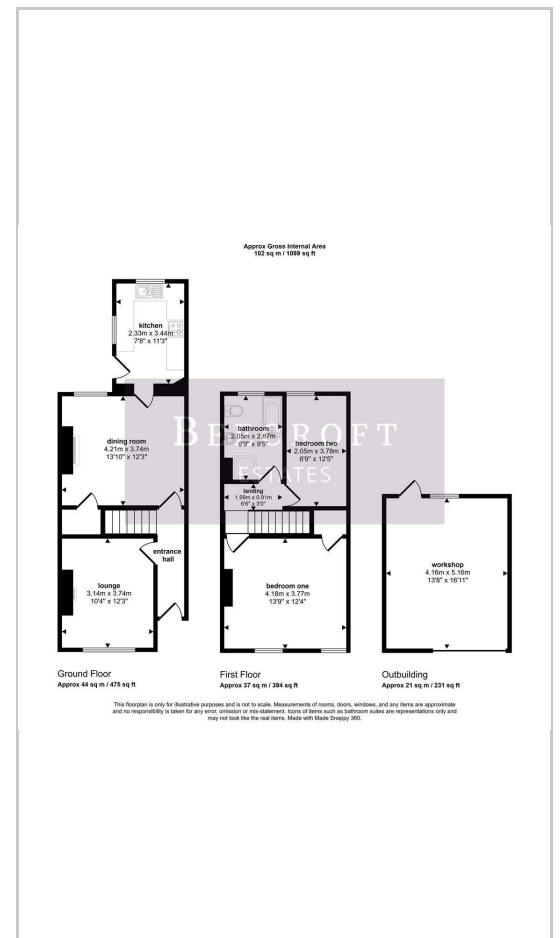
To the front of the property is gated access leading to a small forecourt-style area with steps to the front door and a tiled entrance.

To the rear is a deceptively spacious, beautifully maintained garden, mainly laid to lawn with seating areas, mature trees and shrubs. The garden is private and also benefits from a good-sized workshop space.

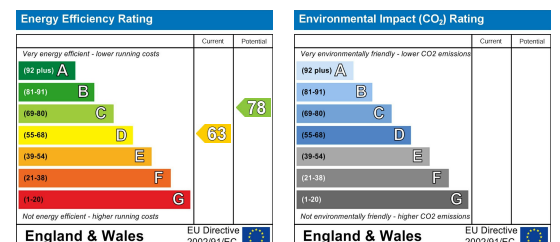
## Area Map



## Floor Plans



## Energy Efficiency Graph



These particulars, whilst believed to be accurate are set out as a general outline only for guidance and do not constitute any part of an offer or contract. Intending purchasers should not rely on them as statements of representation of fact, but must satisfy themselves by inspection or otherwise as to their accuracy. No person in this firm's employment has the authority to make or give any representation or warranty in respect of the property.

Wombwell 6-8 Park Street, Wombwell, S73 0DJ

Tel: 01226 340110 Email: [info@beecroftestates.co.uk](mailto:info@beecroftestates.co.uk) [www.beecroftestates.co.uk](http://www.beecroftestates.co.uk)