



## Lombard Road, SW11

£330,000

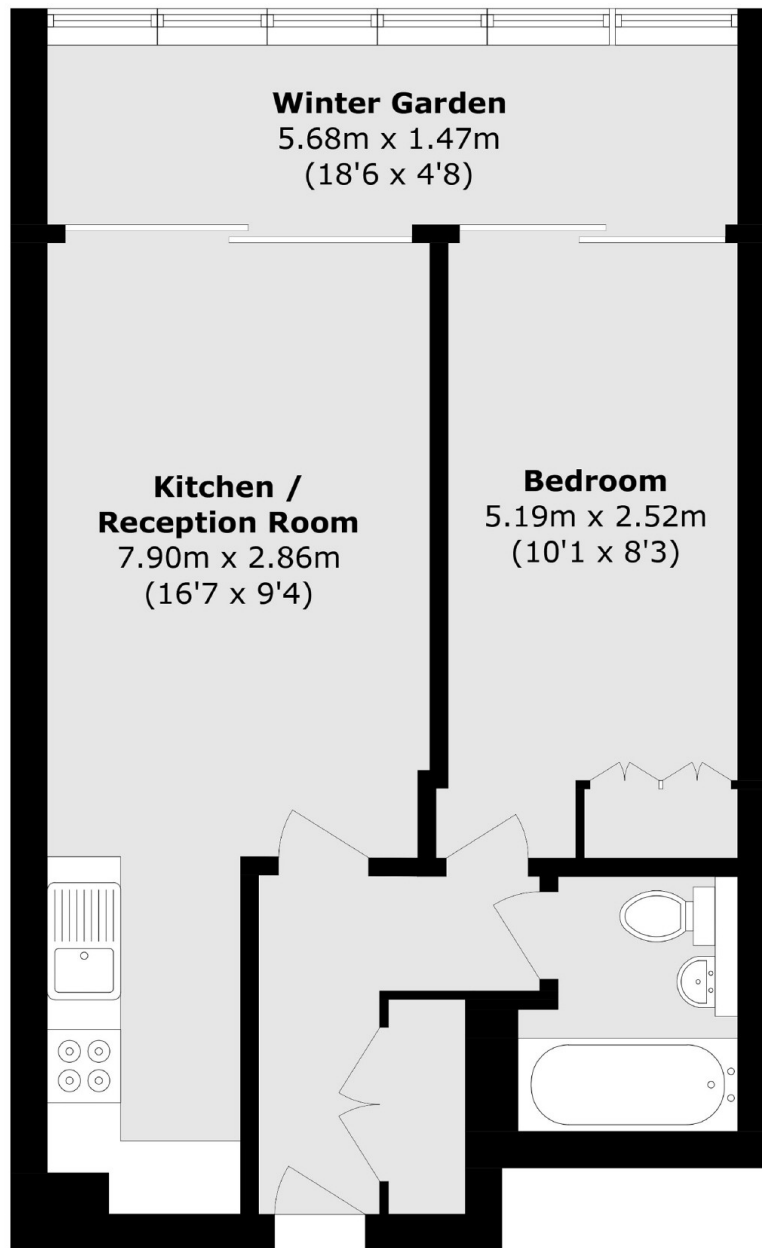
An impressive one double bedroom lateral apartment situated within the sought-after Falcon Wharf development. Comprising an open plan reception/kitchen/dining room, family bathroom, winter garden and ample storage. The property benefits further from a concierge, has parking available to rent via separate negotiation and has a communal roof terrace with amazing views of the river and the London skyline.

The Falcon Wharf development offers high end riverside accommodation and is conveniently located for access North of the River and into Central London. Wandsworth Town station and Clapham Junction are nearby.

### Features

- Open Plan Kitchen/Reception
- Double Bedroom
- Family Bathroom
- Winter Balcony
- Concierge
- Close To Battersea Park

# Lombard Road, London, SW11



Total area (approx.): 54.1 sq. m (582.3 sq. ft)