



**Copper Tree Court, Loose, Maidstone, Kent, ME15 9RW**  
**Price £550,000**



**IMMACULATE FOUR BEDROOM DETACHED FAMILY HOME WITH CONVERTED GARAGE ROOM, PRIVATE GARDEN AND DRIVEWAY IN A SOUGHT-AFTER LOOSE CUL-DE-SAC**

An impressive four bedroom detached family home, presented in immaculate order throughout and occupying a desirable position within the sought-after Copper Tree Court cul-de-sac in Loose. Offering well-balanced and versatile accommodation, this superb home is perfectly suited to modern family lifestyles.

The ground floor features a welcoming entrance hall with a useful cloakroom, a fitted modern kitchen and a separate dining room ideal for both family meals and entertaining. The spacious lounge is a real highlight, opening through to a conservatory which enjoys views over the garden and creates a wonderful additional reception space filled with natural light. The former garage has been thoughtfully converted to provide a highly flexible extra room, perfectly suited as a home office, playroom, snug, gym or even a ground floor bedroom if required.

Upstairs, there are four generously proportioned bedrooms, with built-in wardrobes to bedrooms one, two and three, together with a well-appointed family bathroom.

Externally, the property continues to deliver. To the front, a driveway provides off-road parking for several vehicles. The rear garden has been attractively landscaped to create a private and enjoyable outdoor space ideal for relaxing or entertaining. A useful utility store and separate shed provide valuable additional storage.

The location is particularly appealing, being within easy walking distance of the highly regarded Loose Primary School and offering convenient access to the well-respected Maidstone Grammar Schools. The picturesque Loose Conservation Area is also close by, providing scenic walks, green open spaces and a traditional village pub, all contributing to the strong sense of community and lifestyle appeal that makes Loose such a popular choice with families. Viewing is highly recommended.



**GROUND FLOOR**

Entrance Hall

Downstairs Cloakroom

Lounge 20'2" x 11'5" (6.16m x 3.50m)

Kitchen 10'0" x 9'7" (3.07m x 2.94m)

Dining Room 14'7" x 10'0" (4.45m x 3.05m)

Conservatory 10'9" x 10'6" (3.30m x 3.22m)

Family Room 15'10" x 7'3" (4.85m x 2.23m)

Store/Utility 8'1" x 3'7" (2.48m x 1.10m)

**FIRST FLOOR**

Bedroom 1 11'6" x 11'5" (3.53m x 3.49m)

Bedroom 2 11'6" x 11'1" (3.53m x 3.40m)

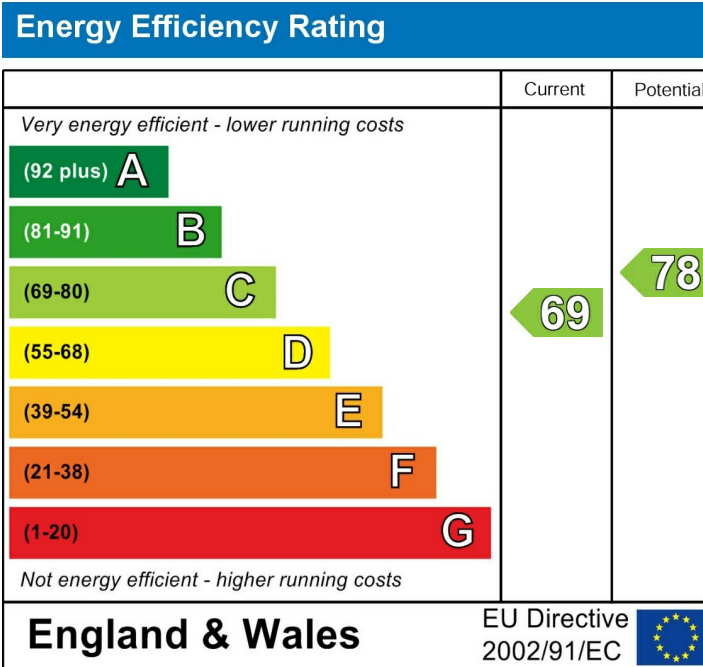
Bedroom 3 8'7" x 8'4" (2.62m x 2.55m)

Bedroom 4 8'5" x 7'0" (2.57m x 2.14m)

Family Bathroom

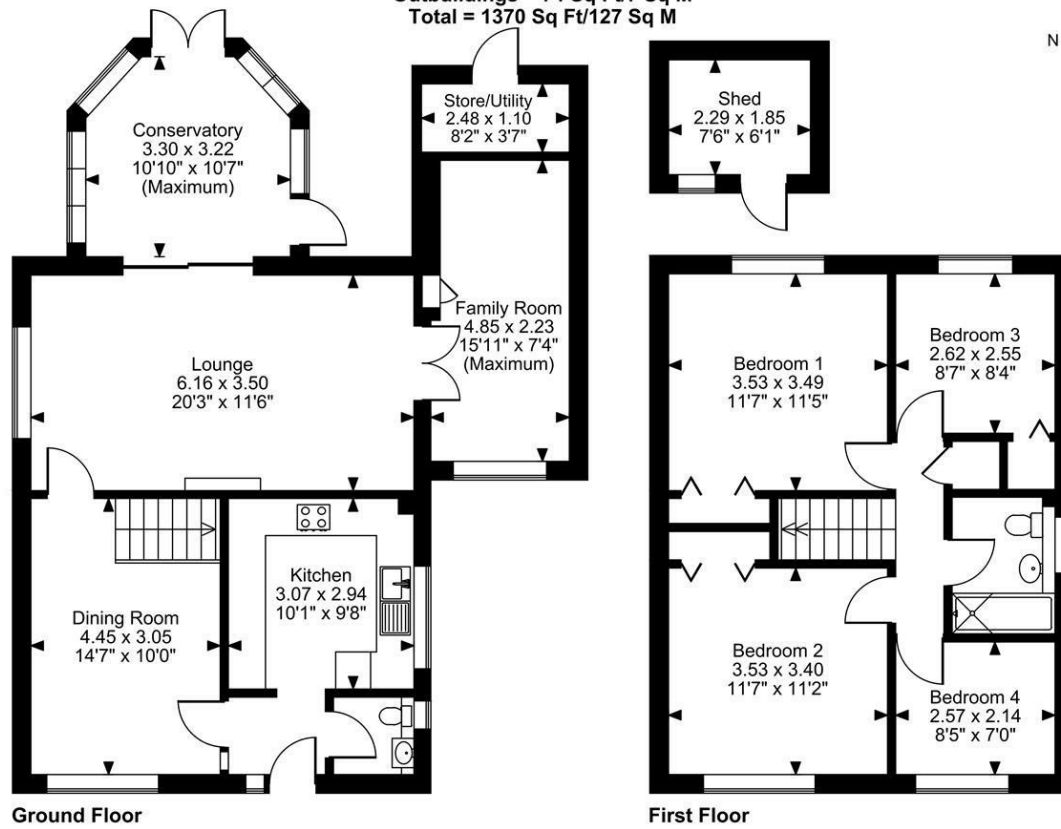
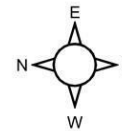
**EXTERNALLY**

Shed 7'6" x 6'0" (2.29m x 1.85m)



Page & Wells limited for themselves and for the vendors of this property whose agents they are give notice that: 1. These particulars do not constitute any part of, an offer or a contract. 2. All statements contained in these particulars as to this property are made without responsibility on the part of Page & Wells Limited or the Vendor. 3. None of the statements contained in these particulars as to the property is to be relied on as statements or representations of fact. 4. Any intending purchaser must satisfy himself by inspection or otherwise as to the correctness of each of the statements contained in these particulars. 5. The vendor does not make or give, and neither Page & Wells Limited nor any person in their employment has any authority to make or give any representation whatsoever in relation to this property. These particulars are supplied on the understanding that all negotiations are carried out throughout Page & Wells Limited. Properties with a reference prefixes EAA are those which Page & Wells Limited disclose an interest in accordance with the provisions of the Estates Agents Act 1979

**Copper Tree Court, Loose, Maidstone**  
**Approximate Gross Internal Area**  
**Main House = 1296 Sq Ft/120 Sq M**  
**Outbuildings = 74 Sq Ft/7 Sq M**  
**Total = 1370 Sq Ft/127 Sq M**



**Ground Floor**

**First Floor**

**FOR ILLUSTRATIVE PURPOSES ONLY - NOT TO SCALE**

The position & size of doors, windows, appliances and other features are approximate only.

© ehouse. Unauthorised reproduction prohibited. Drawing ref. dig/8682076/LCO

