



14 Willow Bank, New Earswick

Offers Over £140,000

14 Willow Bank

New Earswick, York

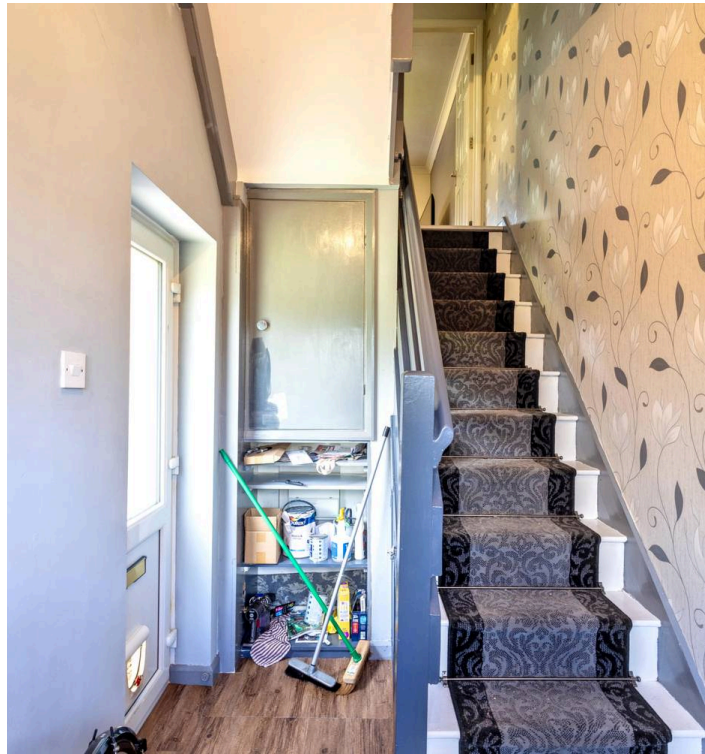
Modern one-bedroom terraced flat in a sought-after area with no upward chain. Features spacious living, integrated kitchen, built-in storage, stylish finishes, off-road parking, and great transport links. Council Tax band: A

Tenure: Leasehold

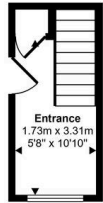
EPC Energy Efficiency Rating: D

EPC Environmental Impact Rating: D

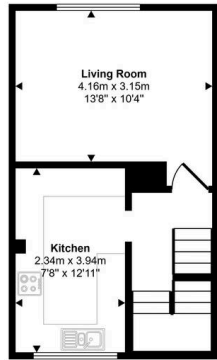
- Off-road parking
- Modern kitchen with integrated appliances
- Spacious living area
- Modern bathroom with shower-bath
- Ample natural light throughout
- Stylish decorative wallpaper and feature wall
- Built-in storage solutions
- Offered with no upward chain
- Perfect FTB property
- Sought After Location



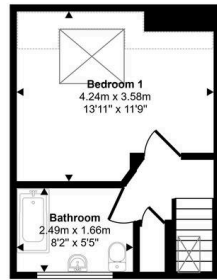
Approx Gross Internal Area
60 sq m / 651 sq ft




Ground Floor
Approx 7 sq m / 74 sq ft



First Floor
Approx 30 sq m / 328 sq ft



Second Floor
Approx 23 sq m / 249 sq ft

 Denotes head height below 1.5m
Whilst every attempt has been made to ensure the accuracy of the floor plan contained here, measurements of doors, windows, rooms and any other items are approximate and no responsibility is taken for any error, omission, or mis-statement. The measurements should not be relied upon for valuation, transaction and/or funding purposes. This plan is for illustrative purposes only and should be used as such by any prospective purchaser or tenant.



Aspire Estates

Aspire Properties, Wira Business Park Ring Road - LS16 6EB

0113 8875079

estatesales@aspirepropertygroup.co.uk

www.aspirepropertygroup.co.uk/