



OVER 60?

Secure this property
for up to **59% less!**

Price
£270,000

Freehold

2x  2x  1x 

**Windward Road,
Rochester, Kent, ME1**

Wards
Helping you move forwards



Main features

- Popular location close to the historic High Street with high speed station
- Ideal first time buy!
- Downstairs shower room and upstairs bathroom
- Catchment area for top performing schools
- No forward chain

Accommodation

GROUND FLOOR

Hallway

Lounge: 13'0 x 12'5 (3.97m x 3.79m)

Kitchen/Diner: 16'3 x 10'2 (4.96m x 3.10m)

Utility Area

Shower Room: 5'10 x 5'9 (1.78m x 1.75m)

FIRST FLOOR

Landing

Bedroom 1: 13'5 x 12'3 (4.09m x 3.74m)

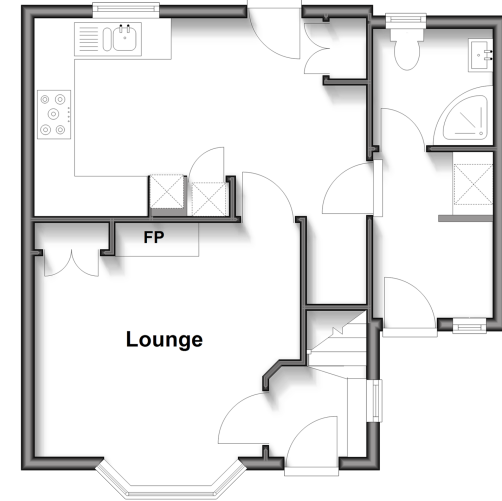
Bedroom 2: 10'3 x 9'11 (3.13m x 3.02m)

Bathroom: 6'2 x 6'1 (1.88m x 1.86m)

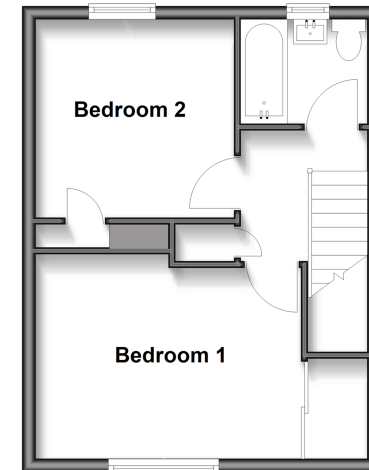
OUTSIDE

Front and Rear Garden

Ground Floor
Approx. 41.1 sq. metres (442.3 sq. feet)



First Floor
Approx. 32.6 sq. metres (351.3 sq. feet)



Call Rochester - 01634 830925 ■ wardsofkent.co.uk

- Legal advice should be taken to verify fixtures/fittings, planning, alterations and/or lease details
- Appliances & services are untested, dimensions are approximate and floor plans are not to scale
- Through a Homewise Home For Life Plan people aged 60+ can secure this property for up to 59% less, by purchasing a Lifetime Lease.



11526512/20250730/DG/SN