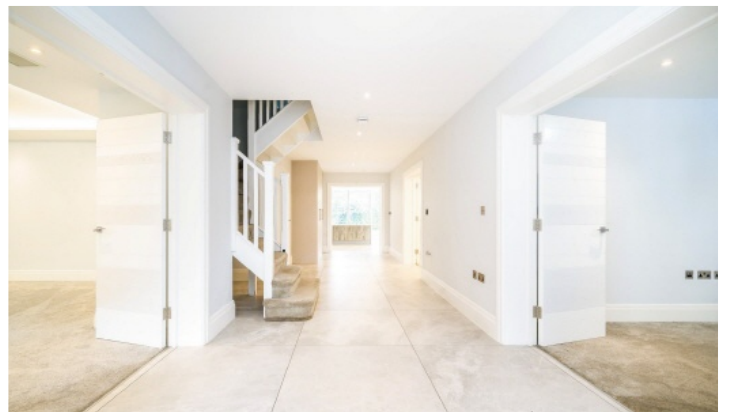


Colin Dean Residential

in partnership with Dexters



The Drive, UB10

£9,000 pcm

This luxurious six bedroom detached family home, offers a remarkable 4,900 sq ft of living space. The property has recently been refurbished throughout and offers the perfect blend of traditional and contemporary features.

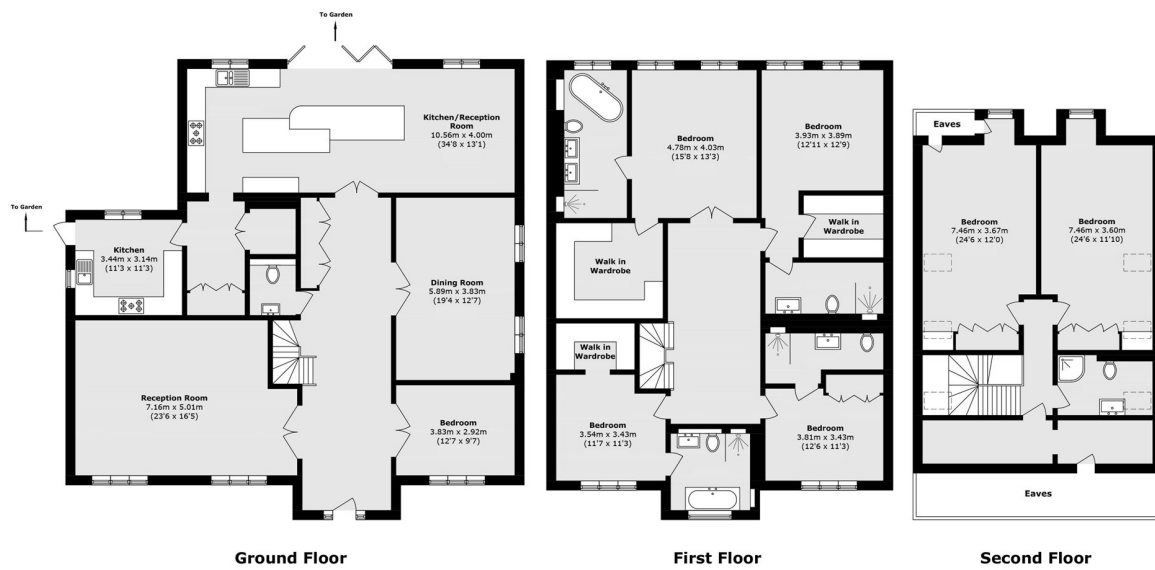
Energy Rating: B.

The property is located on an exclusive, private road, offering both security and tranquility. Conveniently near to local shops, bus stops and renowned schools. Ickenham Underground Station (Metropolitan Line) is just 1.6 Miles Away, providing direct access to the city centre.

- 6 Double Bedrooms • 6 Bathrooms • 3 Reception Rooms •
- Gated Entrance • Modern Interior • Landscaped Garden •

Colin Dean Residential

in partnership with Dexters



Total area (approx.): 391.3 sq. m (4211.9 sq. ft)
(Excluding Eaves)

Colin Dean Residential
350 Pinner Road,
Harrow, HA1 4LB
020 8515 7929
daniel.murray@colindean.com

Energy Rating: B We aim to make our particulars both accurate and reliable. However they are not guaranteed; nor do they form part of an offer or contract. If you require clarification on any points then please contact us, especially if you're travelling some distance to view. Please note that appliances and heating systems have not been tested and therefore no warranties can be given as to their good working order.