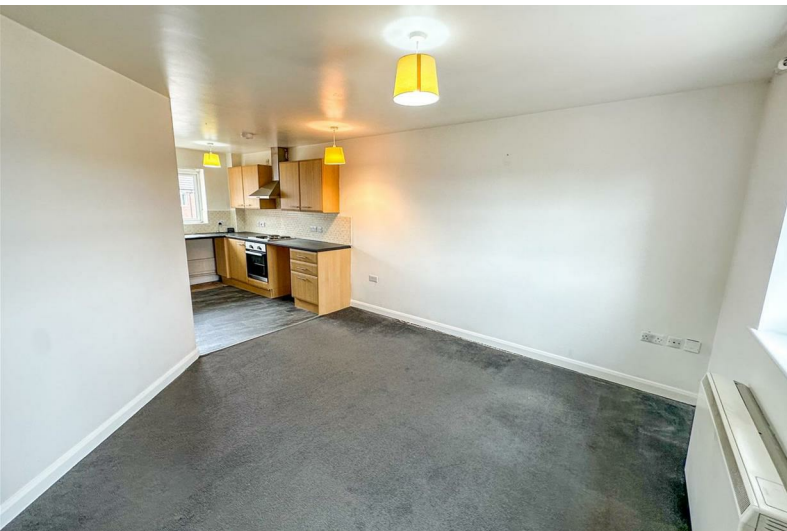




## Exmouth Court

, Corby, NN18 8BF

£125,000



# Exmouth Court

, Corby, NN18 8BF

£125,000



## Entrance Hall

The main door leads to a long hallway with doors leading off to the Lounge, Kitchen, Two double bedrooms and the family bathroom.

## Kitchen/Diner/Lounge.

20'7" x 12'3" max (6.296 x 3.743 max)

The hub of the home, including kitchen with base level and eye level units, sink and drainer, hob, extractor and oven (all electric) plus double glazed window to front elevation.

The lounge/dining area is spacious and light and has a double glazed window to the rear.

## Bedroom One

13'1" x 11'2" max (4.012 x 3.416 max)

Bedroom one is a double room with electric radiator and double glazed window to the rear.

## Bedroom two.

11'0" x 6'11" max (3.356 x 2.112 max)

Bedroom two is a double room with double glazed window to the rear and an electric radiator.

## Family bathroom.

6'8" x 6'4" (2.043 x 1.948)

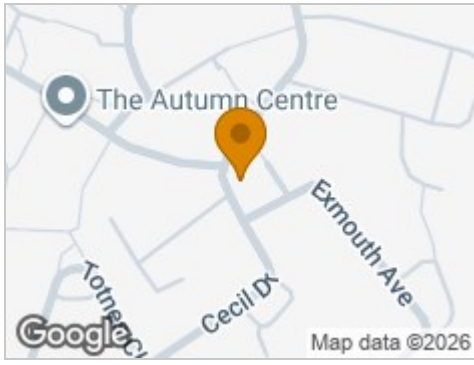
Family bathroom with low level cistern, hand wash basin and bath.

## Outside

To the rear is a communal car park with space for visitors and also one, numbered, allocated space.



### Road Map



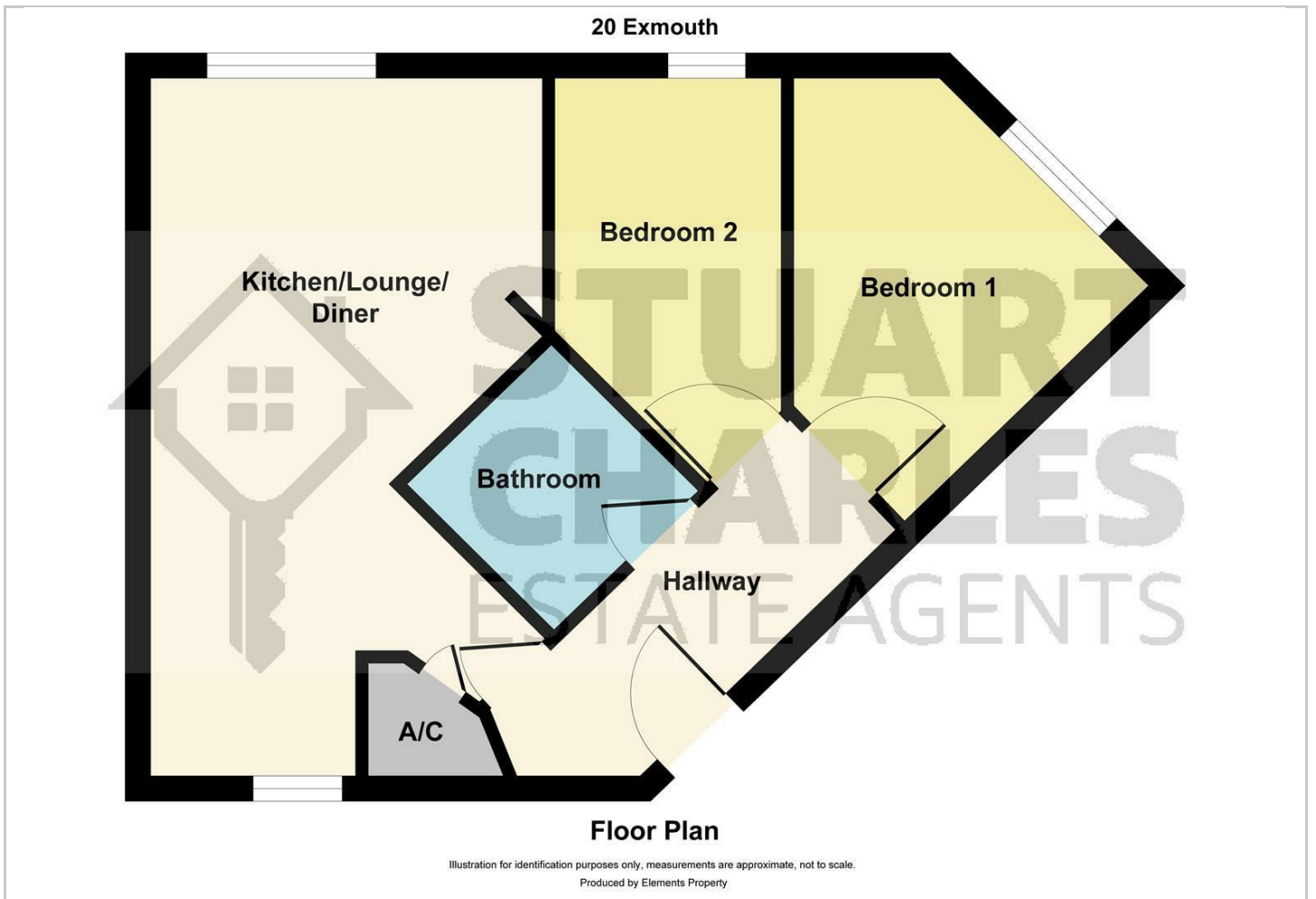
### Hybrid Map



### Terrain Map



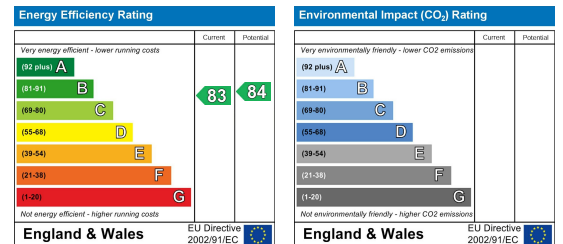
### Floor Plan



### Viewing

Please contact our Stuart Charles Estate Agents Office on 01536 234264 if you wish to arrange a viewing appointment for this property or require further information.

### Energy Efficiency Graph



These particulars, whilst believed to be accurate are set out as a general outline only for guidance and do not constitute any part of an offer or contract. Intending purchasers should not rely on them as statements of representation of fact, but must satisfy themselves by inspection or otherwise as to their accuracy. No person in this firm's employment has the authority to make or give any representation or warranty in respect of the property.