



Victoria Bolt
estate agents POWERED BY **exp** UK

Pennycross Close, Plymouth

Guide Price £310,000

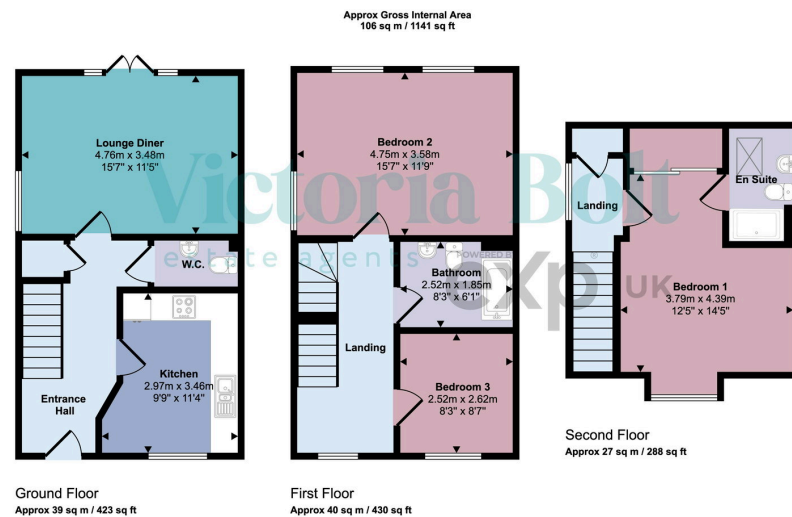
3 3 1



- Three-bedroom townhouse
- Top-floor main bedroom suite
- Bright and generous reception room
- Space for a breakfast table
- Allocated parking and space in front of the house
- Spacious accommodation over three floors
- Ensuite shower room plus family bathroom and downstairs WC
- Modern kitchen with integrated appliances
- Private rear garden
- Convenient location close to schools, amenities and transport links



This spacious three-bedroom townhouse on Pennycross Close, Plymouth, offers flexible family living across three floors, complete with three bathrooms, a private garden, and allocated parking. The property features a generous reception room, a modern kitchen with integrated appliances, and a top-floor main bedroom suite with fitted wardrobes and an ensuite. Conveniently located close to schools, amenities and transport links, this is a fantastic family home in a popular residential area.



This floorplan is only for illustrative purposes and is not to scale. Measurements of rooms, doors, windows, and any items are approximate and no responsibility is taken for any error, omission or mis-statement. Icons of items such as bathroom suites are representations only and may not look like the real items. Made with Made Snappy 360.

