



Tytherton Road, N19

£1,384 Per week

A stunning house set on a quiet residential road close to Tufnell Park Station. Spread over three floors the property boasts a large kitchen, double reception, four spacious bedrooms, private garden and two bathrooms.

Tytherton Road is one of Tufnell Parks prime locations for families being close to the green spaces of Hampstead Heath and Tufnell Park playing fields with an excellent range of gastro-pubs, local restaurants and cafes all within easy reach.

Features

- Four Bedrooms
- Double Reception
- Private Garden
- Great Location
- Two Bathrooms
- Unfurnished



Tytherton Road, N19

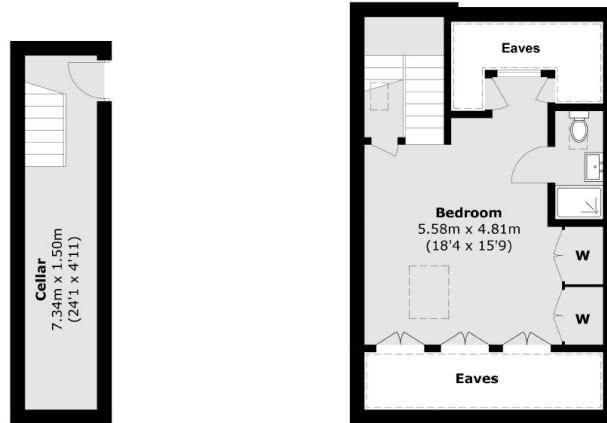
On the ground floor is a spacious double reception room with high-ceilings and a bay window, and to the rear of the property is a large galley kitchen with a large dining area with views of the garden.

The kitchen leads directly to a mature, private garden and has the potential for a side return, subject to planning permissions. On the first floor, you have three bedrooms and a large bathroom. The second floor hosts a large double bedroom and another bathroom.

This property also has a large attic space, ideal for storage, feature fireplaces, character throughout and is in the Yerbury School catchment area.



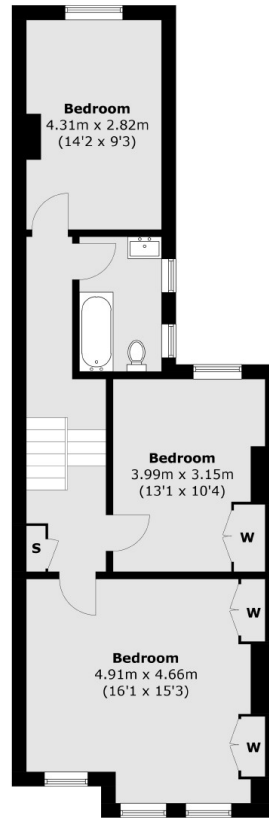
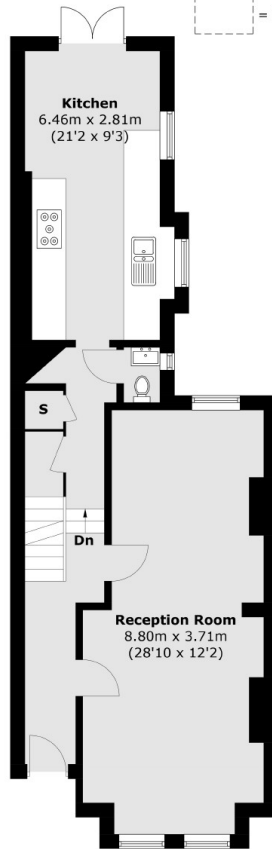
Tytherton Road, London, N19



Lower Ground Floor

Second Floor

= Reduced headroom below 1.5m / 5'0"



Ground Floor

First Floor

Total area (approx.): 164.8 sq. m (1,773.7 sq. ft)
(Including Cellar / Excluding Eaves)