



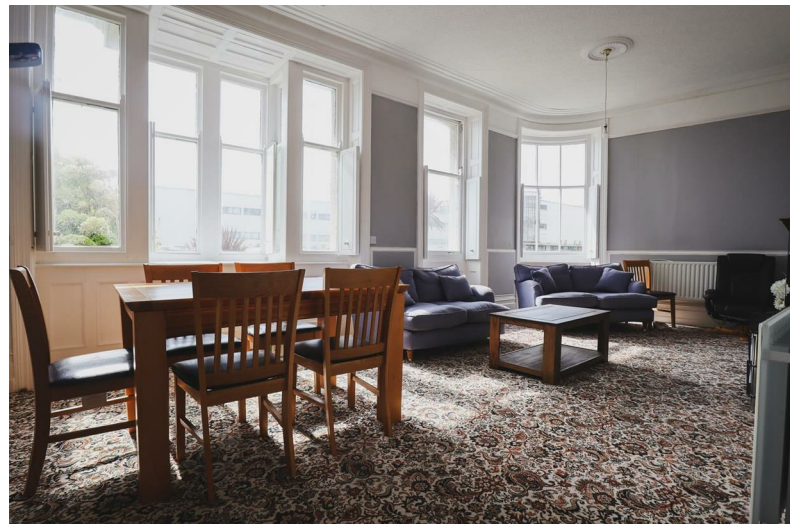
Albany Mansions Marina

, Bexhill-On-Sea, TN40 1BU

Offers Over £240,000



Albany Mansions Marina



Description

Spacious 2-Bedroom Ground Floor Apartment – Central Bexhill-on-Sea

This very spacious and bright ground floor flat offers the proportions and feel of a house thanks to its high ceilings, large entrance hall and generously sized living areas.

Ideally located, it couldn't be more convenient for the seafront, shops, and local amenities, with the De La Warr Pavilion and promenade just a short stroll away.

The lounge is a standout feature, boasting south-facing shuttered windows that flood the room with natural light. The kitchen is unusually large for a two-bedroom period property with excellent scope to create a separate utility room or add ample storage. Off the entrance hall, a long corridor leads to two well-sized bedrooms and a modern bathroom.

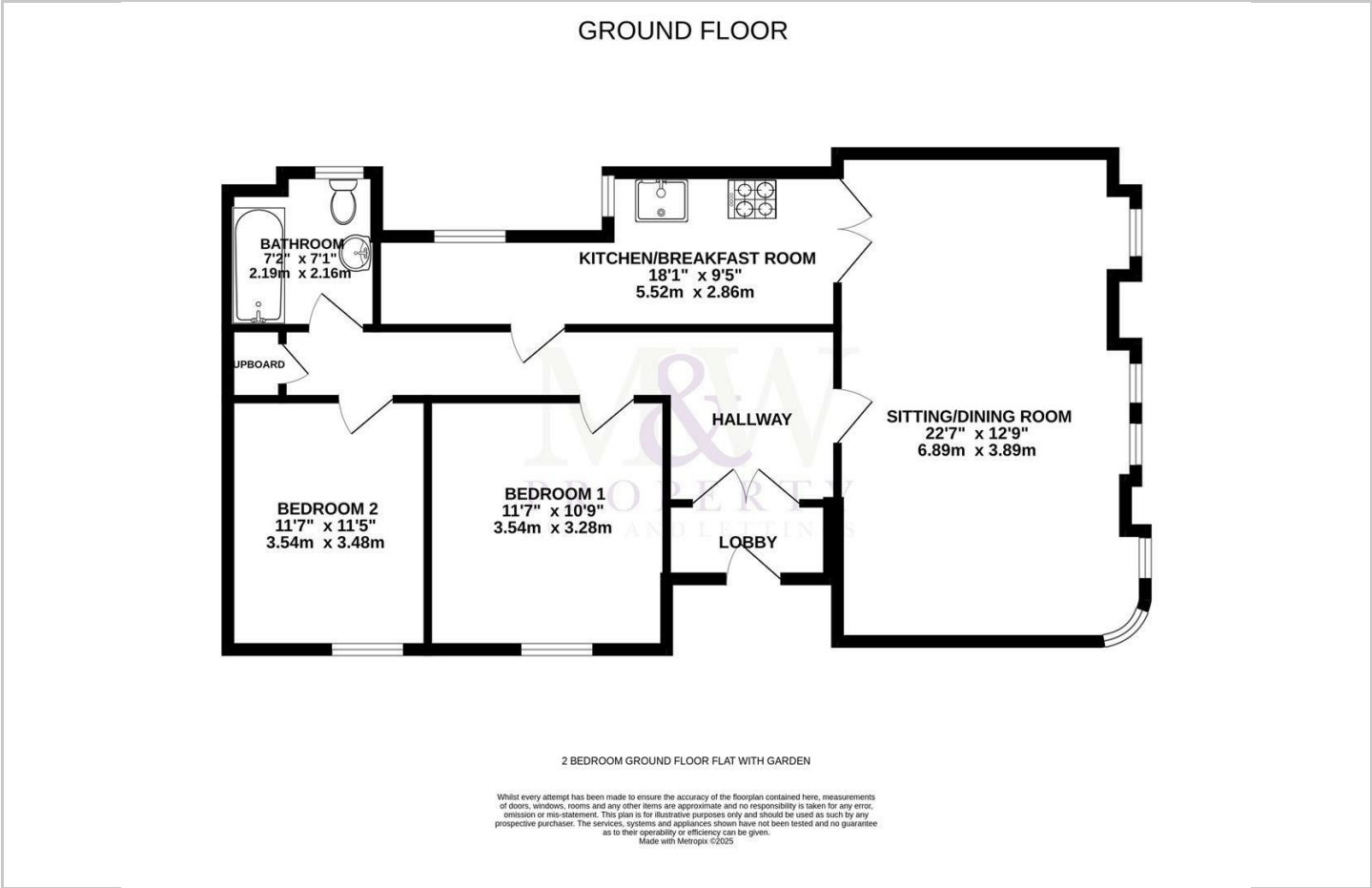
Outside, the property is surrounded by both a front garden area and a small private courtyard to the rear.

- Spacious, 2 bedroom ground floor flat
- Garden flat
- Private entrance and grand hall
- 950 year lease remaining
- Seafront apartment

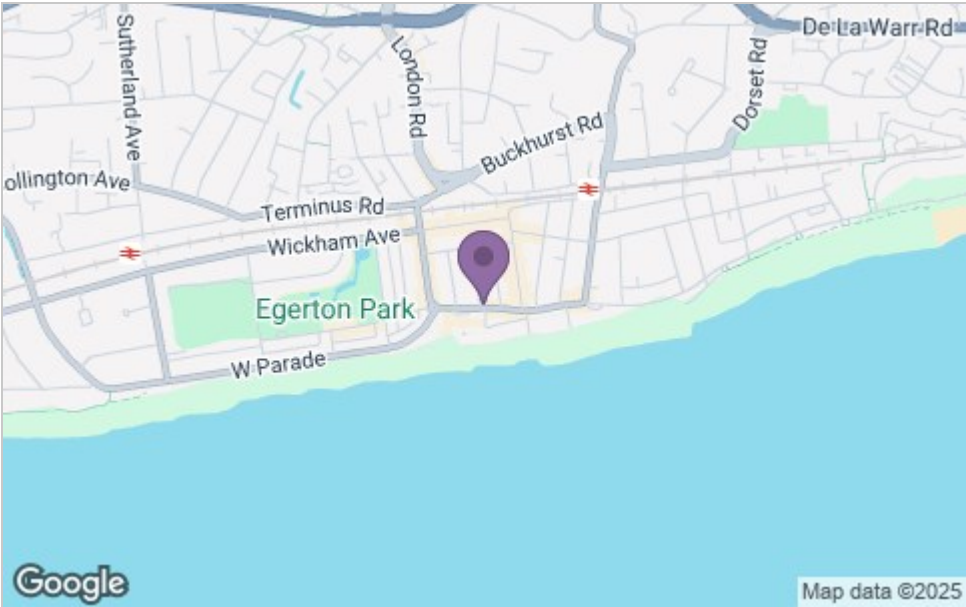




Floor Plan



Area Map



Viewing

Please contact our St Leonards on Sea Office on 01424 420073 if you wish to arrange a viewing appointment for this property or require further information.

These particulars, whilst believed to be accurate are set out as a general outline only for guidance and do not constitute any part of an offer or contract. Intending purchasers should not rely on them as statements of representation of fact, but must satisfy themselves by inspection or otherwise as to their accuracy. No person in this firm's employment has the authority to make or give any representation or warranty in respect of the property.

Energy Efficiency Graph

