



*Jordan fishwick*

Highgate Road Hayfield High Peak



## Highgate Road Hayfield High Peak SK22 2JL

£300,000



### The Property

Close to the heart of ever popular Hayfield, a charming two double bedroom, stone built, end of terrace. Well presented throughout and offered for sale with No Chain. Convenient for Hayfield amenities, this idyllic cottage is a real box ticker. Spacious, light accommodation comprising: living room with vestibule, fitted dining kitchen, wc, useful conservatory/sun room, two generous bedrooms and a bathroom with a white suite. Views to St Matthew's Church, gas central heating, pvc double glazing, a walled frontage and an enclosed, private low maintenance rear garden. Viewing highly recommended. Great Holiday Let Potential!




- Idyllic Location
- Convenient For Hayfield Amenities
- Two Generous Bedrooms
- Stone Built End Terrace
- Well Presented Throughout
- Ground Floor WC
- Enclosed Gardens
- Holiday Let Potential
- No Chain
- Views to St Matthew's Church

**Postcode** SK22 2JL

**EPC Rating** D

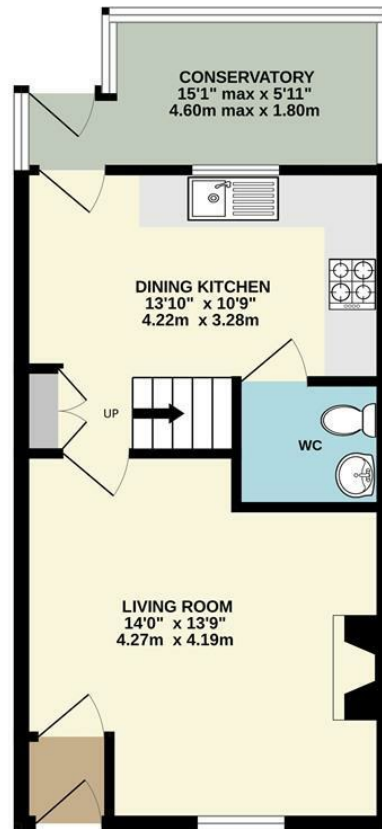
**Local Authority** High Peak

**Council Tax** B

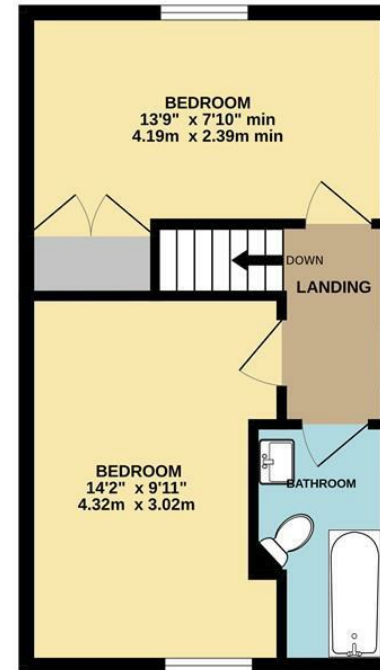
Energy Efficiency Rating		
	Current	Potential
Very energy efficient - lower running costs		
(92 plus) <b>A</b>		
(81-91) <b>B</b>		<b>85</b>
(69-80) <b>C</b>		
(55-68) <b>D</b>	<b>59</b>	
(39-54) <b>E</b>		
(21-38) <b>F</b>		
(1-20) <b>G</b>		
Not energy efficient - higher running costs		
<b>England &amp; Wales</b>	EU Directive 2002/91/EC 	



GROUND FLOOR



1ST FLOOR



Whilst every attempt has been made to ensure the accuracy of the floorplan contained here, measurements of doors, windows, rooms and any other items are approximate and no responsibility is taken for any error, omission or mis-statement. This plan is for illustrative purposes only and should be used as such by any prospective purchaser. The services, systems and appliances shown have not been tested and no guarantee as to their operability or efficiency can be given.  
Made with Metropix ©2026



These particulars are believed to be accurate but they are not guaranteed and do not form a contract. Neither Jordan Fishwick nor the vendor or lessor accept any responsibility in respect of these particulars, which are not intended to be statements or representations of fact and any intending purchaser or lessee must satisfy himself by inspection or otherwise as to the correctness of each of the statements contained in these particulars. Any floorplans on this brochure are for illustrative purposes only and are not necessarily to scale.

Offices at: Chorlton, Didsbury, Disley, Hale, Glossop, Macclesfield, Manchester Deansgate, Manchester Whitworth Street, New Mills, Sale, Wilmslow and Withington

14 Market St, Disley, Cheshire, Stockport SK12 2AA

01663 767878

disley@jordanfishwick.co.uk

www.jordanfishwick.co.uk