



Claremont Square, N1

£3,600 Per calendar month

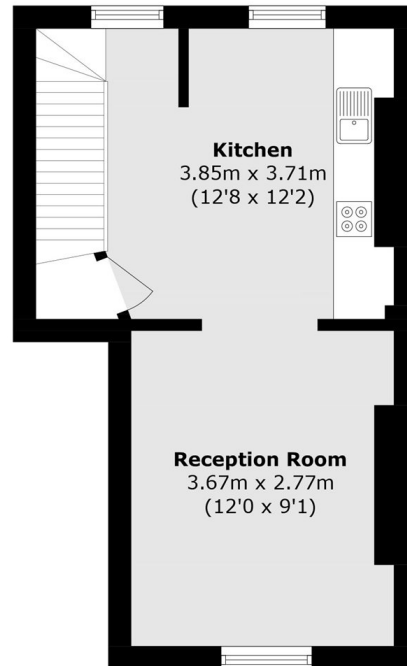
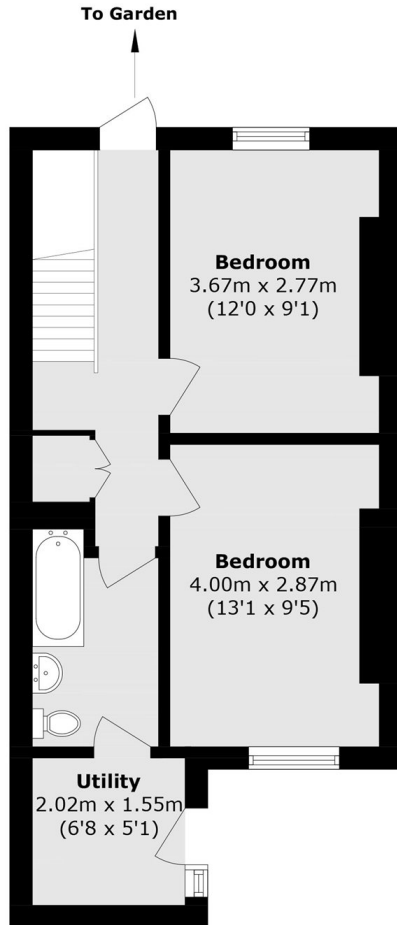
A spacious two double bedroom duplex apartment within a Georgian conversion. The property features a high ceilings, a private garden and utility room.

Claremont Square is located less than half a mile to Angel Station and just over half a mile from King's Cross and Farringdon. The popular Exmouth Market with its wide range of bars and eateries is also just a few yards away.

Features

- Two Bedrooms
- Period Conversion
- Private Garden
- Duplex
- High Ceilings
- Private Entrance

Claremont Square, London, N1



Lower Ground Floor

Ground Floor

Total area (approx): 73.8 sq. m (794.3 sq. ft)