



Guide Price | £950
47 Glebe Close, Coventry, CV4 8DJ



GODFREY-PAYTON
CHARTERED SURVEYORS

Lounge/Diner

25'2" x 11'10"

Large carpeted lounge/dining room with two windows looking over the side garden of the property

Kitchen

12'4" x 9'10"

Kitchen with plenty of floor and wall units, one and half sink with hot and cold mixer tap. Space for dish washer. Window over looking the rear garden.

****Please note the cooker in the photo is NOT included in the Let****

Utility Room

Extra sink and work space, space for washing machine and tumble dryer. Door leading into side passageway.

Study

11'10" x 10'6"

Study to the front of the property, with original parquet flooring and built in storage

Bedroom 1

14'10" x 11'10"

Carpeted bedroom with single light fitting and bay window over looking side garden

Bedroom 2

16'5" x 10'8"

Carpeted bedroom to the front elevation, with single light fitting and window over looking the driveway

Bedroom 3

11'10" x 9'10"

Carpeted bedroom with single light fitting and window over looking the side garden

Bedroom 4

9'10" x 9'8"

Carpeted bedroom with single light fitting and window over looking the rear garden

Bathroom

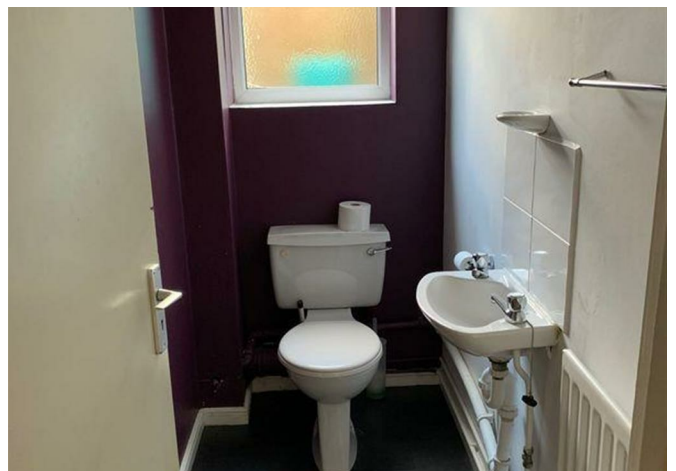
Separate shower with glass screen and electric shower, bath with separate hot and cold taps. Obscure window to the rear elevation and sink with mirrored cabinet above.

Separate WC with toilet and sink.

Diocese Owned

This Property is owned by the Diocese of Coventry and is expected to house a Minister at some time in the future. It is not always possible to determine exactly when the house may be required and therefore there is no guarantee that it will be available for longer than the advertised fixed term.

It may transpire that the property remains available for





GODFREY-PAYTON
CHARTERED SURVEYORS



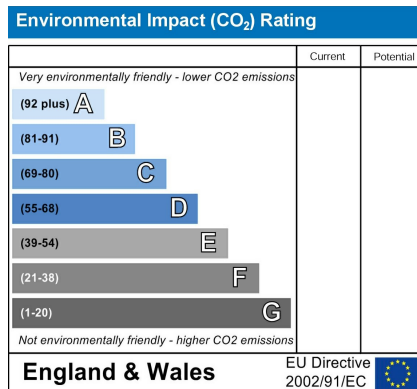
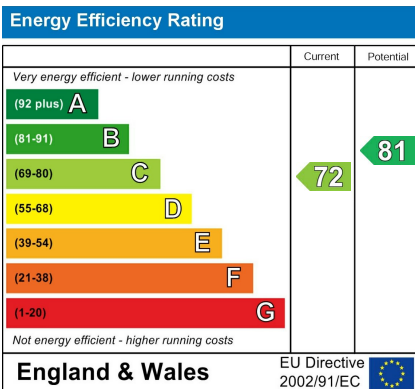
longer than the advertised term however it is important that you understand at this stage that this is by no means guaranteed. The rental value does take into account this element of uncertainty.

By signing the Tenancy Agreement you are confirming that you understand and accept these terms.

VIEWING:

By arrangement with the Agents





INFORMATION

Viewings

To be arranged via Godfrey-Payton on:
01925 492 511

Website

For more information visit our website:
www.godfrey-payton.co.uk

Opening Hours

Monday - Friday 9.00am - 5.30pm
Saturday By Appointment Only
Sunday Closed

