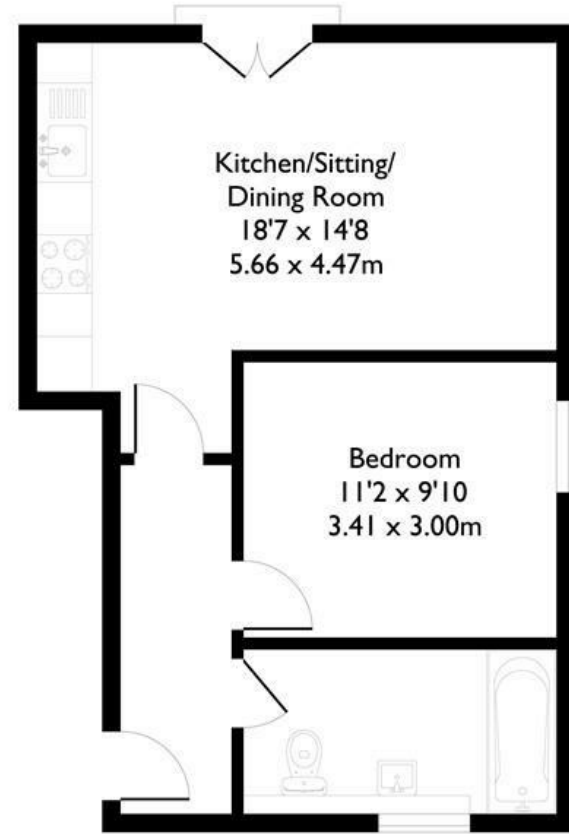


Amberley House, Clocktower Mews, London, W7
Approximate Floor Area = 43.3 sq m / 467 sq ft



First Floor



FLAT

Clocktower Mews W7
£1,500 Per Month

FEATURES

- One Bedroom
- Modern Bathroom
- Spacious Reception
- Excellent Transport
- Elizabeth Line
- Local Amenities

Floor plan produced in accordance with RICS Property Measurement 2nd Edition. Although Pink Plan Ltd ensures the highest level of accuracy, measurements of doors, windows and rooms are approximate and no responsibility is taken for error, omission or misstatement. These plans are for representation purposes only and no guarantee is given on the total square footage of the property within this plan. The figure icon is for initial guidance only and should not be relied on as a basis of valuation.



FLAT

Clocktower Mews W7

£1,500 Per Month

Tucked away in the sought-after Clocktower Mews, this well-presented one-bedroom apartment offers a fantastic opportunity to rent in the heart of Hanwell.

The property comprises a spacious reception room, a well-proportioned double bedroom, a modern bathroom and a well-appointed kitchen, providing a practical and comfortable layout throughout.

Clocktower Mews enjoys a convenient location, just a short distance from Hanwell Station,

