



## Church Road, TW9

£1,900 Per calendar month

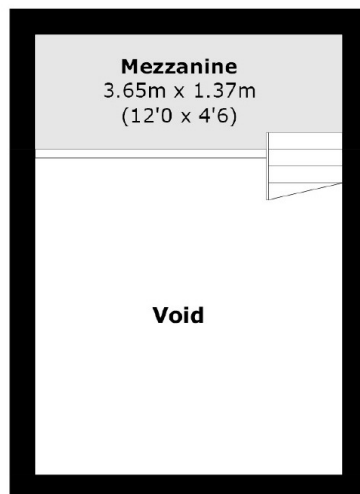
One bedroom apartment within a period conversion in Richmond. The apartment is presented in good condition throughout and is wonderfully located in central Richmond.

Church Road is a popular street in Richmond, close to the station, high street and a wealth of amenities. The open spaces on Richmond Park are also nearby.

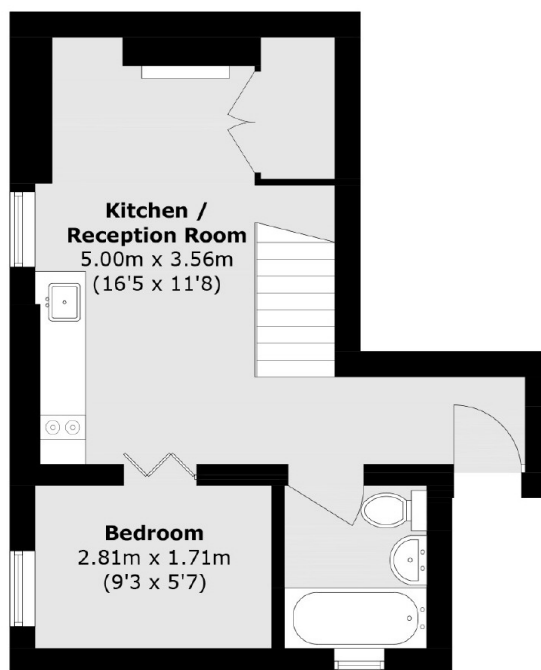
### Features

- Raised Ground Floor
- Mezzanine
- Period Conversion
- One Bedroom
- Close to Station
- Recently Refurbished

# Church Road, Richmond, TW9



## Mezzanine



## Ground Floor

Total area (approx.): 35.7 sq. m (384.2 sq. ft)  
(Excluding Void)