



## Moorhen Drive, NW9

£1,995 Per week

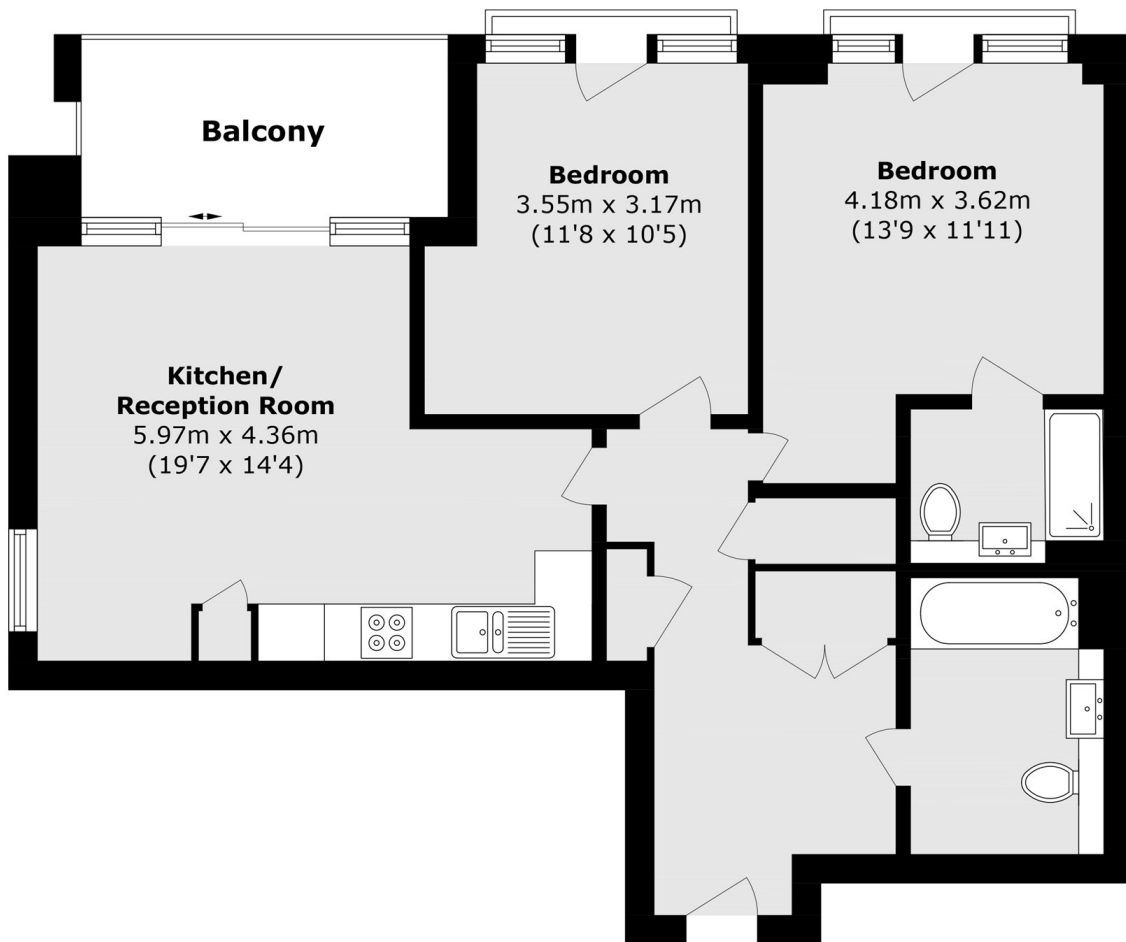
A modern two bedroom, two bathroom luxury apartment on the 19th floor of this sought after block consisting two bedrooms with en-suite to main bedroom, a modern fully fitted kitchen open plan to living room and access to private balcony, family bathroom/WC, and offering a concierge and use of gym.

Conveniently located approximately 0.4 miles from Hendon Mainline Station and within close proximity of Hendon Underground Station and Brent Cross Shopping Centre, overlooking the beautiful Welsh Harp Nature Reserve and Reservoir.

### Features

- Modern Apartment
- Close to Local Amenities
- En-Suite to Main Bedroom
- Private Balcony
- Sought After Development
- Concierge, Gym & Gardens

# Moorhen Drive, London, NW9



Total area (approx.): 71.9 sq. m (773.9 sq. ft)  
Balcony area (approx.): 6.7 sq. m (72.11 sq. ft)