



1

Bedroom



1

Bathroom



One Bed First floor Flat

This spacious One Bed First floor Flat benefits from being located within walking distance of Bluewater shopping and to Greenhithe station.

The property comprises of a communal entrance hall with a staircase leading up to the front door, opening into a lobby with storage cupboard. Straight ahead opens up into a spacious lounge with doors leading off to the double bedroom which overlooks the communal garden, shower room and kitchen.

The property also provides double glazing and carpet throughout the lobby, lounge and bedroom.

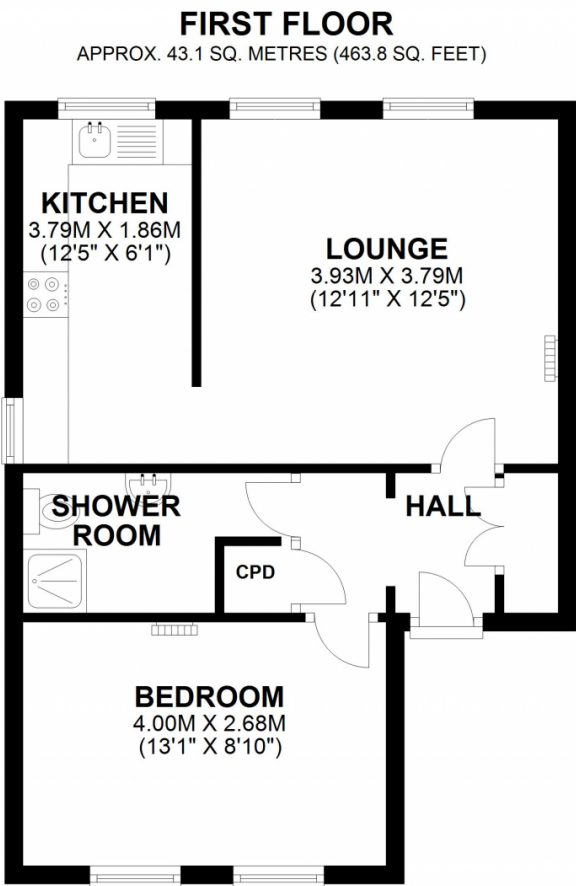
Unfurnished and available from Mid May.

Rent: £950 pcm

Deposit:£1095

Council tax band A

Holding deposit £ 219.23



TOTAL AREA: APPROX. 43.1 SQ. METRES (463.8 SQ. FEET)

