



"Little Meggs" 35 Chewton Common Road, Highcliffe, BH23 5LX

Mitchells
1963 — TODAY



Asking Price £775,000

A truly unique thatched cottage dating back to the 17th century and reputedly one of the oldest buildings in Highcliffe. Old School Cottage is a wonderful home exuding character and many original features and Little Meggs is a delightful, self-contained cottage standing in front which makes superb ancillary accommodation to the main house or could be used for a variety of purposes, whether as an annexe or for rental as required. Surrounded by mature cottage gardens and nestled within the conservation area and just moments from the bustling high street and unspoilt coastline and beaches. Serious enquiries only please.

(THE MAIN COTTAGE) FOUR BEDROOMS • GF BATHROOM • GF SHOWER ROOM • KITCHEN/BREAKFAST ROOM • DINING ROOM • TWO FURTHER RECEPTION ROOMS • UTILITY ROOM

(THE ANNEXE) BEDROOM WITH EN-SUITE WC • KITCHEN • SITTING ROOM • GF SHOWER • GARDENS • OFF-ROAD PARKING



The Property

- Grade II listed property of cob construction with both thatched roofs replaced in recent years
- Glorious, English cottage style gardens with an abundance of specimen trees and shrubs creating a most pretty setting
- Lots of original features with exposed beams and fireplaces, all presented in superb order
- Four bedrooms, two bath/shower rooms in the main house with bright and airy kitchen/diner overlooking the rear garden
- Three ground floor reception rooms giving flexible living space
- Old School Cottage can be split into two, self-contained cottages for home/income purposes if required
- Totally separate, detached cottage with quality kitchen, living room, vaulted bedroom and shower room/wc
- Established income over some years with excellent letting potential- please speak with the agents for further information
- Catchment area for excellent local schools, about one mile to mainline railway station giving access to London in under two hours
- A opportunity to acquire part of Highcliffe's history in this extremely convenient position offering the country lifestyle yet close to the beach
- Council Tax 'B' £1892.93 & 'D' £2433.75
- EPC TBC

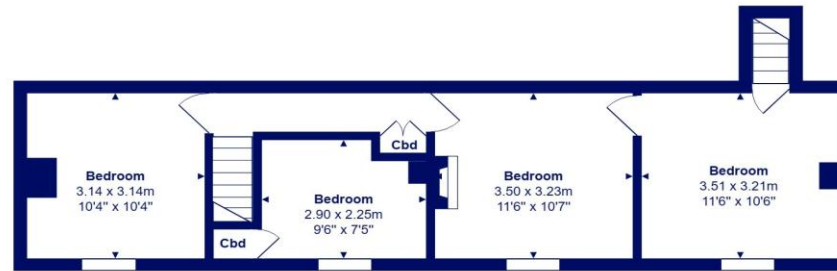




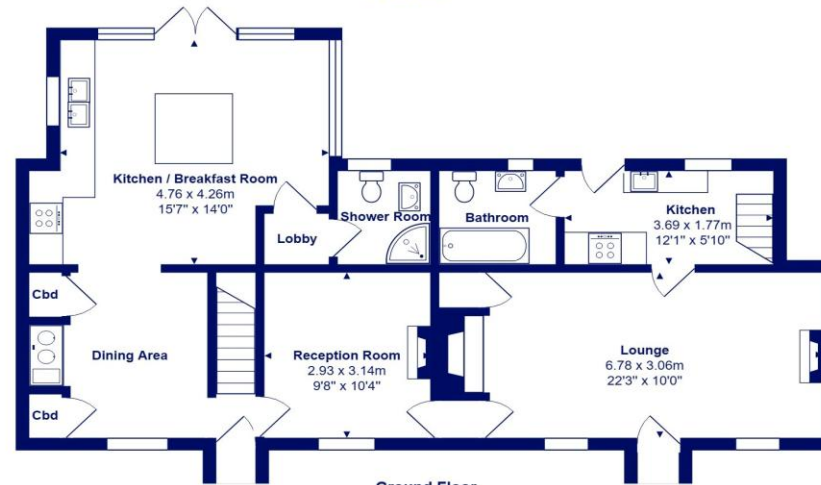
Location

Highcliffe is a small village in the borough of Christchurch, Dorset. The village lies on a picturesque stretch of Solent coastline with views over Christchurch Bay to the Isle of Wight. Fuelled by its enviable location, coastal walks, main line railway links to London (in under two hours) excellent schools and the popularity of the Chewton Glen Hotel, the Highcliffe Golf Course and the Nature Reserve at Steamer Point, Highcliffe is a popular area for those relocating to the coast.

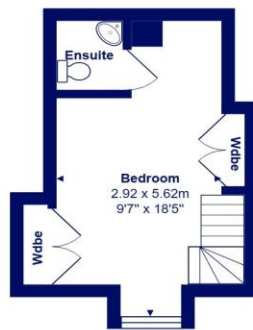




First Floor



Ground Floor



First Floor



All measurements are approximate and for display purposes only







mitchells.uk.com
highcliffe@mitchells.uk.com
01425 272206

Highcliffe on Sea
284 Lyminster Road
Highcliffe on Sea
BH23 4TH

