



## Churchill Gardens, SW1V

£450 Per week

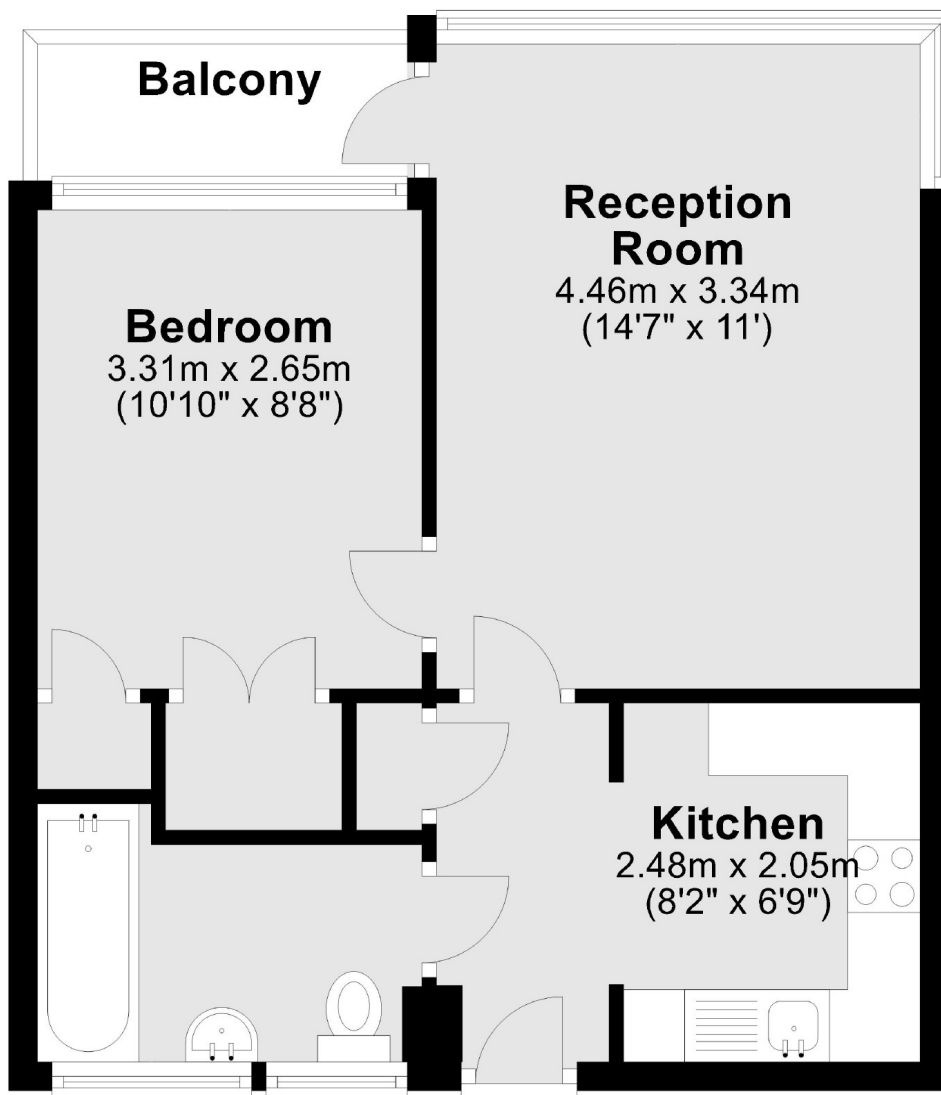
A spacious one double bedroom apartment on the second floor of a purpose built block in Pimlico. Bright reception room with balcony and wood floors, separate kitchen, double bedroom with built in wardrobes and bathroom with shower over bath. Perfect for either a single professional or a couple. Heating and hot water included in the rent.

Moyle House is off Claverton Street, you are right down by the river here and have easy quick access to public gardens and convenient shops. There are some lovely restaurants at the end of the street.

### Features

- One Double Bedroom
- Separate Kitchen
- Wood Floors Throughout
- Balcony
- Heating and Hot Water Included
- Great Location

# Churchill Gardens, London, SW1V



Total area: approx. 39.7 sq. metres (427.5 sq. feet)