

©





This well-presented three bedroom semi-detached house, provides spacious accommodation within this ever popular location and is available with no upper chain involved. Internally the accommodation on the ground floor includes a hall with staircase to the first floor, lounge and a kitchen / diner whilst to the first floor there are three bedrooms and bathroom/wc. There is also a useful outhouse area. Externally there are gardens to the front and rear along with a drive. This convenient location is close to a range of local amenities, shops and schools and provides excellent transport connections to the A19, Doxford International Business Park, Nissan and to Sunderland City Centre. Viewing is highly recommended!

MAIN ROOMS AND DIMENSIONS

Ground Floor

Access via entrance door.

Entrance Hall



Stairs to the first floor with under stairs storage, radiator with radiator cover. Double glazed window.

Lounge 10'0" x 14'5"



Double glazed bay window to front, radiator and feature fireplace. Door to kitchen.

Kitchen/Diner 10'1" x 21'5"



Fitted with modern wall and base units with work surface over incorporating a sink and drainer unit with mixer tap. Space for oven and hob, washing machine, fridge and freezer. 2x double glazed windows to the rear. Storage cupboard and radiator with radiator cover. Door to outhouse.

Outhouse

Doors to the front and rear. Fitted wall and base units, space for dishwasher and tumble dryer. Wall mounted boiler.

First Floor Landing

Single glazed window and access point to loft.

Bedroom 1 9'4" x 13'6"



Double glazed window to rear, radiator and storage cupboard.

Bedroom 2 9'3" x 10'0"



Double glazed window to the front, radiator and storage cupboard.

Bedroom 3 7'10" x 10'11"



Double glazed window to front and radiator.

Bathroom



WC, washbasin and bath with electric shower, radiator and double glazed frosted windows to the side and rear.

Outside



Garden to the front with driveway providing off street parking. Attractive generous gardens to the rear mainly laid to lawn with seating areas and planted borders.

Council Tax Band

The Council Tax Band is Band A.

Tenure Freehold

We are advised by the Vendors that the property is Freehold. Any prospective purchaser should clarify this with their Solicitor.

Important Notice - Particulars

Peter Heron Ltd for themselves and for the vendors of this property whose agents they are, give notice that:- The particulars are set out for general guidance only for the intending Purchasers and do not constitute part of an offer or contract. Whilst we endeavour to make our sales particulars accurate and reliable, if there is anything of particular importance which you feel may influence your decision to purchase, please contact the office and we will

Visit www.peterheron.co.uk or call 0191 510 3323

Tried. Trusted. Recommended. City Branch 20 Fawcett Street Sunderland SR1 1RH Fulwell Branch 15 Sea Road Fulwell Sunderland SR6 9BS

MAIN ROOMS AND DIMENSIONS

be pleased to check the information. Do so particularly, if contemplating travelling some distance to view the property. All descriptions, dimensions, references to conditions and necessary permissions for use and occupation and other details are given in good faith, and are believed to be correct, however any intending purchasers should not rely on them that statements are representations of fact, but must satisfy themselves by inspection or otherwise as to the correctness of each of them. Independent property size verification is recommended.

Lease details, service charges and ground rent (where applicable) are given as a guide only and should be checked and confirmed by your Solicitor prior to exchange of contracts. No person in the employment of Peter Heron Ltd has any authority to make or give any representation or warranty whatever in relation to this property or these particulars, nor to enter into any contract on behalf of Peter Heron Ltd, nor into any contract on behalf of the Vendor. The copyright of all details and photographs remain exclusive to Peter Heron Ltd.

Please note that in the event the purchaser uses the services of Peter Heron Conveyancing in the purchase of their home, Peter Heron Ltd will be paid a completion commission of £300.00 by Movewithus Ltd.

Fawcett Street Viewings

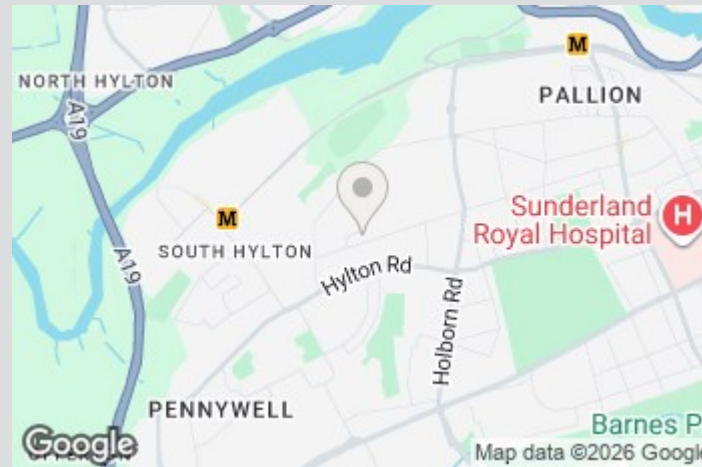
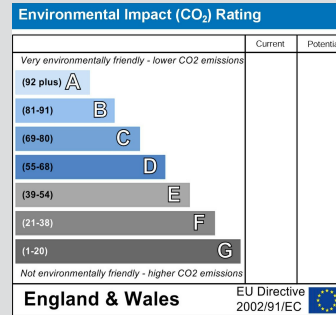
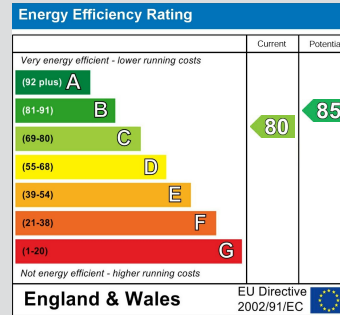
To arrange an appointment to view this property please contact our Fawcett Street branch on 0191 510 3323 or book viewing online at peterheron.co.uk

Opening Times

Monday to Friday 9.00am - 5.00pm Saturday 9.00am - 12noon

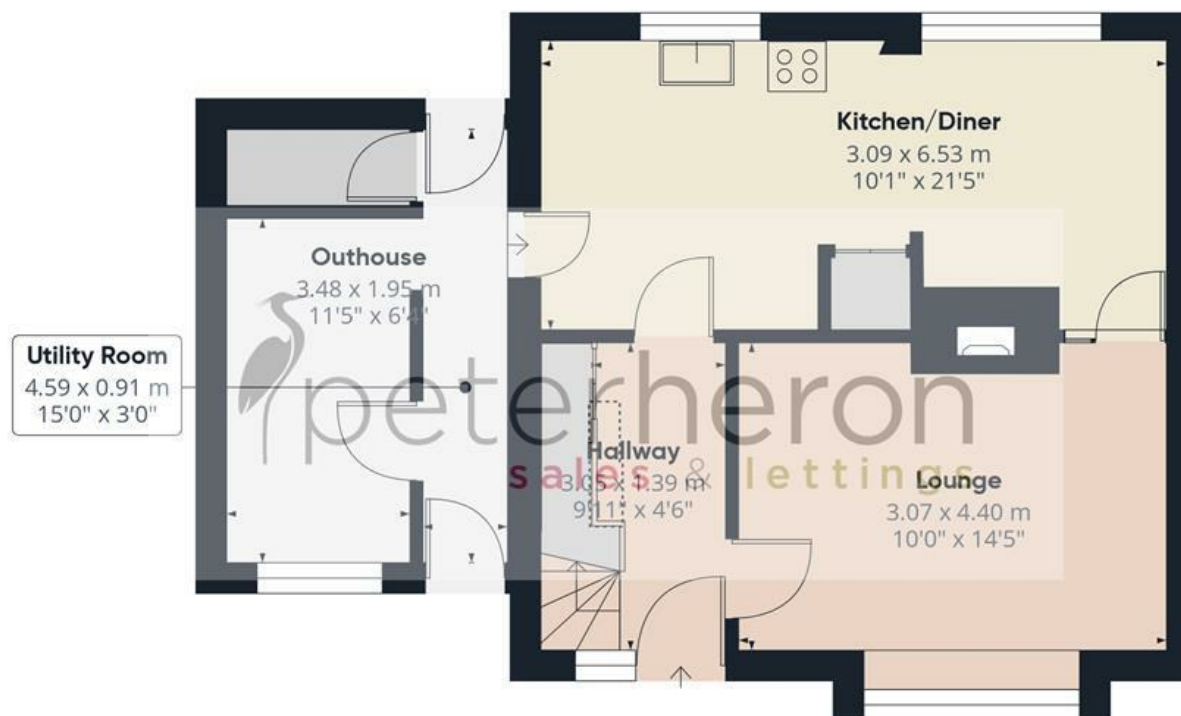
Ombudsman

Peter Heron Estate Agents are members of The Property Ombudsman and subscribe to The Property Ombudsman Code of Practice.



Visit www.peterheron.co.uk or call 0191 510 3323

Tried. Trusted. Recommended. City Branch 20 Fawcett Street Sunderland SR1 1RH Fulwell Branch 15 Sea Road Fulwell Sunderland SR6 9BS



Ground Floor



First Floor

Approximate total area⁽¹⁾

89.2 m²
958 ft²

Reduced headroom

0.4 m²
4 ft²

(1) Excluding balconies and terraces

Reduced headroom

..... Below 1.5 m/5 ft

Calculations reference the RICS IPMS 3C standard. Measurements are approximate and not to scale. This floor plan is intended for illustration only.

GIRAFFE360

