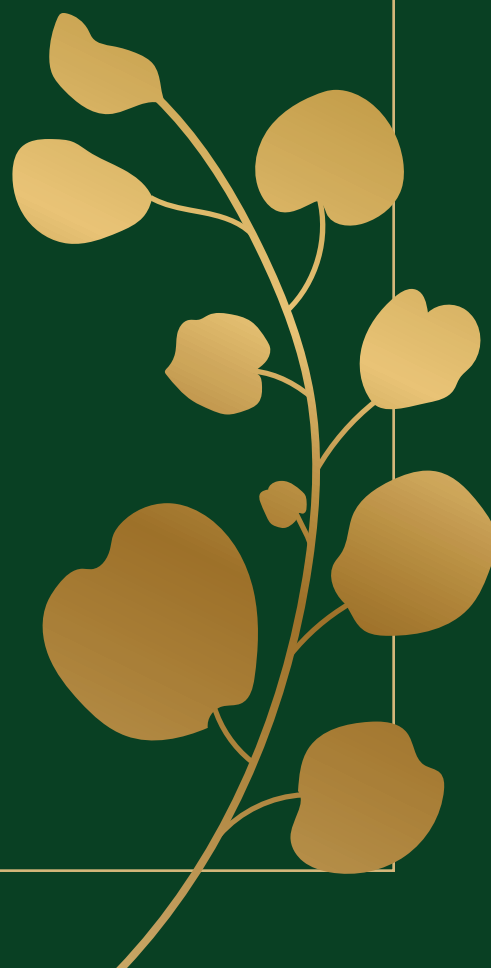




No.64  
LACHE  
LANE  
— Chester —





No.64  
LACHE  
LANE  
— Chester —

Set back along one of Chester's most established residential roads, 64 Lache Lane presents a compelling blend of heritage and thoughtful renovation. Behind electric gates, the house reveals itself with quiet confidence, framed by a generous gravel driveway and mature planting that lends both privacy and presence. The setting feels settled and convenient, with the city centre, the River Dee and the amenities of Westminster Park all within easy reach.



## *A Classic Home Reimagined for Modern Living*

This is a home that honours its past while embracing the expectations of modern life. Dating from the early 20th century, its red brick façade and original proportions speak to a time of considered craftsmanship. Inside, that sense of character has been carefully preserved and elevated through a comprehensive refurbishment.





## *A Welcoming Sense of Arrival*

The entrance sets the tone. A sheltered porch leads into a wide hallway where original parquet flooring, crafted from rich Colombian pine, flows underfoot. High ceilings and panelled walls create an immediate impression of space and quiet elegance. The staircase rises with a gentle sweep, adding a sense of occasion without excess.

Original doors and period detailing have been retained and restored, offering subtle reminders of the home's heritage. The overall effect is warm and inviting, with a refined palette that enhances light and proportion.





## *Spaces to Gather and Unwind*

The principal reception room sits to the front, where a walk-in bay window draws in natural light throughout the day. The room feels calm and composed, centred around a fireplace that offers both character and a natural focal point. It is a space equally suited to quiet evenings or more formal entertaining.





## *Light-Filled Spaces*

Beyond, a second reception room provides a more relaxed setting. Generous in scale and thoughtfully arranged, it lends itself well to family life, with views and access to the garden reinforcing the connection between inside and out. Retained features such as picture rails add depth and interest, while modern touches ensure comfort is never compromised.

An additional reception space offers welcome flexibility. Currently used as a study, it could easily serve as a ground floor bedroom, particularly when considered alongside the adjacent shower room. This adaptability speaks to the evolving needs of modern households, whether for guests, work or multi-generational living.

## *A Kitchen at the Heart of the Home*

To the rear, the house opens into an extended kitchen and dining space that feels both expansive and intimate. Limestone flooring introduces a subtle shift in texture, while underfloor heating ensures year-round comfort.

The kitchen itself is beautifully composed. Quartz worktops are paired with natural wood surfaces, creating a balance between precision and warmth. A central island anchors the room, offering space for informal dining, while a range cooker, Belfast sink and integrated appliances reflect both style and practicality.





Light pours in through sliding doors, drawing the eye towards the garden and inviting a seamless flow between indoor and outdoor living. There is ample space for a large dining table, making this a natural gathering point for everyday life and special occasions alike.

A well-appointed utility room sits discreetly to one side, providing valuable storage and keeping the main living areas uncluttered.



## *Bedrooms Designed from Comfort*

Upstairs, the sense of space continues. Each of the four bedrooms is comfortably proportioned, with an easy balance of light and privacy. The principal bedroom enjoys a calm outlook and is complemented by a dedicated dressing area and a beautifully finished en-suite bathroom. Underfloor heating and considered detailing enhance the sense of quiet luxury.

Additional bedrooms are equally well presented, with several benefiting from their own en-suite facilities. A stylish family bathroom completes the arrangement, featuring both a freestanding bath and a generous walk-in shower.

Throughout, the design remains cohesive, blending classic features with contemporary finishes to create spaces that feel both timeless and comfortable.







## *Gardens and Grounds*

Outside, the grounds have been designed with both practicality and enjoyment in mind. The driveway provides extensive parking and continues around the house, leading to an integrated garage that offers further storage.

The rear garden unfolds in a series of defined areas, beginning with a paved terrace that is ideal for outdoor dining. Beyond, lawns are framed by established trees and planting, creating a sense of depth and seclusion. At the far end, a raised deck captures the best of the sun, offering a peaceful retreat within the garden.

An outdoor kitchen area adds another dimension, providing a space for entertaining that extends the usability of the garden across the seasons. The overall setting feels private and well considered, with a natural flow that mirrors the interior of the home.



No.64  
LACHE  
LANE  
— Chester —

Approximate Gross Internal Area = 250.5 sq m / 2696.7 sq ft

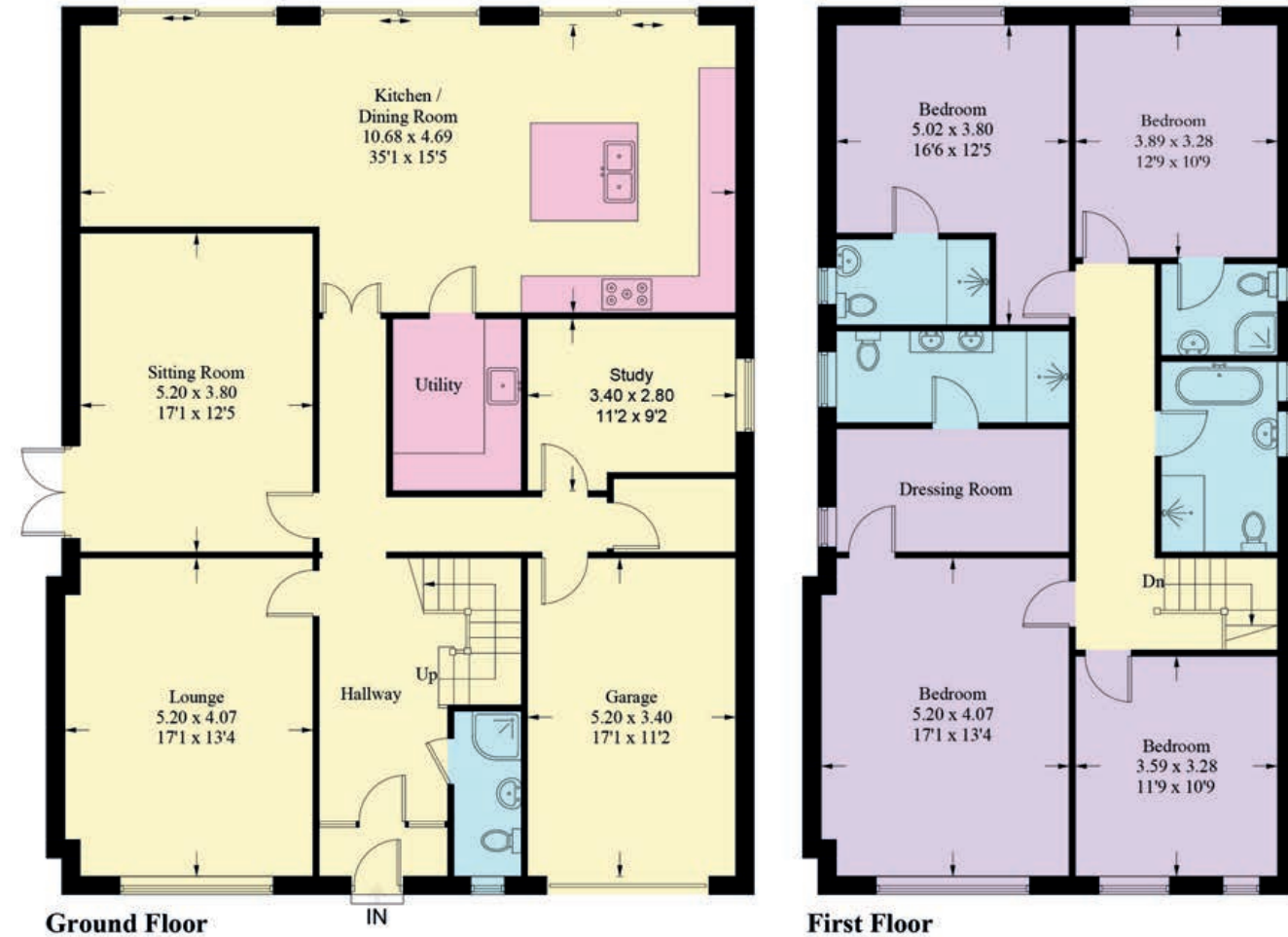
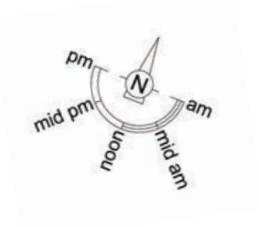


Illustration for identification purposes only, measurements are approximate, not to scale. Fourlabs.co © (ID1292537)

FINER DETAILS

- Freehold
- Council tax band F
- Originally built 1930 with full renovation 2026
- Electric gates
- Gas central heating
- Underfloor heating in bathrooms

*Life on Lache Lane*

Lache Lane is a location that combines convenience with a strong sense of community. Local shops and everyday amenities are close at hand, while Chester city centre is just a short journey away. Here, a rich mix of independent boutiques, restaurants and cultural landmarks awaits, alongside excellent schools and transport links that connect easily to the wider region.

*A Home With Enduring Appeal*

64 Lache Lane is a house of balance. It respects its architectural origins while offering the comfort and flexibility required for modern living. Spaces have been designed to adapt, to welcome and to endure.

For those seeking a home that combines character, quality and a prime Chester setting, it presents an opportunity that feels both rare and entirely natural.



No.64  
LACHE  
LANE  
— Chester —

*presented by*

CURRANS  
*unique homes*

/// WHAT3WORDS: lace.devide.claims

To view 64 Lache Lane  
Call John  
on 01244 313 900  
Email: [kathryn@curranshomes.co.uk](mailto:kathryn@curranshomes.co.uk)

11 Grosvenor Street, Chester CH1 2DD  
[www.curransunique.co.uk](http://www.curransunique.co.uk)



SCAN ME TO  
BOOK A VIEWING