

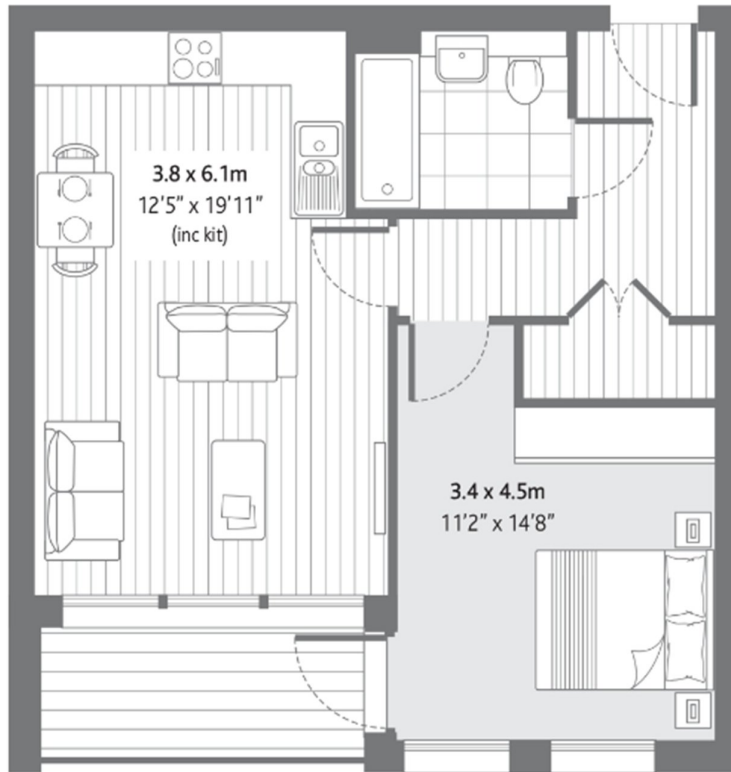


42 EAST COURT, SE9

£275,000

This stunning one bedroom apartment is set around beautiful and landscaped grounds. The property has a large open plan lounge kitchen with integrated appliances and a generously sized bedroom with a modern interior with high-tech appliances. The apartment is also fully furnished.

- 24hr Concierge Service
- Communal Gardens
- Service Charge: £3,136
- Ground Rent: £250



INTERNAL	50.7 sqm	546 sqft
EXTERNAL	6.8	72



LiFE RESIDENTIAL

36 Millharbour, London, E14
9JS
Sales: 020 3668 1033
Lettings: 020 3668 1030

Energy Rating: B. We aim to make our particulars both accurate and reliable. However they are not guaranteed; nor do they form part of an offer or contract. If you require clarification on any points then please contact us, especially if you're traveling some distance to view. Please note that appliances and heating systems have not been tested and therefore no warranties can be given as to their good working order.