



Roebuck Close, Reigate

£1,750 Per Month





“

Verda, a unique development by Life Less Ordinary, offers bespoke 1- and 2-bedroom apartments in Reigate. Featuring high ceilings, large windows, and modern finishes, each home is designed for comfort and style, with parking, EV charging, and excellent transport links.

”



Photos are of the show flat only, but floorplans accurately represent each apartment

Introducing Verda, a stunning new development by Life Less Ordinary, offering a unique collection of 1 and 2-bedroom apartments in the heart of Reigate. This thoughtfully retrofitted building, originally office space, has been transformed into modern, stylish residences that retain original character with high ceilings and large windows. Each apartment has its own distinctive floorplan, ensuring no two homes are alike.

The design combines contemporary elegance with practicality, featuring anthracite aluminium windows, a striking light and dark colour palette, and high-end appliances. Every apartment is tailored for modern living, creating light-filled spaces that blend style with comfort.

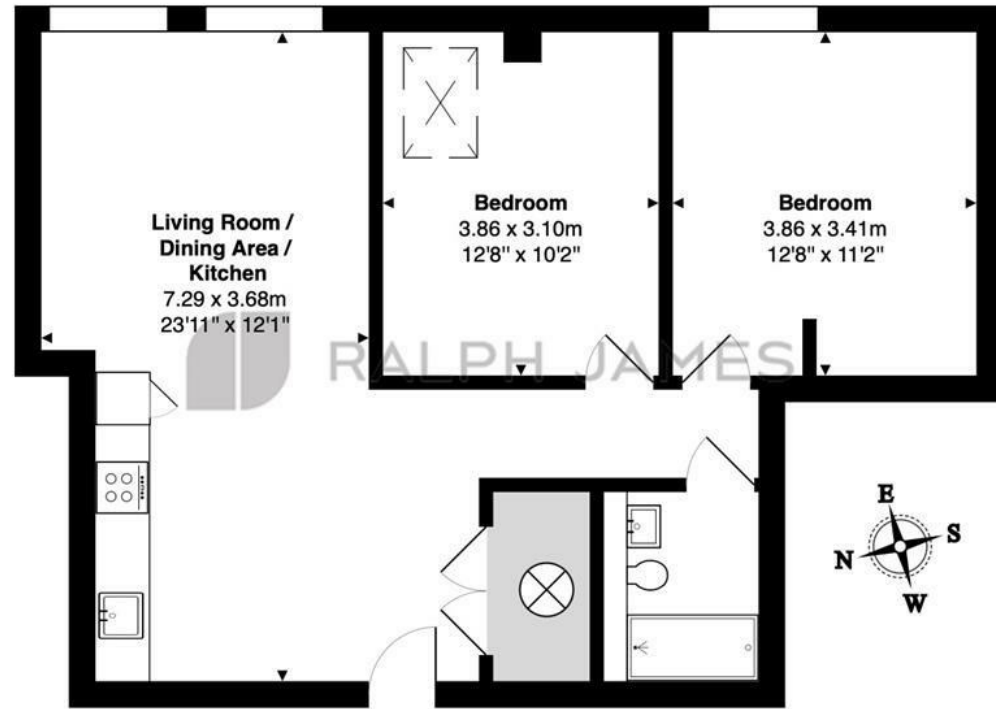
Located just a short walk from Reigate's vibrant town centre, Verda is surrounded by independent shops, cafes, and restaurants, perfect for leisurely days out or nights in. Priory Park, a beautiful green space, is nearby, offering a peaceful retreat for outdoor enthusiasts. For nature lovers, Reigate Hill provides scenic walking trails and stunning views over the North Downs.

Commuters will appreciate the close proximity to Reigate railway station, with regular trains to London in under 45 minutes. Gatwick Airport is also just 20 minutes away, perfect for travel lovers. Verda's parking and EV charging points cater to modern needs, providing convenience and sustainability.

Verda is where design, location, and lifestyle come together. Discover a home that's as individual as you are —your Life Less Ordinary starts here.

Need to know

- Development: Verda by Life Less Ordinary
- Property Type: 1- and 2-bedroom bespoke apartments
- Location: Heart of Reigate, Surrey
- Design: Retro-fitted office building with high ceilings and large windows
- Interiors: Modern finishes with a light and dark colour palette
- Parking: Communal parking
- EV Charging: Available electric vehicle charging points
- Transport Links: Short walk to Reigate station (direct trains to London)
- Nearby Amenities: Independent shops, cafes, restaurants, and Priory Park
- EPC: C



Second Floor

The Verda, Roebuck Close, Reigate

Total Area: 65.9 m² ... 710 ft²

All measurements are approximate and for display purposes only FOR ILLUSTRATIVE PURPOSES ONLY.

Whilst every attempt has been made to ensure the accuracy of the floor plan shown, all measurements, positioning, fixtures, features, fittings and any other data shown are an approximate interpretation for illustrative purposes only and are not to scale.

No responsibility is taken for any error, omission, miss-statement or use of data shown.

The above statement applies to both 'Still Moving London LTD' and the Company or individual displaying this floor plan.

Unauthorised reproduction prohibited.

© Still Moving London LTD (www.stillmoving.london)



Interested?

reigate@ralphjames.co.uk
01737 333677

1

ralphjames.co.uk