



6 Church View, Lanchester

Offers in Region of £160,000



6 Church View

Lanchester, Durham

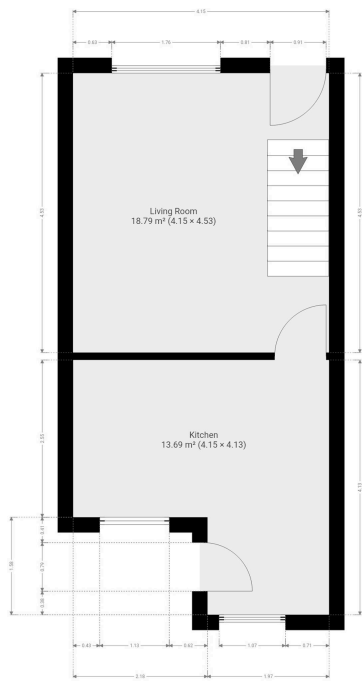
- No Onward Chain | Vacant Possession
- Prime Village Green Position
- Period features
- Stone facade
- Private front garden
- Modern kitchen with integrated oven
- Ample built-in storage
- Contemporary bathroom with walk-in shower and bath
- Feature fireplace
- Large windows with natural light
- Enclosed private courtyard
- Neutral modern decor



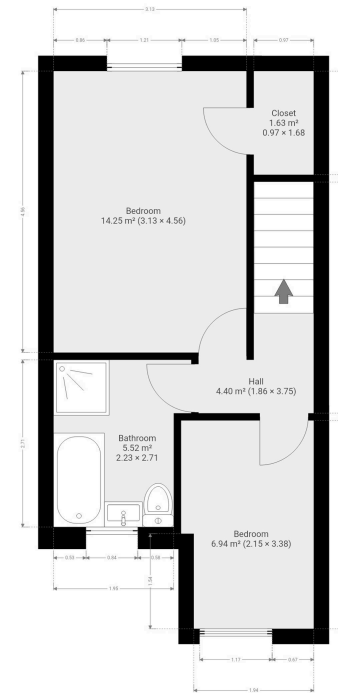








THIS FLOOR PLAN IS PROVIDED WITHOUT WARRANTY OF ANY KIND. SENSIPA DISCLAIMS ANY WARRANTY INCLUDING, WITHOUT LIMITATION, SATISFACTORY QUALITY OR ACCURACY OF DIMENSIONS.



THIS FLOOR PLAN IS PROVIDED WITHOUT WARRANTY OF ANY KIND. SENSIPA DISCLAIMS ANY WARRANTY INCLUDING, WITHOUT LIMITATION, SATISFACTORY QUALITY OR ACCURACY OF DIMENSIONS.



Nested Durham

11a Front Street, Lanchester, DH7 0LA

01207529900 • simon.bourne@nested.com •