



STRAND DRIVE, TW9

£2,850 pcm

This wonderful two bedroom apartment is situated on the higher floor of a well maintained development in Kew. The property has a large separate kitchen, two bathrooms, a private balcony and wood flooring throughout.

- Two Double Bedrooms
- Two Bathrooms
- Wood Flooring
- Separate Kitchen
- Private Balcony
- Gated Development

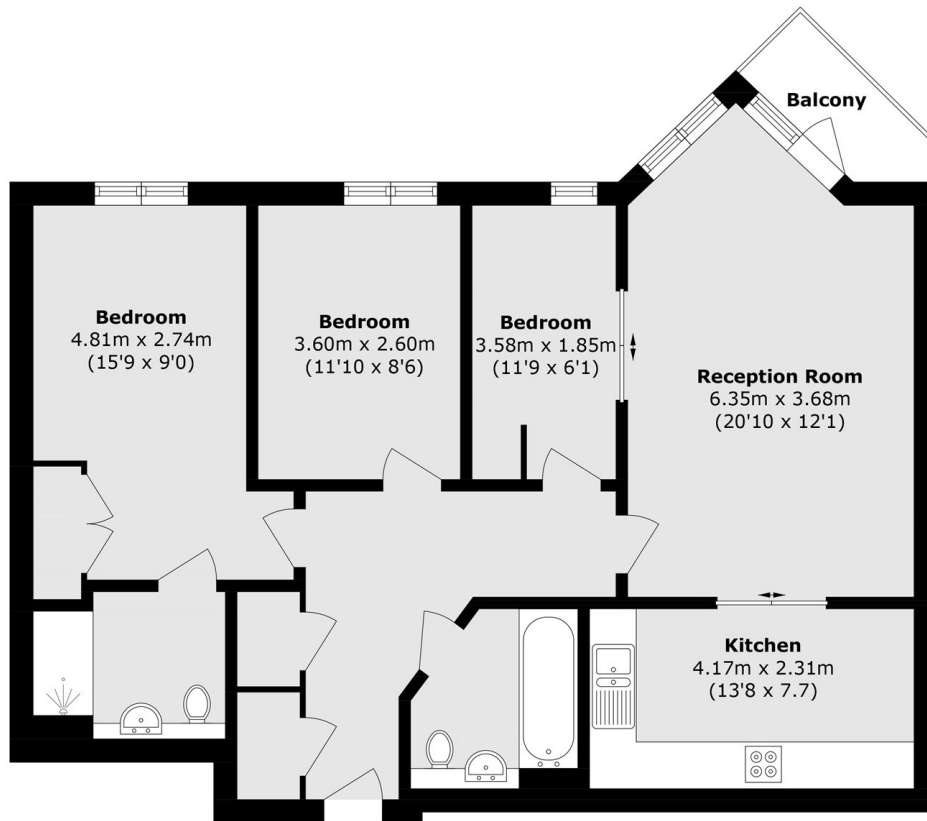


ABOUT THE HOME

This gated development is perfectly located off River Thames, close to all the shops, bars and restaurants of Chiswich High Road as well as the popular Kew Retail Park.







Total area (approx.): 85.2 sq. m (917.1 sq. ft)
Balcony area (approx.): 2.9 sq. m (31.2 sq. ft)

LiFE RESIDENTIAL

203 Trentham Court, Victoria
Road, London, W3 6BT
Sales: 020 3668 1112
Lettings: 020 3668 1111

Energy Rating: . We aim to make our particulars both accurate and reliable. However they are not guaranteed; nor do they form part of an offer or contract. If you require clarification on any points then please contact us, especially if you're traveling some distance to view. Please note that appliances and heating systems have not been tested and therefore no warranties can be given as to their good working order.