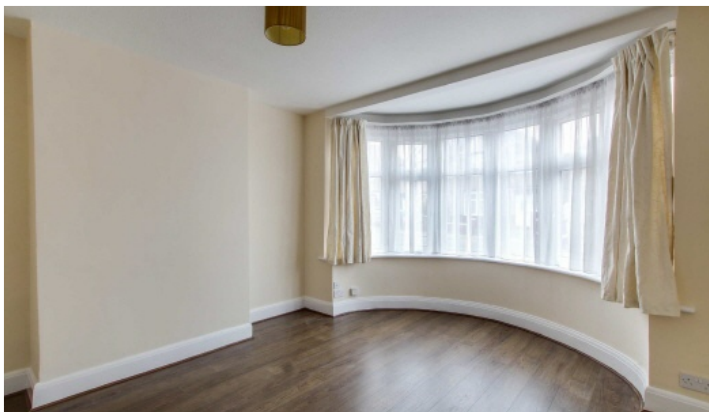


Colin Dean Residential

in partnership with Dexters



Torver Road, HA1

£2,450 pcm

This well-presented three-bedroom home is ideal for families seeking comfortable and practical living. The property features a spacious reception room, a modern open-plan kitchen, and a bright dining area that opens directly onto a private, well-maintained garden, perfect for everyday living and entertaining. Upstairs comprises three generously sized bedrooms and a family bathroom. The property further benefits from off-street parking conveniently located directly in front of the home. Energy Rating: D.

The property is situated in a quiet residential street with local shops, bus stops and popular schools within close proximity. Harrow and Wealdstone station is 0.8 Miles away, giving you access to Overground and Bakerloo lines.

- Semi-Detached House • Three Bedrooms • Two Bathrooms •
- Two Reception Rooms • Private Garden • Off-Street Parking •

Colin Dean Residential

in partnership with Dexters

Colin Dean Residential
350 Pinner Road,
Harrow, HA1 4LB
020 8515 7929
daniel.murray@colindean.com

Energy Rating: D We aim to make our particulars both accurate and reliable. However they are not guaranteed; nor do they form part of an offer or contract. If you require clarification on any points then please contact us, especially if you're travelling some distance to view. Please note that appliances and heating systems have not been tested and therefore no warranties can be given as to their good working order.