

**46 Conway Crescent, Pontypridd, CF38 1HP**  
**£1,150 Per Calendar Month**

**\*\* Semi Detached House \*\* Three Bedrooms \*\* Available Now \*\***

Located in the popular village of Tonteg. Conveniently located for amenities, schools, local shops and main roads.

A semi detached house with front/rear gardens and garage.

Comprising entrance porch, hallway, cloaks/wc, lounge/diner, kitchen, three bedrooms and shower room.

Available now.

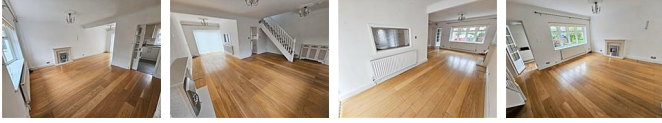
Contact us now.

Entrance Porch

Hallway

Cloaks/WC

Lounge/Diner 23'0" x 16'11" max 7'10" min (7.02 x 5.17 max 2.39 min)



Kitchen 9'9" x 8'6" (2.98 x 2.61)



First Floor Landing

Bedroom 1 12'9" x 9'4" (3.89 x 2.87)



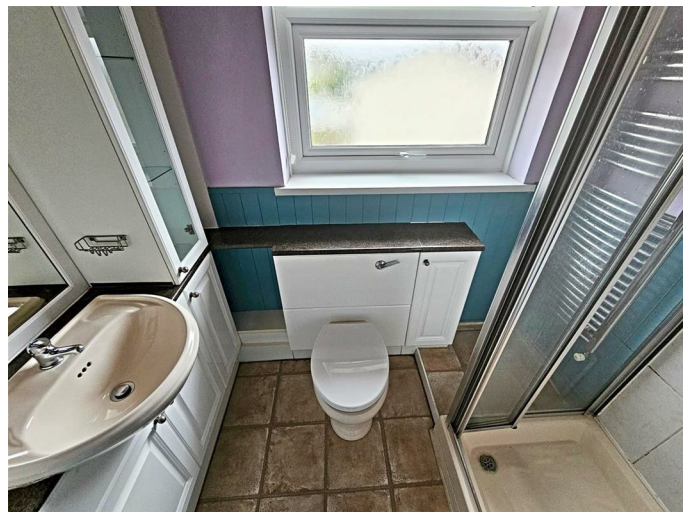
Bedroom 2 9'11" x 9'4" (3.03 x 2.85)



Bedroom 3 8'11" x 7'2" max (2.72 x 2.20 max)



Shower Room

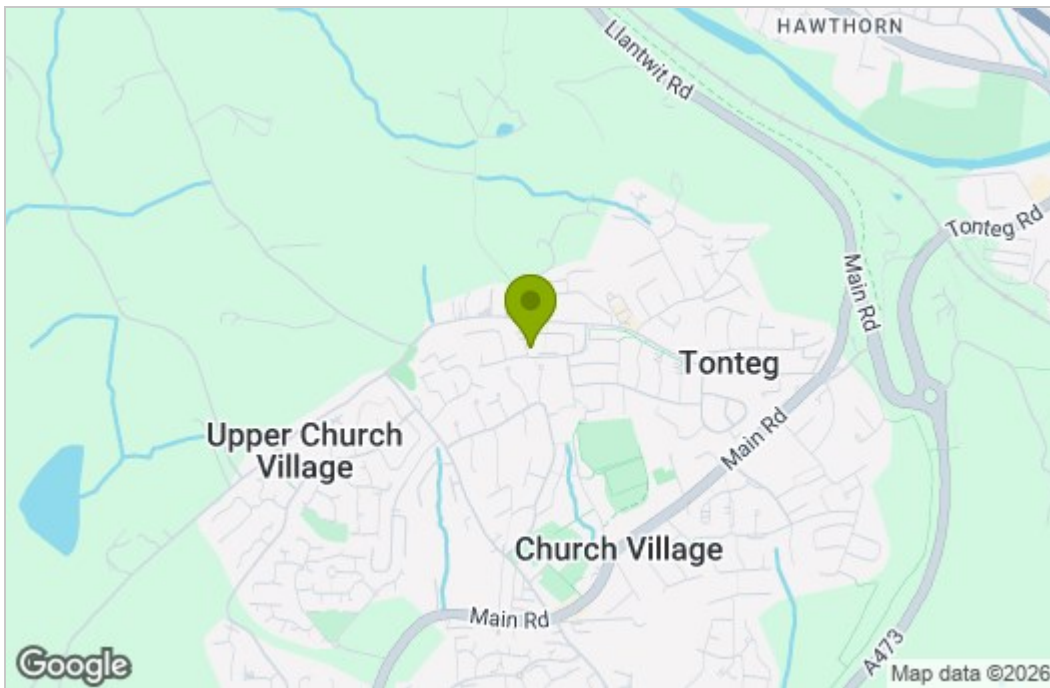


Outside

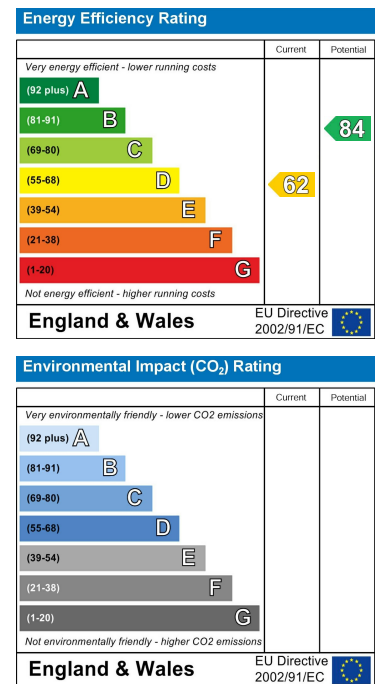


# Floor Plan

## Area Map



## Energy Efficiency Graph



These particulars, whilst believed to be accurate are set out as a general outline only for guidance and do not constitute any part of an offer or contract. Intending purchasers should not rely on them as statements of representation of fact, but must satisfy themselves by inspection or otherwise as to their accuracy. No person in this firm's employment has the authority to make or give any representation or warranty in respect of the property.

22 Market Street, Pontypridd, CF37 2ST

Tel: 01443 404093 Email: [pontypridd@hoskinsjohnson.co.uk](mailto:pontypridd@hoskinsjohnson.co.uk) [www.hoskinsjohnson.co.uk](http://www.hoskinsjohnson.co.uk)