



HARDINGS

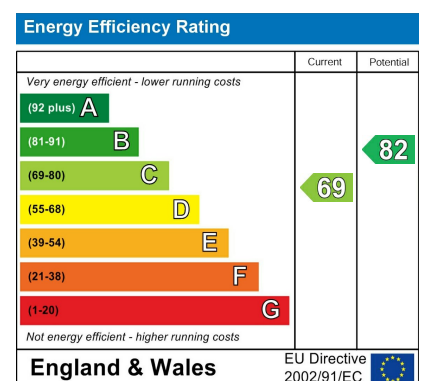


Hemwood Road
£2,750 Per Month



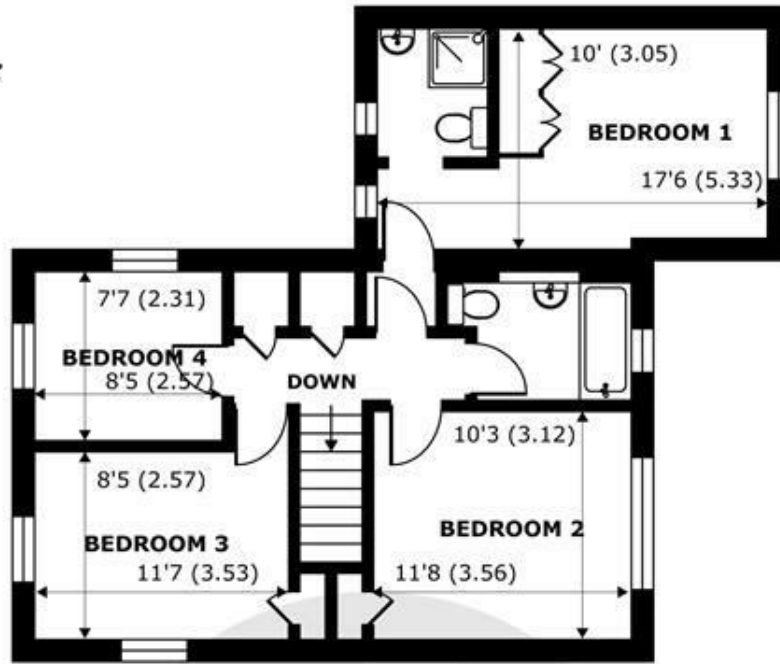
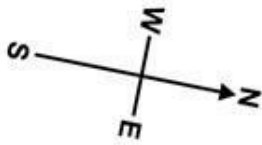


A handsome four bedroom link-detached family house located in a quiet road in West Windsor. The property comprises entrance hall, living room, kitchen/dining room, three double bedrooms (one with en-suite), one single bedroom and a family bathroom. Landscaped rear garden with patio. Integrated single garage with driveway parking. Unfurnished. Council Tax Band F. EPC:C.

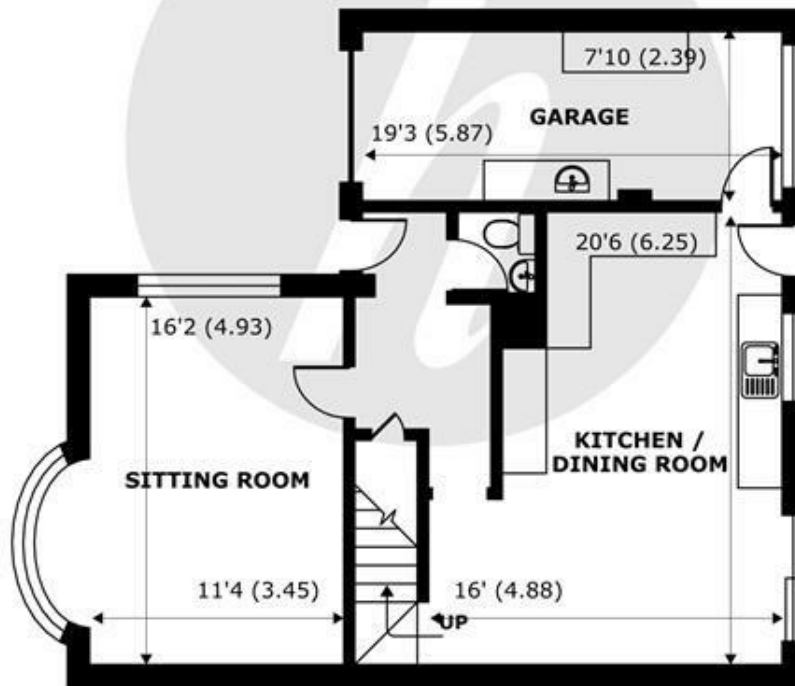


Features

- Four bedroom house
- Spacious kitchen/dining room
- Landscaped garden
- Garage and driveway
- Link-detached
- Separate living room
- Quiet location
- Council Tax Band F & EPC C



FIRST FLOOR
abt 761 SQFT (70.7 SQMT)



GROUND FLOOR
abt 710 SQFT (65.9 SQMT)

Hemwood Road, Windsor, SL4

Approximate Internal Area = 1245 sq ft / 115.7 sq m (Excludes garage)

Garage = 156 sq ft / 14.5 sq m

Approximate External Area = 1471 sq ft / 136.7 sq m (Excludes garage)

Total = 1401 sq ft / 130.2 sq m

For identification only - Not to scale



Floor plan produced in accordance with RICS Property Measurement Standards incorporating International Property Measurement Standards (IPMS2 Residential). © nichecom 2023. Produced for Hardings. REF: 1018809





11 High Street, Windsor, Berkshire, SL4 1LD,
T: 01753 833 118 | E: info@hardings.co.uk
www.hardings.co.uk

