

Tadworth, Surrey, KT20



Price as listed



This pre-owned Sunseeker Langdale (36'x12') is perfect for those looking for a detached, easy to maintain, bungalow-style property. The home has a kitchen and dining room, living room, one double bedroom with patio doors and fitted wardrobes, a second single bedroom or office, and a shower room. The home has a private garden with a shed.

This development is a short distance from Box Hill viewpoint with the North and South Downs on your doorstep. The town of Dorking and Leatherhead are just 6 miles away and are easily accessible by car or public transport and offer an array of amenities, theatres and entertainment. Epsom Downs Racecourse is 15 minutes drive away and is a must-visit for racing fans.

Age restriction: Over 25s

Pet friendly; Yes

Site fees (at time of listing): £286.56 per month

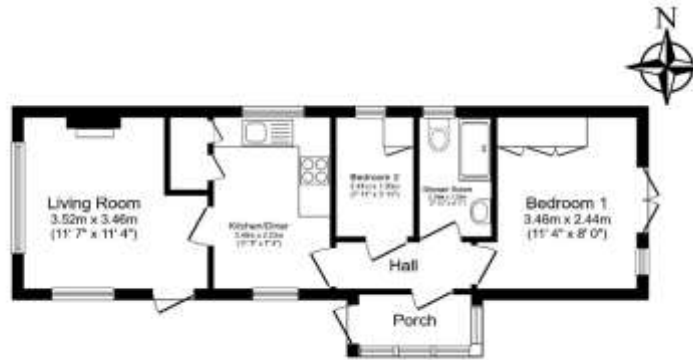
Residential licence

House to sell?

Hassle-free Property Part-Exchange is available from Quickmove Properties, with no estate agent fees, no solicitor's fees and no market uncertainty.

Key Features

- Bus stop nearby
- Community living
- Established park
- Garden space
- Over 25s
- Part Exchange available
- Pets welcome
- Pre-owned park home
- Property is vacant
- Residential development



CONTACT US

01793 840917

advice@quickmoveproperties.co.uk

