

Frank Harris & Co.



Queen Alexandra Mansions, WC1H

£425,000

Offered to the market is this one-bedroom apartment in good condition with great potential, located on the first floor of a sought-after development. The property comprises a bright and spacious reception room, a kitchen, a double bedroom, and bathroom. Additional benefits include a share of the freehold, access to a caretaker, lift service, and a communal roof terrace offering stunning panoramic views of London.

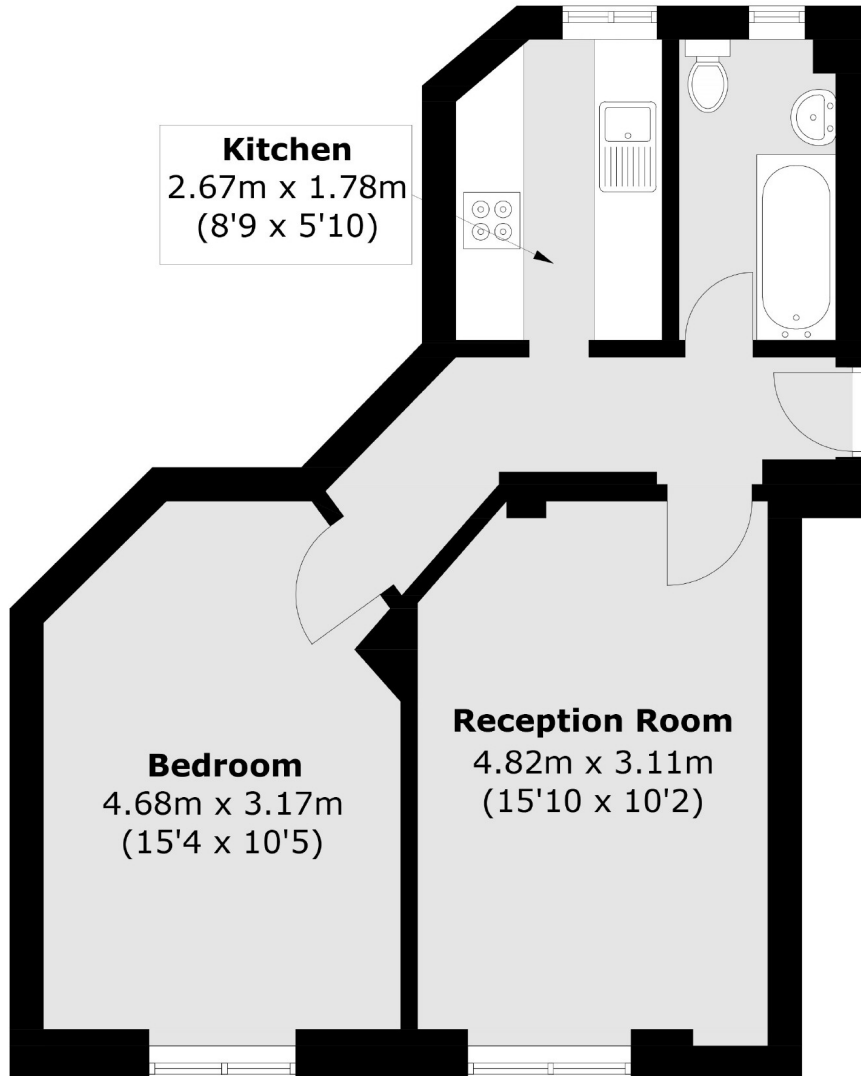


Queen Alexandra Mansions is ideally located just a 6-minute walk from King's Cross St Pancras Station and a little over 10 minutes from Russell Square Station. Residents also benefit from excellent local amenities, with the shops, restaurants, and cafés of the Brunswick Centre just a 5-minute walk away.

- Share of freehold • One Bedroom • Chain Free •
- Mansion Block • Caretaker • Central London •



Frank Harris & Co.



Total area (approx.): 45.0 sq. m (484.4 sq. ft)

Frank Harris & Co. Bloomsbury and Kings Cross

81 Marchmont Street,

London, WC1N 1AL

020 7405 4444

bloomsburysales@frankharris.co.uk

Energy Rating: . We aim to make our particulars both accurate and reliable. However they are not guaranteed; nor do they form part of an offer or contract. If you require clarification on any points then please contact us, especially if you're traveling some distance to view. Please note that appliances and heating systems have not been tested and therefore no warranties can be given as to their good working order.

