



Brickett Close, Ruislip, HA4 7YE

A well-presented two-bedroom house situated in a quiet residential close in Ruislip, recently refurbished to provide a fresh and modern living environment and available immediately. The property comprises a bright and spacious reception room, a fitted kitchen, and two generously sized bedrooms. The recent improvements include brand new carpets throughout and full redecoration, giving the home a clean and refreshed feel. The property also benefits from a bathroom and a convenient downstairs W/C. Additional features include a private rear garden and parking. Ideally located within easy reach of Ruislip's local amenities, highly regarded schools, and excellent transport links via Ruislip and Ruislip Manor stations (Metropolitan & Piccadilly Lines), this property is well suited to professionals, couples, or small families.



AVAILABLE IMMEDIATELY

DISTANCE TO STATION

West Ruislip (1.2 Miles) - Central line

Ruislip (1.3 Miles) - Metropolitan and Piccadilly

COUNCIL TAX

London Borough of Hillingdon - Band D - £1720.81

UNFURNISHED

PARKING

Non allocated on street parking.

MANAGED BY LANDLORD

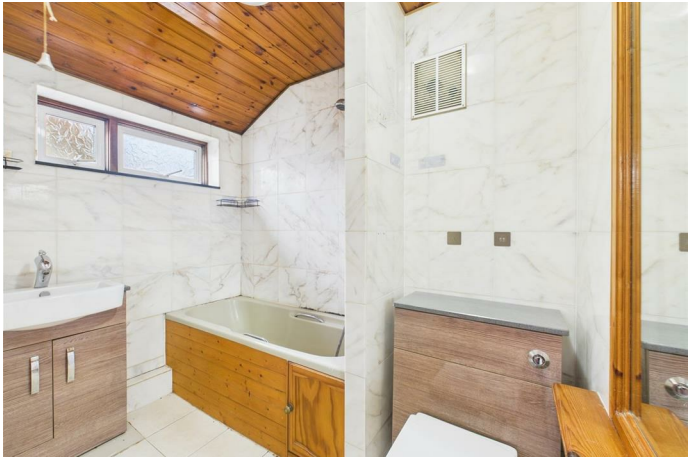
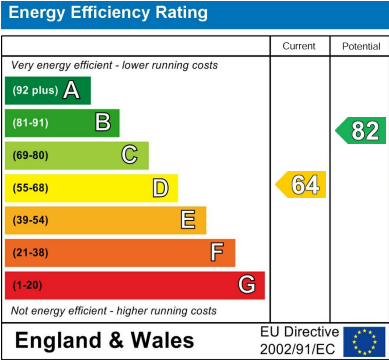


92 High Street, Ruislip, Middlesex, HA4 8LS

T: 01895 625999

lettings@gibsonhoney.co.uk

www.gibsonhoney.co.uk



You may download, store and use the material for your own personal use and research. You may not republish, retransmit, redistribute or otherwise make the material available to any party or make the same available on any website. These particulars, whilst believed to be accurate are set out as a general outline only for guidance and do not constitute any part of an offer or contract. Intending purchasers should not rely on them as statements or representation of fact, but must satisfy themselves by inspection or otherwise as to their accuracy. No person in this firms employment has the authority to make or give any representation or warranty in respect of the property.