



Kingsland Road, E8 £800,000

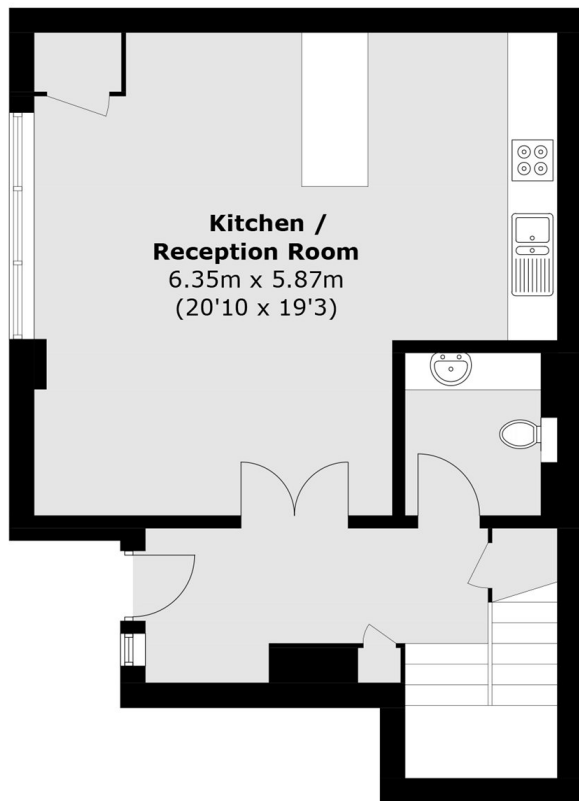
This well presented and spacious two-bedroom, two-bathroom home is arranged over two floors in a desirable East London location. The property offers off-street parking, a private entrance, and open-plan living with floor-to-ceiling windows, along with a separate WC, all set across almost 1,000 sq ft of living space.

Quebec wharf is a quiet and peaceful gated residence set well back from Kingsland Road and is conveniently located for Haggerston Overground (0.1 miles) and the many bus routes serving Liverpool Street and the City found on Kingsland Road. The extensive selection of shops, bars & restaurants found in Shoreditch (1.1 miles), Dalston (0.5 miles) and Haggerston are also within easy reach.

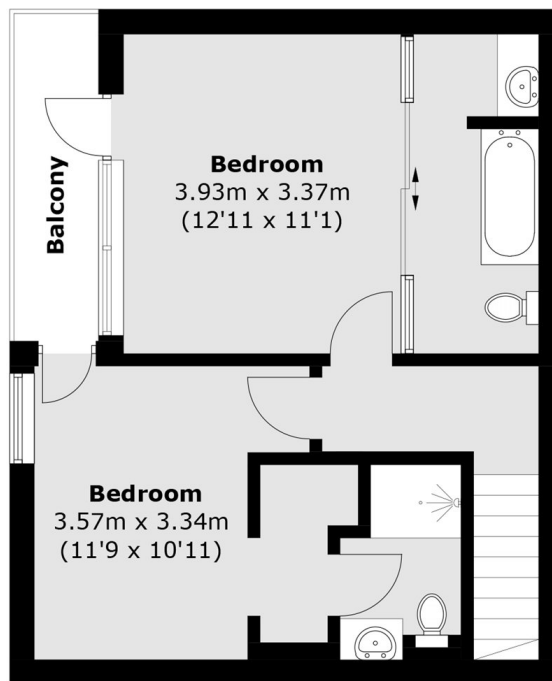
Features

- Two Bedrooms
- Two Bathrooms
- Open Plan
- Gated Development
- Parking
- Chain Free

Kingsland Road, London, E8



Ground Floor



First Floor

Total area (approx.): 92.1 sq. m (991.4 sq. ft)
Balcony: 4.1 sq. m (44.1 sq. ft)