



Station Road, N11

£450,000

Located on the fourth floor of a modern lift-assisted block, this two bedroom flat provides a light and airy living space through the East and West facing balconies. An ideal property for individuals looking for transport links, it is in turn key condition and benefits from a social open plan kitchen/living.

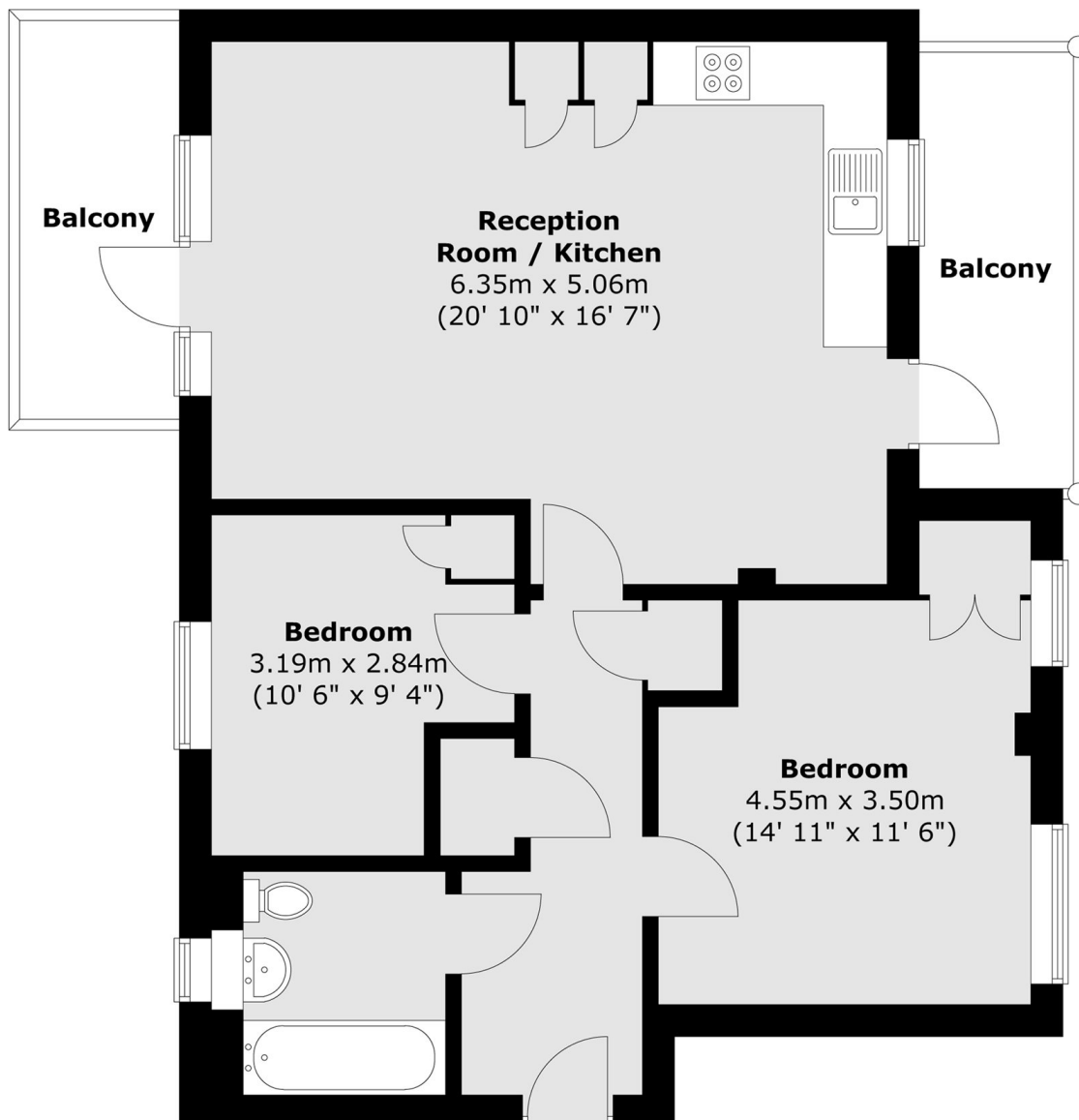
New Southgate Overground station is located 0.1 miles from the property which provides useful transport to Moorgate, Finsbury Park and Kings Cross. Arnos Grove underground stations (Piccadilly line) is approximately 0.5 miles from the property.

Features

- Two Double Bedrooms
- Two Balconies
- Lift Assisted Block
- Open Plan Living
- Modern Build
- Transport Links into City

Station Road, London, N11

Fourth Floor



Total area (approx.) : 67.6 sq. m (728 sq. ft)
Total balcony area (approx.) : 11.6 sq. m (125 sq. ft)