



Heathcroft Avenue, TW16

£499,950

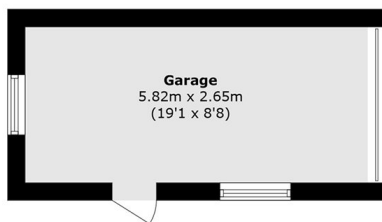
An extended three bedroom semi-detached house with a large private garden and a garage. The property is filled with potential and perfect for a family looking for a house that they can put their own stamp on. This property is being sold with no forward chain.

Heathcroft Avenue is located in Sunbury on Thames, this popular residential road provides easy access to the local amenities including local shops and great transport links. Sunbury Station is a direct service to London Waterloo and is under a mile away.

Features

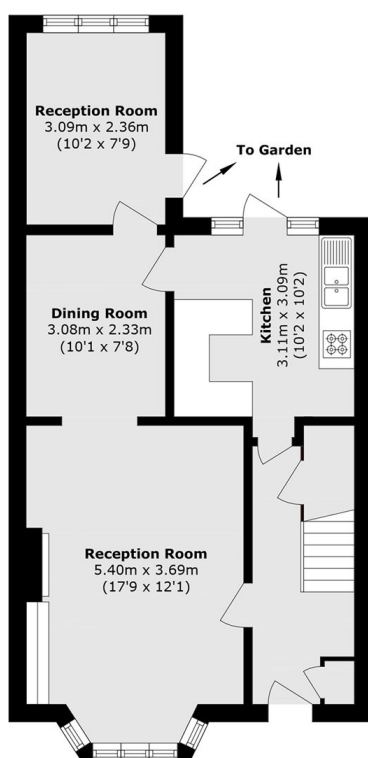
- Semi-Detached
- Three Bedrooms
- Large Private Garden
- Potential to Extend (STPP)
- Garage
- No Forward Chain

Heathcroft Avenue, Sunbury-On-Thames, TW16

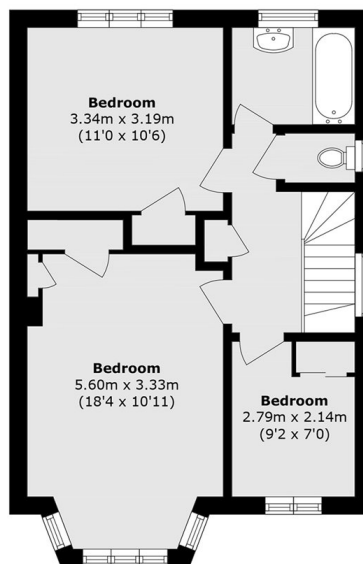


To Garden

Ground Floor



Ground Floor



First Floor

Total area (approx.): 100.1 sq. m (1077.4 sq. ft)

(Excluding Garage)

Garage area (approx.): 15.4 sq. m (165.7 sq. ft)