



10 Ingleton Close, Holmes Chapel, CW4 7LF

£375,000

**GASCOIGNE
HALMAN**

THE AREA'S LEADING ESTATE AGENCY



10 Ingleton Close

Holmes Chapel

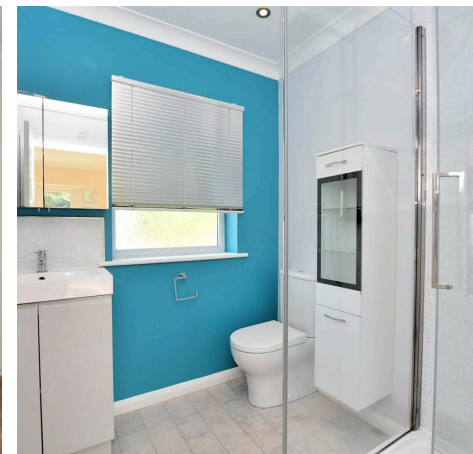
Situated on a large plot at the head of a cul- de- sac a three bedroom detached bungalow with gardens to three sides a garage and off road parking
Council Tax band: D

Tenure: Freehold

EPC Energy Efficiency Rating: D

EPC Environmental Impact Rating: D

- Gardens wrapping around three sides
- Three bedrooms, bedroom one and three giving access to the rear garden
- Modern kitchen diner leading seamlessly to the living room
- Garage and off road parking
- Utility with WC
- No onward chain
- Detached freehold bungalow situated on a large plot
- Bedroom one with en suite shower room



10 Ingleton Close

Holmes Chapel

Ingleton Close is a popular location being just off Coniston Drive in Holmes Chapel, a sought after development.

This particular property is located in a corner plot providing gardens to the front, side and rear.

As you enter you are greeted by a large welcoming hallway, the modern kitchen with its integrated appliances and ample storage leads to a dining area which in turn takes you to the living area with its electric fire centre piece. For added convenience is a utility with sink, space for appliances and also includes a WC.

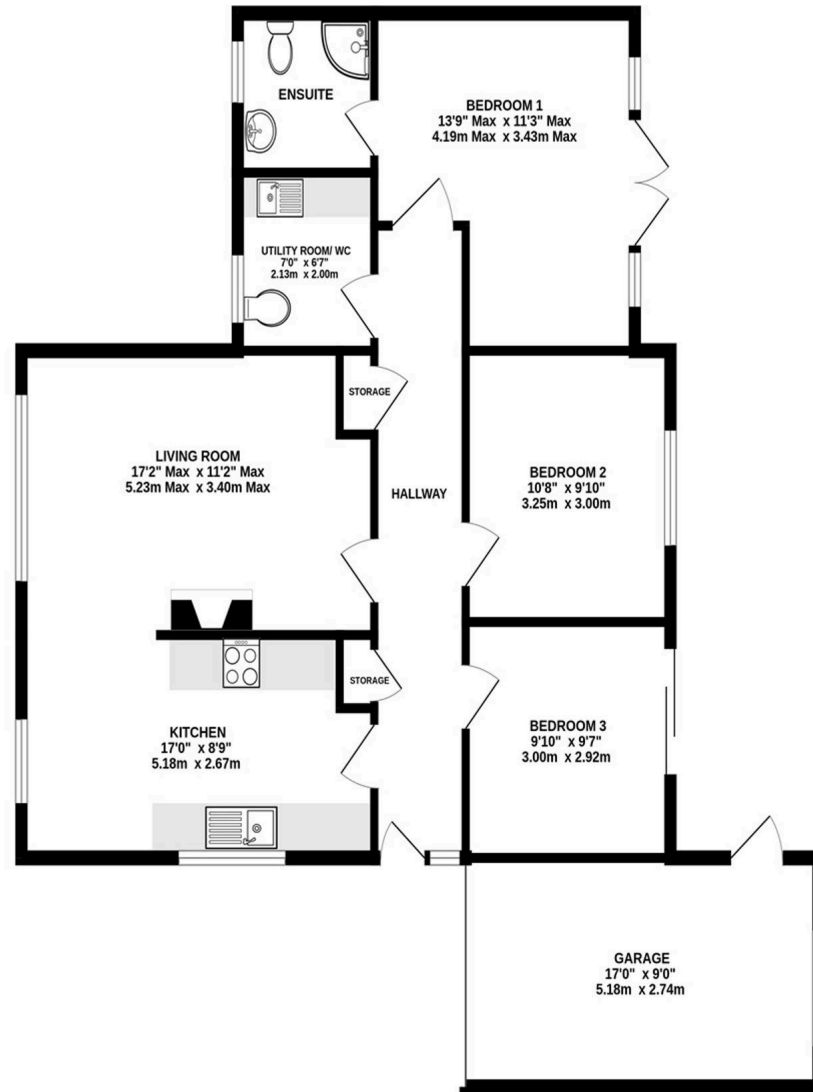
All three bedrooms are situated at the back of the property with bedroom one having an en suite shower room and double doors opening out to the garden. Bedroom three also benefits from doors which slide open onto the paved outdoor patio area.

The private rear split level garden is mainly laid to lawn with patio area and plenty of mature shrubs and trees. Access to the garden can be made by gates from either side of the property and through the garage with its courtesy door. With ample off road parking this bungalow must be viewed to be appreciated.

Offered for sale with no onward chain.



GROUND FLOOR
1023 sq.ft. (95.0 sq.m.) approx.





THE AREA'S LEADING ESTATE AGENCY