



18 Elm House Thomas Blake Avenue, Southampton

In Excess of £250,000





18 Elm House Thomas Blake Avenue

Southampton, Southampton

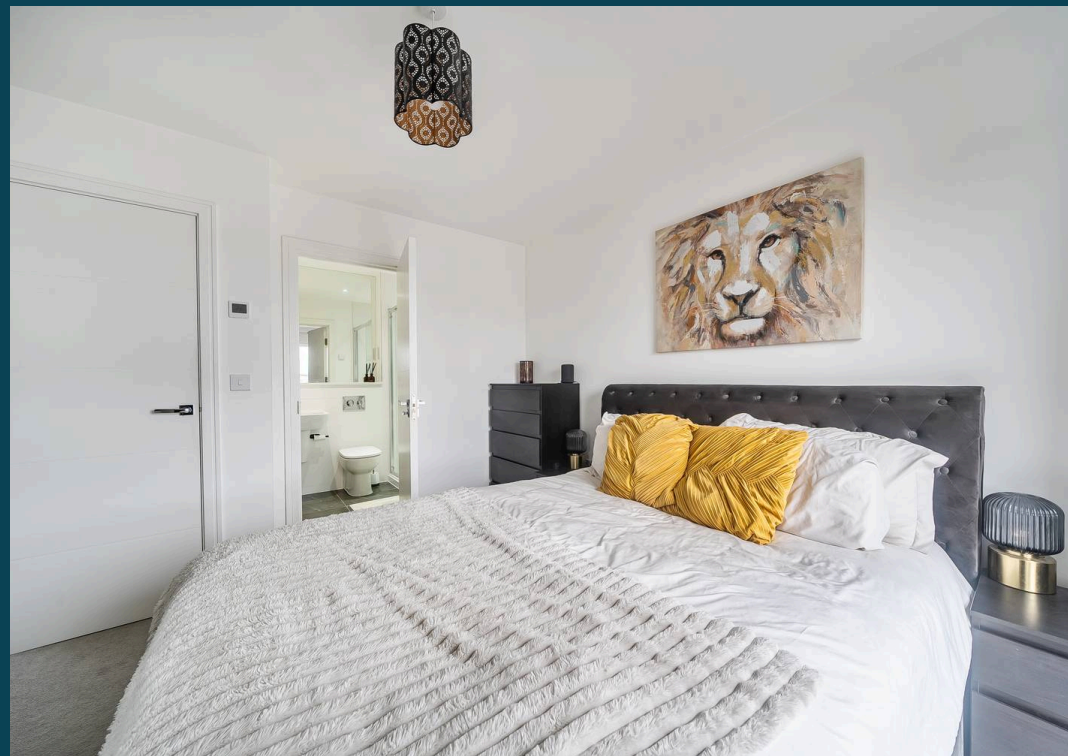
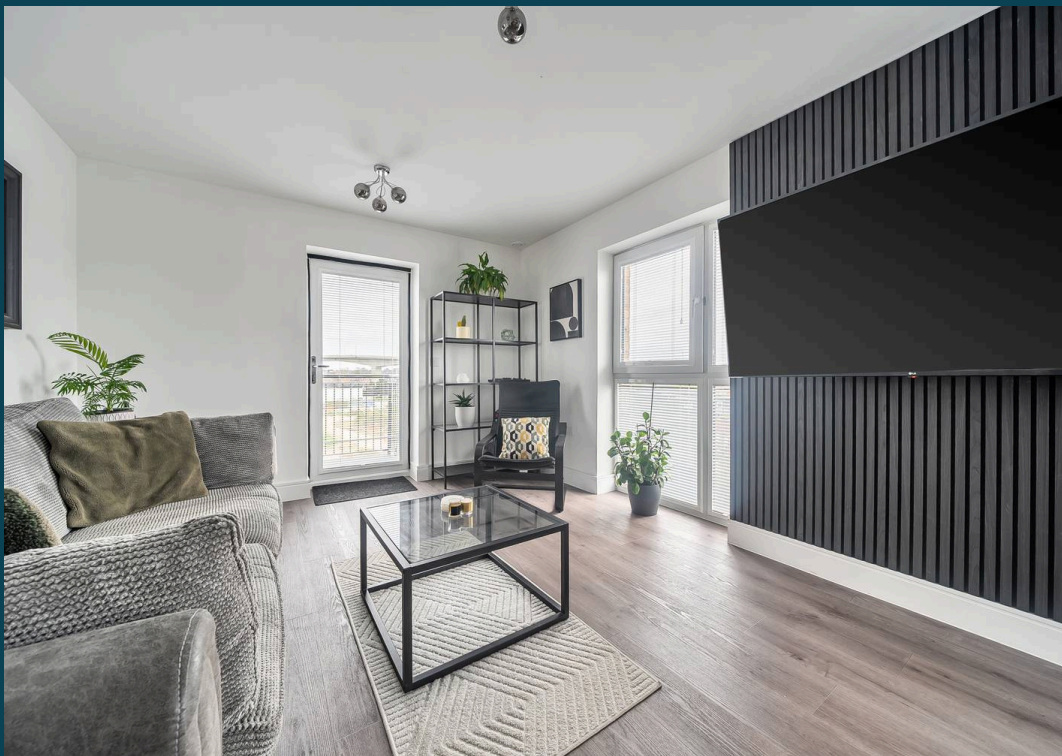
Council Tax band: C

Tenure: Leasehold

EPC Energy Efficiency Rating: B

EPC Environmental Impact Rating:

- Beautifully presented two-bedroom apartment in the desirable Elm House development
- Third-floor location with secure intercom entry and lift access
- 🚗 Allocated off-street parking for added convenience
- 🛏️ Two spacious double bedrooms, ideal for sharers, guests, or a home office setup
- 🚿 Master bedroom with stylish en-suite featuring double shower, heated towel rail, WC, and hand basin
- 🚿 Main bathroom with full-sized bath, overhead shower, heated towel rail, WC, and hand basin
- 🧱 Both bathrooms are partly tiled and finished in a light, contemporary style
- 🏠 Open-plan kitchen, lounge, and dining area—perfect for modern living and entertaining
- 🔧 Fully fitted kitchen with central island, integrated fridge-freezer, dishwasher, electric oven, hob and extractor
- 🌅 Private balcony with calming River Itchen views—a standout feature for everyday relaxation



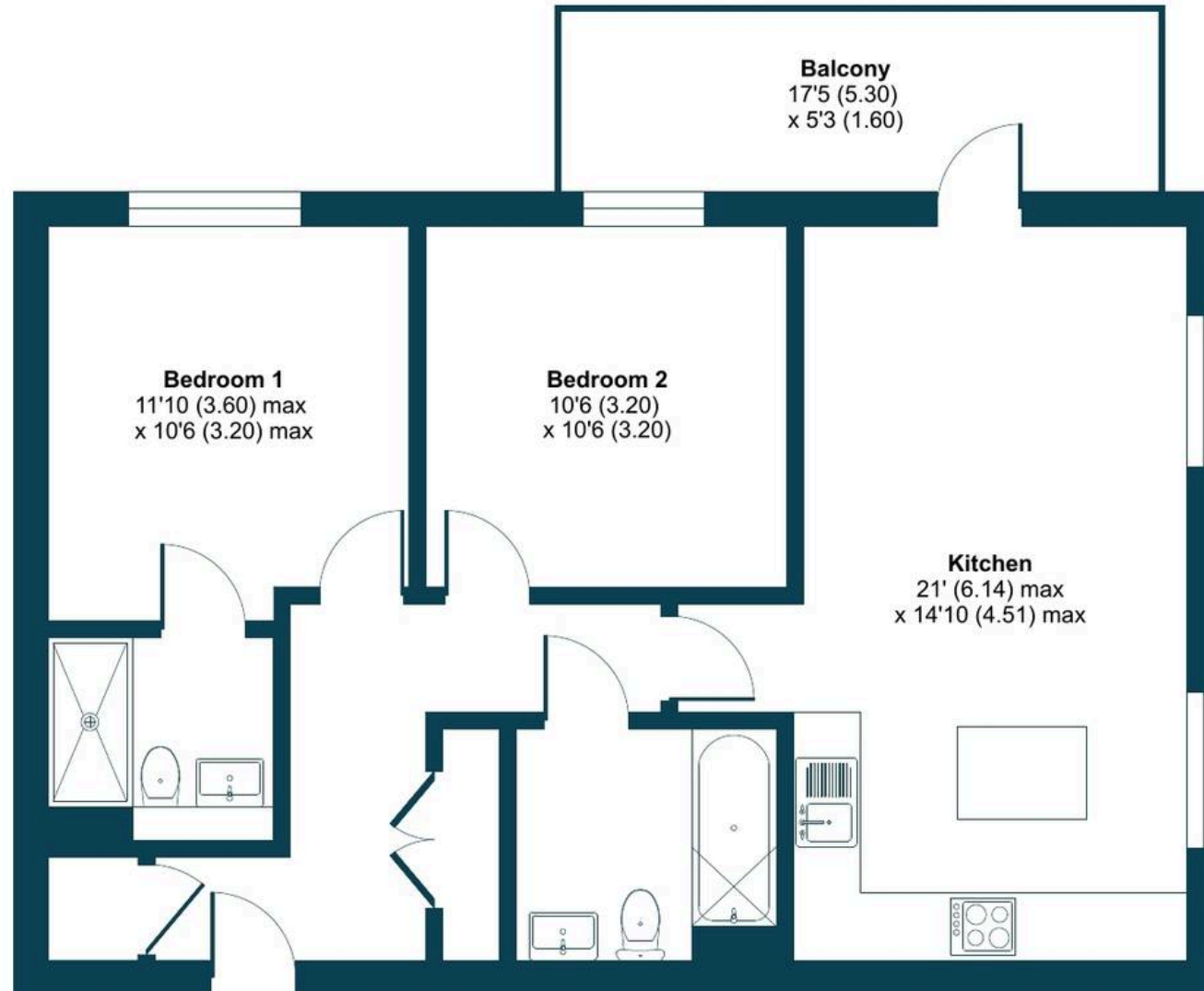




Thomas Blake Avenue, Southampton, SO14

Approximate Area = 708 sq ft / 65.7 sq m

For identification only - Not to scale

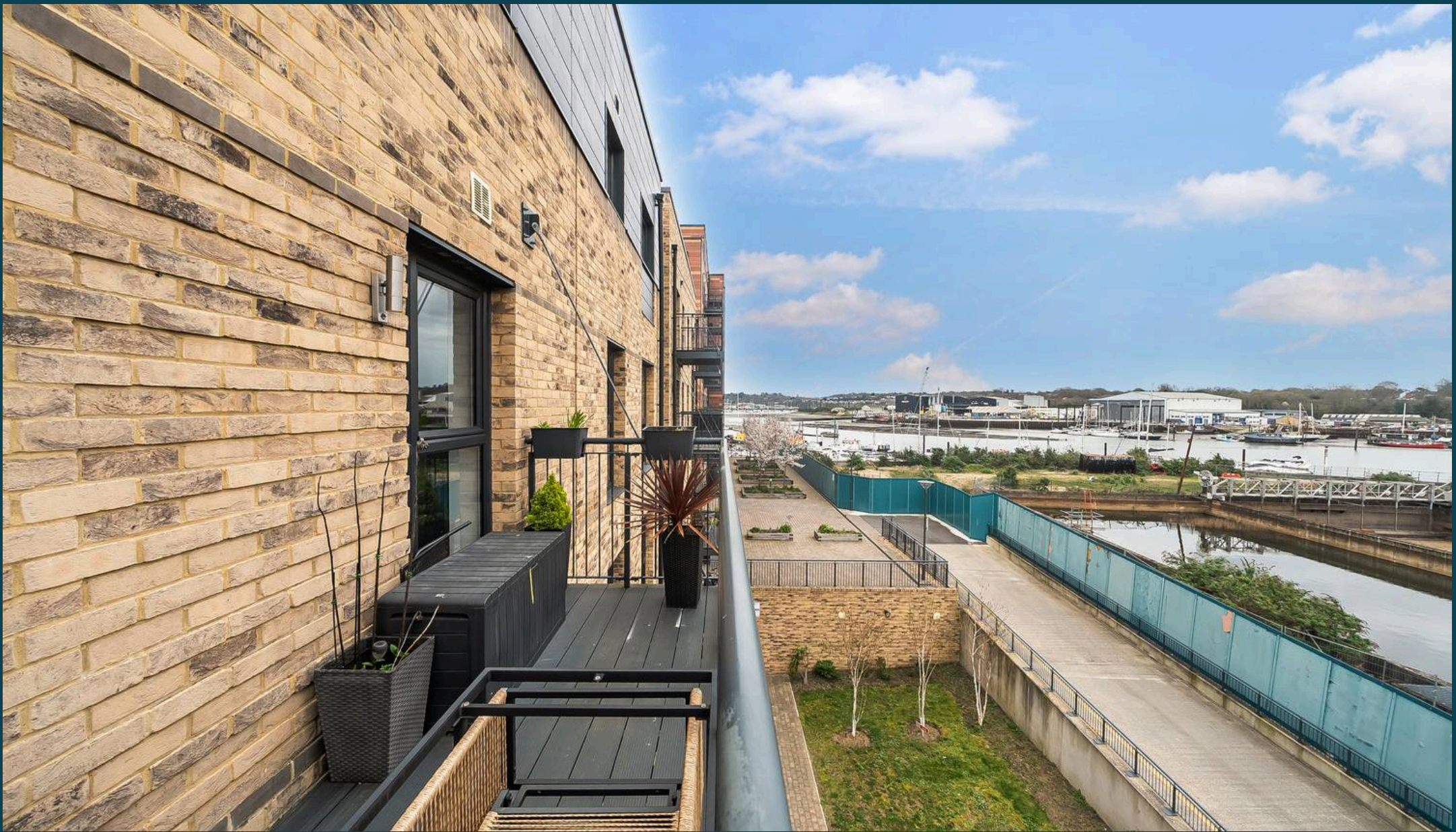


THIRD FLOOR



Floor plan produced in accordance with RICS Property Measurement 2nd Edition, Incorporating International Property Measurement Standards (IPMS2 Residential). © nichecom 2026. Produced for Nested. REF: 1437413





Nested Southampton

Fora, 9 Dallington Street, London - EC1V 0LN

023 8232 0961 • chris.schutrups@nested.com • nested.com/southampton

