



East of   
ESTATE AGENTS

Wear Barton Road  
Exeter £300,000

# Wear Barton Road

Exeter £300,000

Attractive two bedroom semi detached house situated in a highly sought after residential area on the eastern outskirts of the city of Exeter. The property features; two good size reception rooms and modern kitchen, a covered passageway to the side connects to a utility room and storage cupboards. On the first floor are two generous sized double bedrooms and modern shower room. The property has a lovely enclosed low maintenance rear garden with open aspect and large fitted summer house/workshop. Chain Free

Attractive semi-detached house | Two double bedrooms | Spacious living room and connecting dining room | Recently updated kitchen | Utility room and storage outbuildings | Modern shower room | Enclosed front garden | Generous sized low maintenance rear garden | Large fitted Summer House/Workshop | Chain Free

## DESCRIPTION:

This beautifully presented two double bedroom semi-detached home offers an exceptional balance of space, quality and character. The property has been comprehensively modernised by the current owner while retaining charming period features, resulting in a stylish yet comfortable home. Accommodation includes a living room, dining room, modern kitchen, contemporary shower room, generous storage and well-maintained gardens to both the front and rear. A standout feature is the impressive 18ft x 12ft log cabin, offering excellent versatility

The current owner has undertaken extensive modernisation, including new windows, a gas boiler, kitchen, bathroom and a new roof. These updates blend seamlessly with attractive character features, creating a home that is both practical and full of charm.

The front door opens into a welcoming hallway, where decorative glass casts beautiful rainbow reflections across the floor when sunlight shines through. The living room is a generous space with a front-facing window overlooking the garden and features a striking period fireplace with a decorative tiled hearth and cover. The cover can be removed to reveal a fully operational open fire. An opening lead through to the dining room, which benefits from large sliding doors opening directly onto the rear garden. The recently fitted kitchen offers a range of wall and base units with integrated appliances including an oven, hob, extractor and fridge, along with a rear-facing window overlooking the garden. Also on the ground floor is a useful side passageway with doors at either end, providing access to a utility room and additional storage.



To the first floor are two spacious double bedrooms and a modern shower room. The principal bedroom is a large double room with two front-facing windows and access to a substantial eaves storage cupboard. The second bedroom is also a generous double and benefits from two built-in wardrobes and a rear-facing window with views over the garden and park beyond. The shower room has been recently fitted and comprises a white suite with a walk-in shower and a rear-facing window.

### GARDENS AND GROUNDS:

Outside, the property occupies a generous plot with attractive gardens to both the front and rear. The front garden is mainly laid to lawn with planted borders and a pathway leading to the front and side access. The rear garden has been designed for low maintenance and features two decked areas with surrounding patio seating, ideal for outdoor entertaining. A central pathway leads to the impressive log cabin, currently used as an art studio and home gym, but suitable for a wide variety of uses such as a home office or hobby room. The garden also benefits from new fencing and offers potential to create a gate providing direct access to the adjoining park.

### LOCATION:

Situated in the heart of the ever-popular Countess Wear, this property represents a wonderful opportunity to acquire a spacious home within easy reach of a wide range of local amenities. The house is conveniently located within walking distance of local shops, nearby schools, supermarkets and Exeter Golf and Country Club. To the rear, the property backs directly onto a local park, providing immediate access to green space, play areas and dog-walking facilities. Plus easy access to the highly popular estuary town of Topsham with an abundance of shops and eateries. Exeter city centre is a short drive away along with a large supermarket and links to the major road network.

### AGENTS NOTES:

Tenure: Freehold

Council Tax Band: B

Council: Exeter City Council

Parking: On Street Parking

Garden: Front garden and generous sized rear garden

Electricity: Mains

Gas: Mains

Heating: Gas central heating

Water supply: Mains

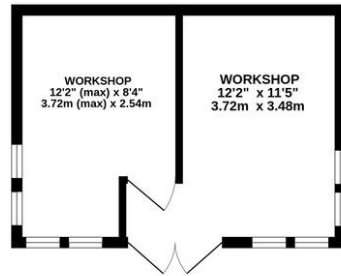
Sewerage: Mains

Broadband: Fibre to the cabinet – 76mps download and 15mps download

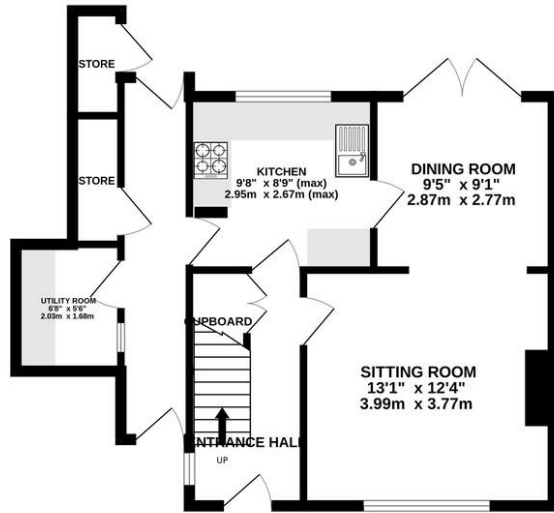
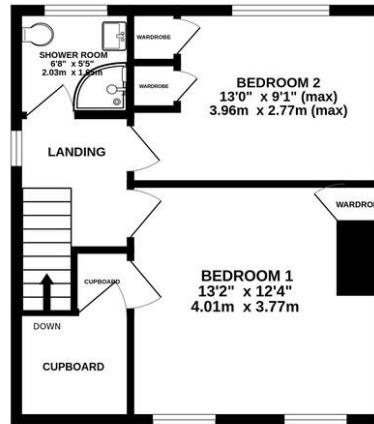
Mobile Signal: Several networks currently showing as available at the property including EE and Vodaphone



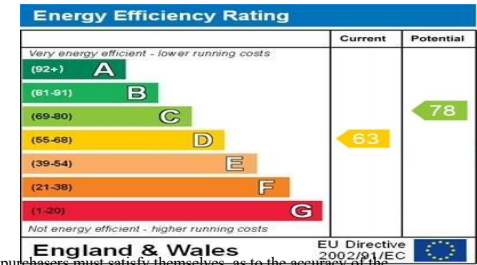
GROUND FLOOR  
746 sq.ft. (69.3 sq.m.) approx.



1ST FLOOR  
403 sq.ft. (37.4 sq.m.) approx.



TOTAL FLOOR AREA : 1149 sq.ft. (106.7 sq.m.) approx.  
Measurements are approximate. Not to scale. Illustrative purposes only  
Made with Metropix ©2026



Agents Note: Whilst every care has been taken in the preparation of these sales particulars, they are for general guidance only. All measurements, descriptions and other details are approximate and should not be relied upon as statements of fact. Prospective purchasers must satisfy themselves as to the accuracy of the information by inspection, measurement or otherwise. If inadvertently omitted or inaccurate details come to light after distribution, East and West of Exe reserves the right to withdraw, amend and reissue this brochure without notice or liability for any financial loss prior to exchange of contracts. East and West of Exe has no authority to make legal representations or warranties in relation to the property, including but not limited to boundaries, environmental matters, planning, building regulations and title matters, and cannot enter into any contract on behalf of the Vendor. All offers are subject to contract and the Vendor reserves the right to refuse any offer without giving reason. We do not accept responsibility for any expenses incurred by prospective purchasers at any stage of the transaction, in relation to properties that have been sold, let, or withdrawn. These particulars are prepared in accordance with the Consumer Protection from Unfair Trading Regulations (2008) and the Business Protection from Misleading Marketing Regulations (2008). Any material information known to the agent has been disclosed; however, buyers must make their own enquiries to confirm any details that are material to their purchasing decision.



**EXETER OFFICE**  
18 Southernhay West Exeter EX1 1PJ  
Tel: 01392 833999  
enquiries@eastofexe.co.uk  
www.eastofexe.co.uk

**EAST DEVON OFFICE**  
61 Fore Street Topsham Exeter EX3 0HL  
Tel: 01392 345070  
enquiries@eastofexe.co.uk  
www.eastofexe.co.uk

**WEST OF EXE OFFICE**  
Main Road Exminster EX6 8DB  
Tel: 01392 833999  
enquiries@westofexe.co.uk  
www.westofexe.co.uk