



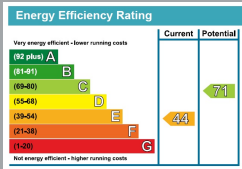
FLAT 7 STIRLING COURT, 28 MANOR ROAD
BOURNEMOUTH
Dorset, BH1 3EZ

£1,200 PCM

goadsby.com

GROUND FLOOR THREE BEDROOM CHARACTER APARTMENT LOCATED WITHIN THE EAST CLIFF

- Three Bedroom Ground Floor Apartment
- Close to Local Beaches
- Two Bathrooms
- Offered Unfurnished
- EPC Rating: Band E



Reference: 875491

Council Tax: Band C

Deposit Amount: £1,384.61

Furnishing: Unfurnished

Heating Type: Electric overnight storage heaters

Parking: None

Utilities:

- Mains Supply Electricity
- Mains Supply Gas
- Mains Supply Water - metered

Drainage: Mains Private Supply Drainage

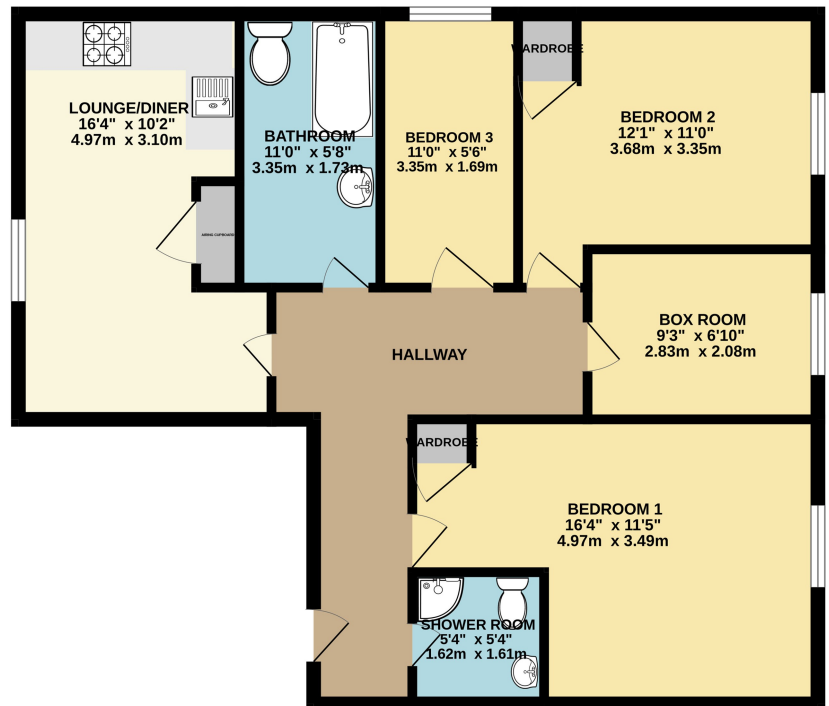
Broadband: Refer to Ofcom website
www.ofcom.org.uk/phones-and-broadband

Mobile Signal: Refer to Ofcom website
www.ofcom.org.uk/phones-and-broadband

Flood Risk: For more information refer to gov.uk, check long term flood risk
www.gov.uk/check-long-term-flood-risk

Located within the East Cliff area, close to award winning beaches and a walk from the town centre, this three bedroom ground floor flat is offered to the market unfurnished, and has two bathrooms.

GROUND FLOOR



This Floor Plan is for guidance only and is NOT to SCALE
Made with Metropix 02026

PLEASE NOTE:

Measurements quoted are approximate and for guidance only. Fixtures, fittings, services & appliances have not been tested and therefore no guarantee can be given that they are in working order. Images have been produced for information and it cannot be inferred that any item shown is included with the property. These particulars are believed to be correct but their accuracy is not guaranteed and they do not constitute an offer or form part of a contract. Solicitors are specifically requested to verify the sales particulars details in the pre-contract enquiries, in particular: price, local and other searches.

Goadsby & Harding (Residential) Ltd

Registered Office: 99 Holdenhurst Road, Bournemouth, Dorset BH8 8DY Registered in England No. 1871280

01202 544644

bournemouthlettings@goadsby.com

114 Old Christchurch Road
Bournemouth, Dorset
BH1 1LU