



**130 DONALD WOODS GARDENS  
TOLWORTH, SURBITON  
KT5 9NZ**

**£300,000**

**GROUND FLOOR FLAT**

**TWO BEDROOMS**

**16'1 X 10'2 LIVING ROOM**

**10'10 X 7'10 KITCHEN**

**DOUBLE GLAZED WINDOWS**

**ELECTRIC HEATING**

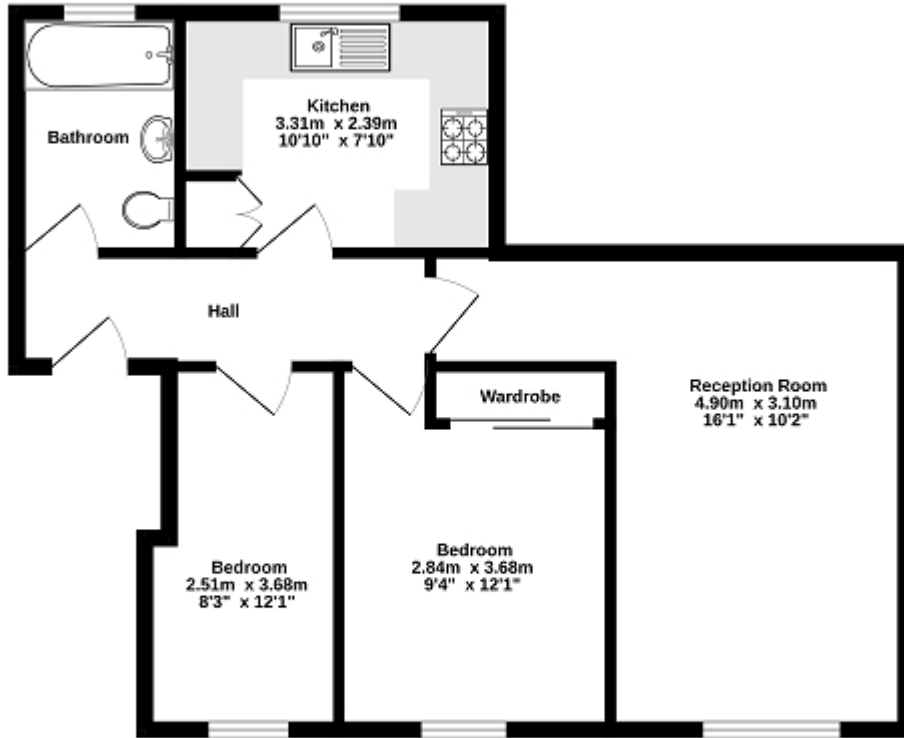
**COMMUNAL GARDENS**

**ALLOCATED PARKING**

**WELL PRESENTED**

**NO FORWARD CHAIN**

Ground Floor  
56.0 sq.m. (603 sq.ft.) approx.



Donald Wood Gardens Tolworth KT5 9NZ

TOTAL FLOOR AREA: 56.0 sq.ft. (603 sq.ft.) approx.

While every attempt has been made to ensure the accuracy of the floorplan contained here, measurements of size, width, count, and any other items are approximate and no responsibility is taken for any error, omission or mis-statement. This plan is for illustrative purposes only and should be used as such by any prospective purchaser. The services, systems and appliances shown have not been tested and no guarantee as to their capability or efficiency can be given.  
Made with Metapic ©2025

