



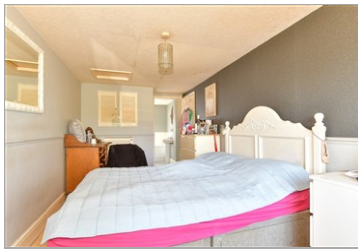
**Guide Price**  
**£375,000**

**Freehold**

4x  1x  2x 

**Linton Close, Welling,  
Kent, DA16**

*Wards*  
Helping you move forwards



## Main features

- Chain free
- In need of modernisation
- Family bathroom and en-suite bathroom
- Close to transport links
- Local shops and amenities a short walk away

## Accommodation

### GROUND FLOOR

Hallway

Lounge: 19'9 x 16'7 (6.02m x 5.06m)

Dining Area: 18'7 x 8'5 (5.67m x 2.57m)

Kitchen: 12'4 x 6'0 (3.76m x 1.83m)

Utility Room: 8'8 x 7'2 (2.64m x 2.19m)

### FIRST FLOOR

Landing

Bedroom 1: 16'4 x 8'2 (4.98m x 2.49m)

Ensuite Bathroom

Bedroom 2: 13'9 x 10'1 (4.19m x 3.08m)

Bedroom 3: 11'0 x 8'5 (3.36m x 2.57m)

Bedroom 4: 10'5 x 6'1 (3.18m x 1.86m)

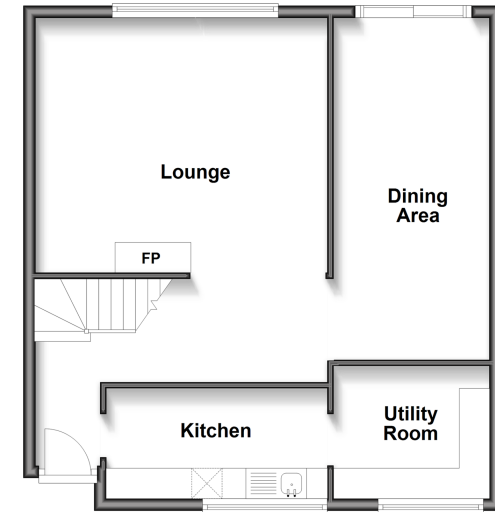
Bathroom

### OUTSIDE

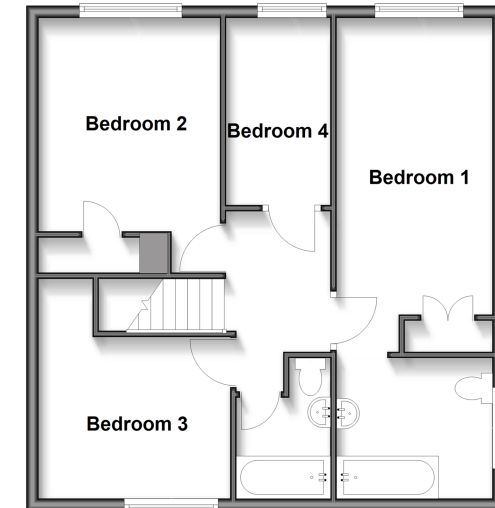
Front Garden

Rear Garden

**Ground Floor**  
Approx. 58.6 sq. metres (630.9 sq. feet)



**First Floor**  
Approx. 59.2 sq. metres (637.6 sq. feet)



9013C53J/20260414/LK/LK

Call Welling - 020 8301 6679 ■ [wardsof Kent.co.uk](http://wardsof Kent.co.uk)