



Gloucester Road, TW11

£525,000

Dexters



Gloucester Road, TW11

A rare opportunity to acquire an exceptionally well-presented, three-bedroom, top-floor apartment within a highly sought after Art Deco style building, moments from Bushy Park. Offering generous living space, far-reaching leafy views, beautiful communal gardens, parking, and a private garage, this is a superb home in a prime Teddington location.

Set back from the road and surrounded by beautiful communal gardens, this renovated top-floor apartment provides three double bedrooms. The reception room is bright with a feature fireplace and plenty of space to relax and dine. It also enjoys far-reaching leafy views. There is a modern bathroom, ample storage, and a high-specification fitted kitchen. Particular highlights include a turnkey finish, allowing a buyer to move straight into the property.

The gardens are well maintained with beautiful planting; a lovely space to enjoy entertaining with friends. There is a private garage with an allocated space to park directly in front. The property is offered to the market with no onward chain.

Ideally situated on a highly desirable residential road, this property is perfectly placed for Bushy Park, the River Thames, and Teddington High Street's excellent shops, cafés, and restaurants. Teddington Station is also within easy walking reach, providing regular services to Central London.

Features

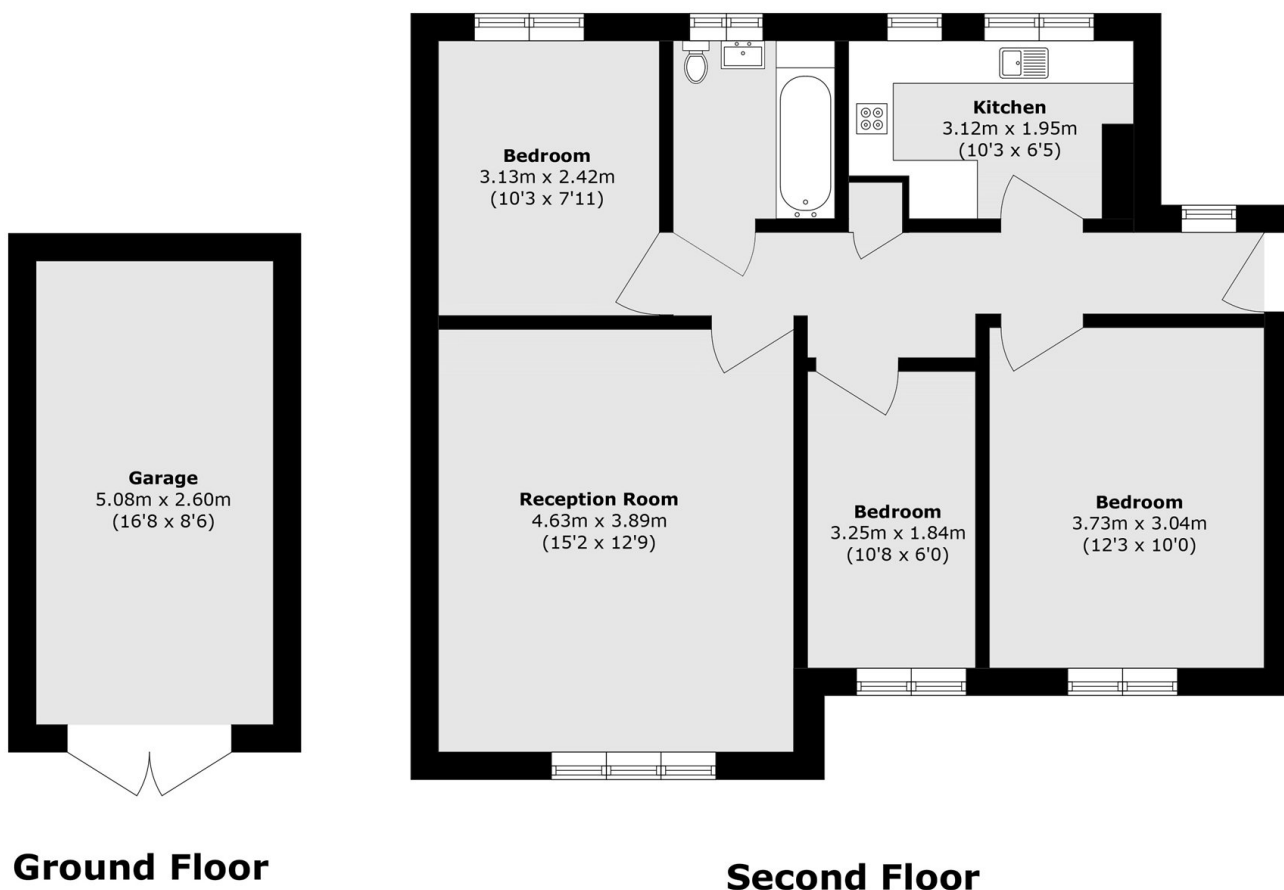
- Three Double Bedrooms
- Share of Freehold
- Excellent Location
- Communal Gardens
- Private Garage
- No Chain







Gloucester Road, Teddington, TW11



Total area (approx.): 62.6 sq. m (673.8 sq. ft)
(Excluding Garage)

Garage area (approx.): 13.2 sq. m (142.0 sq. ft)