



## Newton Avenue, N10

£875,000

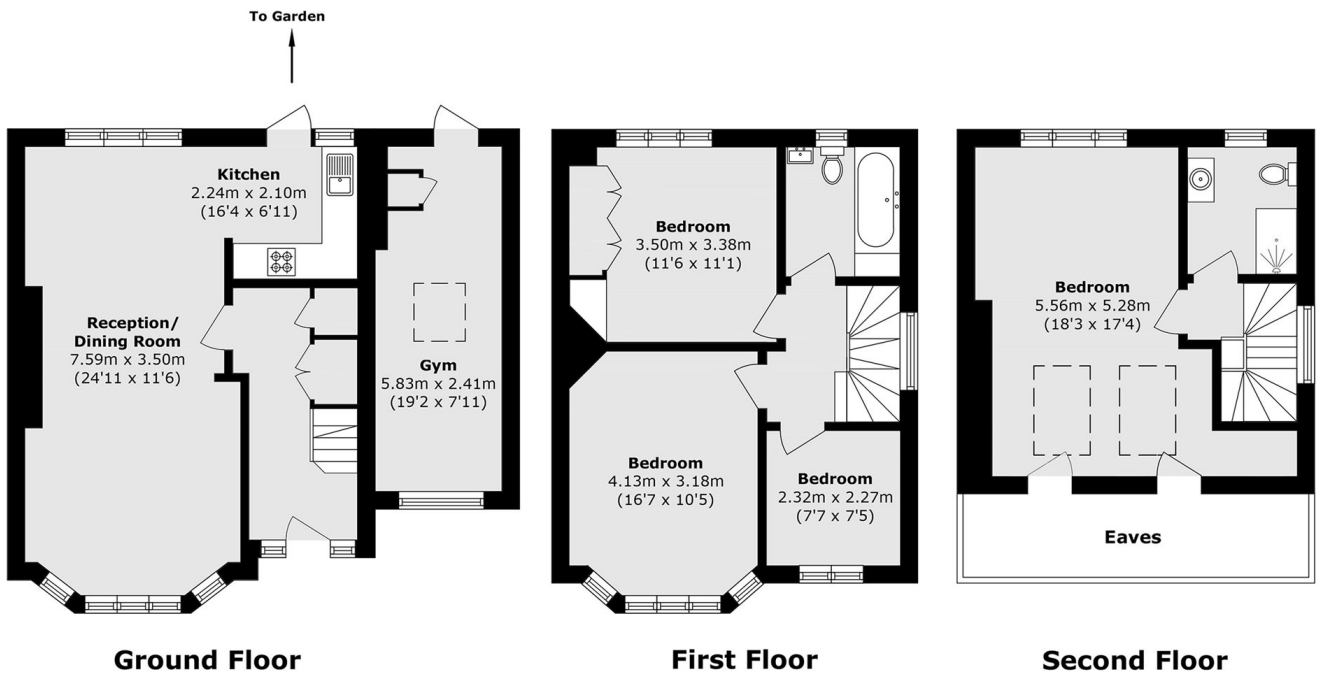
This spacious semi-detached home has four bedrooms and two bathrooms with a generously sized open plan kitchen/reception area that leads onto a well-maintained garden. The house also benefits from having ample amounts of storage space throughout and off street parking.

Situated on the northern side of Muswell Hill on a quiet residential street, this property benefits from easy access to a selection of shops and restaurants on the popular Muswell Hill Broadway. Newton Avenue is well located for outstanding school catchments.

### Features

- Double Glazing
- Off Street Parking
- Loft Conversion
- Potential To Extend (Rear)
- Semi-Detached
- Four Bedrooms

# Newton Avenue, London, N10



Total area (approx.): 110.9 sq. m (1193.7 sq. ft)  
Gym area (approx.): 14.0 sq. m (150.7 sq. ft)  
(Excluding Eaves)